

# ILS or LOC RWY 31

DEVILS LAKE RGNL (DVL)

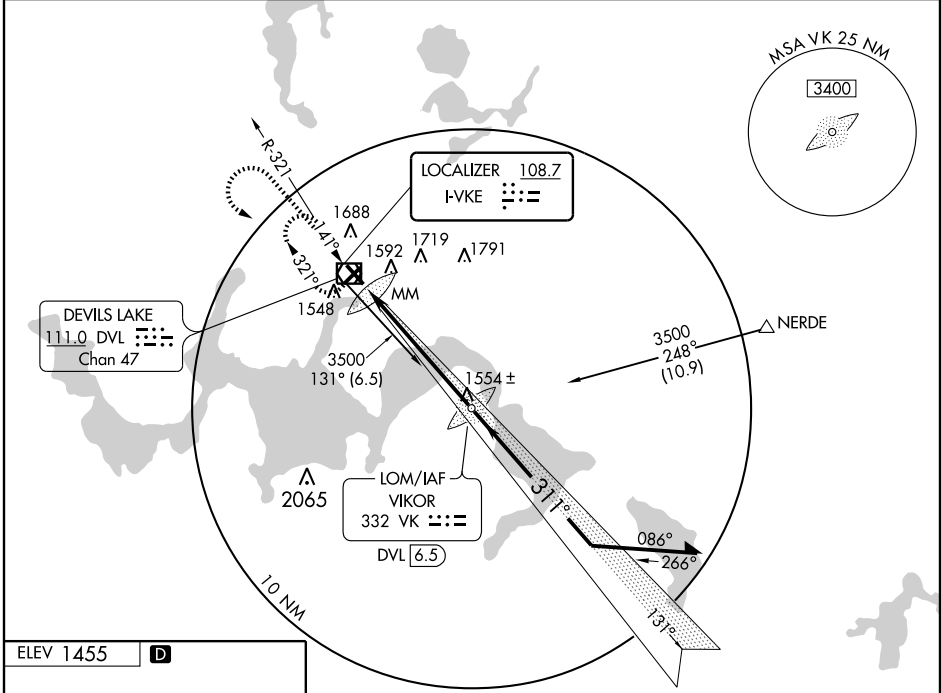
LOC I-VKE <b>108.7</b>	APP CRS <b>311°</b>	Rwy Idg 4850	TDZE 1448
		Apt Elev 1455	

**NA** Inoperative table does not apply to S-ILS 31.  
For inoperative MALSR increase S-LOC 31 Cat A, B, C visibility to 1 mile.

**MALSR**  
AS

**MISSED APPROACH:** Climb to 3500 then left turn direct DVL VOR/DME and hold.

AWOS-3 <b>125.875</b>	GRAND FORKS RADIO <b>122.3</b>	UNICOM <b>122.8 (CTAF) 0</b>
--------------------------	-----------------------------------	---------------------------------



NC-1, 22 OCT 2009 to 19 NOV 2009

NC-1, 22 OCT 2009 to 19 NOV 2009

ELEV 1455 **D**

HIRL Rwy 13-31  
REIL Rwy 13  
REIL Rwys 3 and 21  
MIRL Rwy 3-21

FAF to MAP 6 NM

Knots	60	90	120	150	180
Min:Sec	6:00	4:00	3:00	2:24	2:00

**DME OR ADF REQUIRED**

3500  
DVL 111.0  
LOM DVL 6.5  
3465  
137°  
311°  
3500  
GS 3.00°  
TCH 52

CATEGORY	A	B	C	D
S-ILS 31		1698-¾	250 (300-¾)	
S-LOC 31		1800-¾	352 (400-¾)	
CIRCLING	2000-1	545 (600-1)	2000-1½ 545 (600-1½)	2080-2 625 (700-2)