

SIDNEY, MONTANA

AL-5303 (FAA)

NDB RWY 19

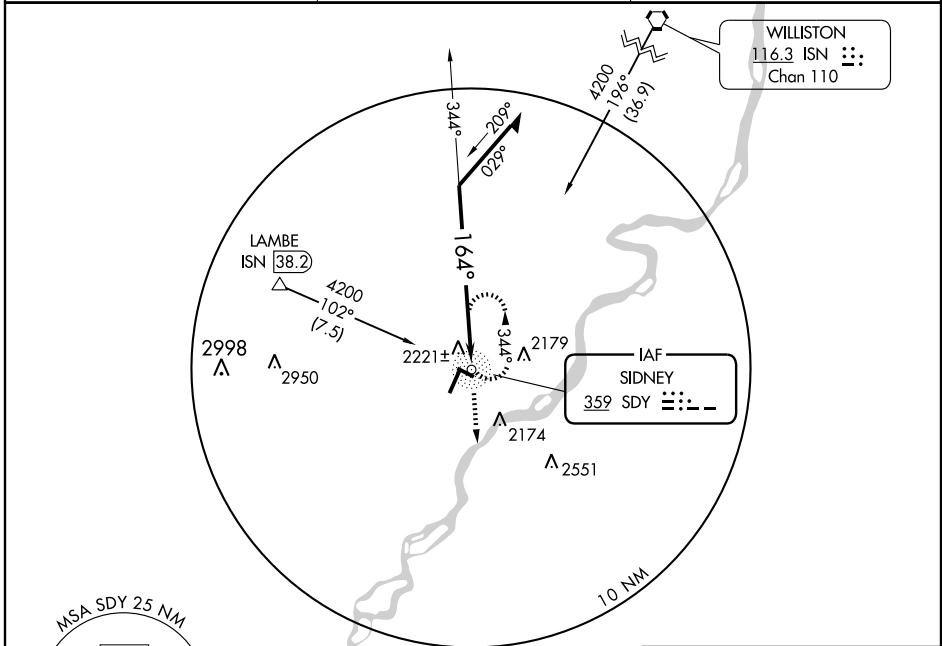
SIDNEY-RICHLAND MUNI (SDY)

NDB SDY 359	APP CRS 164°	Rwy Idg TDZE Apt Elev	5705 1979 1984
-----------------------	------------------------	-----------------------------	---

▽
▲

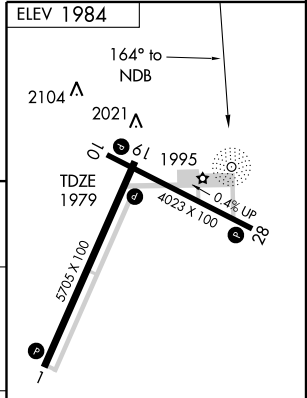
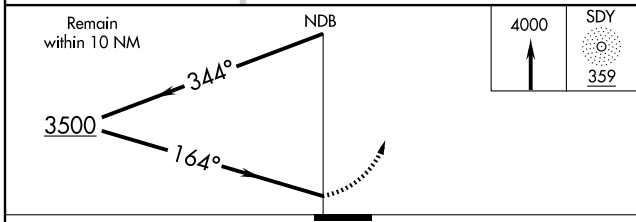
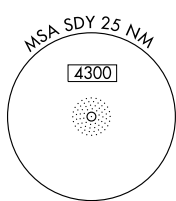
MISSED APPROACH: Climb to 4000 then direct SDY NDB and hold.

AWOS-3 119.275	GREAT FALLS RADIO 123.65	UNICOM 122.8 (CTAF) 0
--------------------------	------------------------------------	--



NW-1, 22 OCT 2009 to 19 NOV 2009

NW-1, 22 OCT 2009 to 19 NOV 2009



CATEGORY	A	B	C	D
S-19	2780-1 801 (800-1)	2780-1¼ 801 (800-1¼)	2780-2¼ 801 (800-2¼)	2780-2½ 801 (800-2½)
CIRCLING	2780-1 796 (800-1)	2780-1¼ 796 (800-1¼)	2780-2¼ 796 (800-2¼)	2780-2½ 796 (800-2½)

REIL Rwy 1, 19, 10, and 28 **0**
MIRL Rwy 1-19 and 10-28 **0**

Knots	60	90	120	150	180
Min:Sec					

SIDNEY, MONTANA
Amdt 3 08269

47°42'N-104°12'W

SIDNEY-RICHLAND MUNI (SDY)
NDB RWY 19