

MC COOK, NEBRASKA

AL-5301 (FAA)

VOR/DME MCK 115.3 Chan 100	APP CRS 294°	Rwy Idg 5699 TDZE 2558 Apt Elev 2583
--	------------------------	---

VOR RWY 30
MC COOK RGNL (MCK)

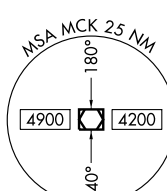
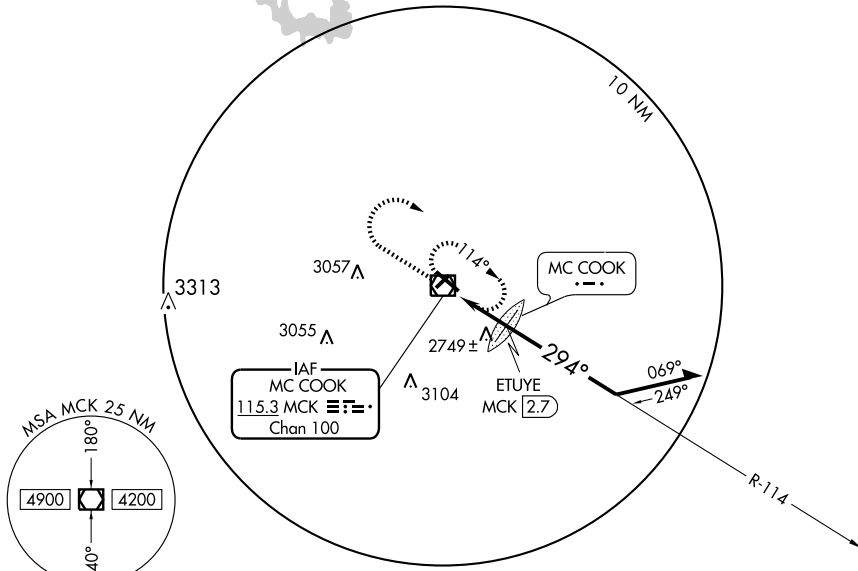
A If local altimeter setting not received, use Imperial Muni altimeter setting and increase all MDAs 220 feet. VDP NA when using Imperial Muni altimeter setting.

MISSED APPROACH: Climb to 4500 then climbing right turn to 5000 direct MCK VOR/DME and hold.

ASOS
119.025

DENVER CENTER
132.7 397.85

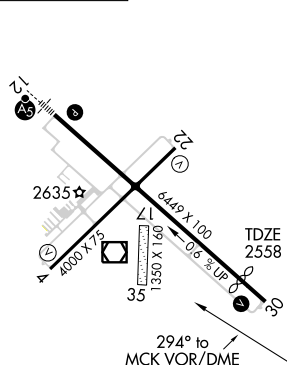
UNICOM
122.8 (CTAF)



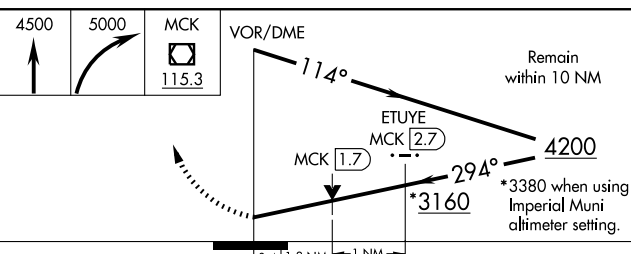
NC-2, 22 OCT 2009 to 19 NOV 2009

NC-2, 22 OCT 2009 to 19 NOV 2009

ELEV 2583 **D**



REIL Rwy 30
MIRL Rwy 4-22 and 12-30



*3380 when using Imperial Muni altimeter setting.

CATEGORY	A	B	C	D
S-30	3160-1	602 (600-1)	3160-1¾ 602 (600-1¾)	NA
CIRCLING	3160-1	577 (600-1)	3160-1¾ 577 (600-1¾)	NA
ETUYE FIX MINIMUMS (DME or FM REQUIRED)				
S-30	3000-1	442 (500-1)	3000-1¼ 442 (500-1¼)	NA
CIRCLING	3020-1 437 (500-1)	3040-1 457 (500-1)	3040-1½ 457 (500-1½)	NA

MC COOK, NEBRASKA
Amdt 11 09183

40°12'N-100°36'W

MC COOK RGNL (MCK)
VOR RWY 30