

MC COOK, NEBRASKA

AL-5301 (FAA)

VOR/DME MCK
115.3
 Chan **100**

APP CRS
210°

Rwy Idg
 TDZE **4000**
 TDZE **2565**
 Apt Elev **2580**

VOR RWY 22
 MC COOK RGNL (MCK)

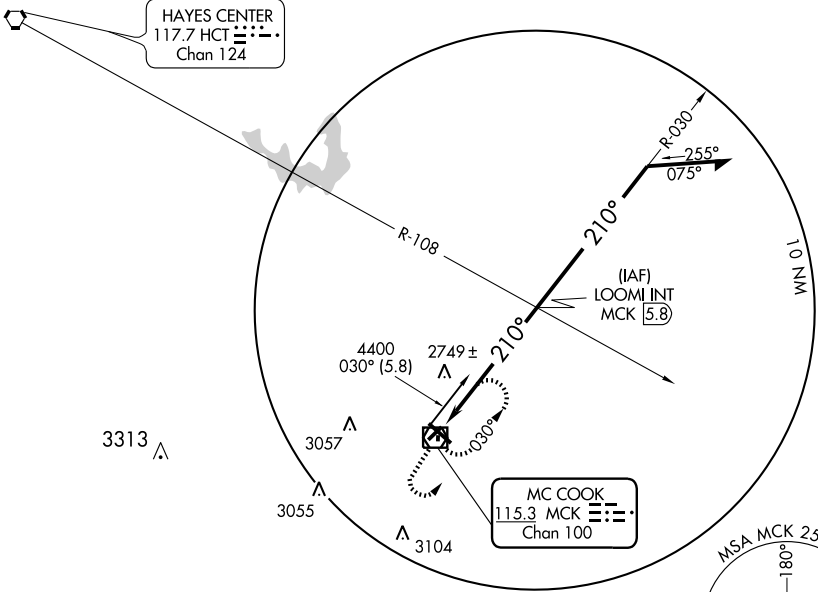
▲ NA

MISSED APPROACH: Climb to 4400 then climbing left turn to 5000 direct MCK VOR/DME and hold.

ASOS
119.025

DENVER CENTER
132.7 397.85

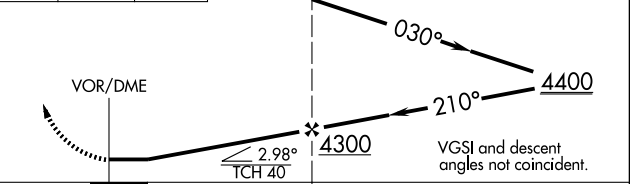
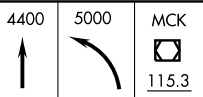
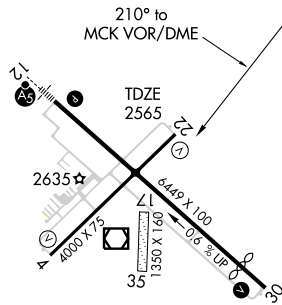
UNICOM
122.8 (CTAF) **0**



NC-2, 22 OCT 2009 to 19 NOV 2009

NC-2, 22 OCT 2009 to 19 NOV 2009

ELEV 2583 **D**



CATEGORY	A	B	C	D
S-22	3060-1	495 (500-1)	3060-1¼ 495 (500-1¼)	NA
CIRCLING	3060-1	477 (500-1)	3060-1½ 477 (500-1½)	NA

REIL Rwy 30
 MIRL Rws 4-22 and 12-30

MC COOK, NEBRASKA
 Amdt 4E 09183

40°12'N-100°36'W

MC COOK RGNL (MCK)
VOR RWY 22