

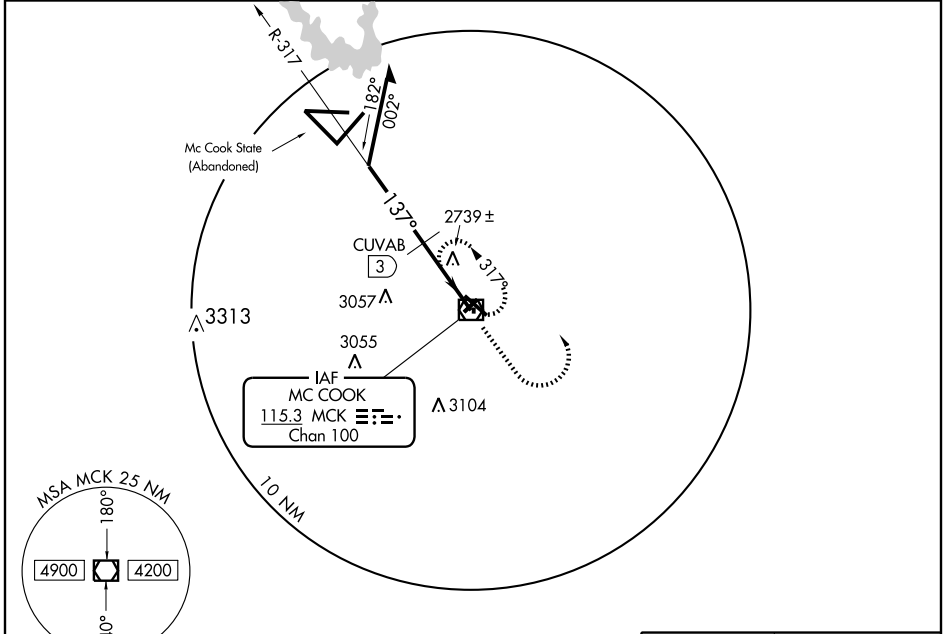
VOR/DME MCK 115.3 Chan 100	APP CRS 137°	Rwy Idg 6449 TDZE 2583 Apt Elev 2583
--	------------------------	---

VOR RWY 12
MC COOK RGNL (MCK)

▼ VDP NA when using Imperial altimeter setting. Inoperative table does not apply S-12 Cat C when using Imperial Muni altimeter setting. When local altimeter setting not received, use Imperial Muni altimeter setting and increase all MDAs 220 feet, and S-12 Cat A ¼ mile, Cat B ½ mile, Cat C 1½ mile; circling Cat A ¼ mile, Cat B ½ mile; Cat C 1 mile; CUVAB fix minimums S-12 and circling Cat C ½ mile.

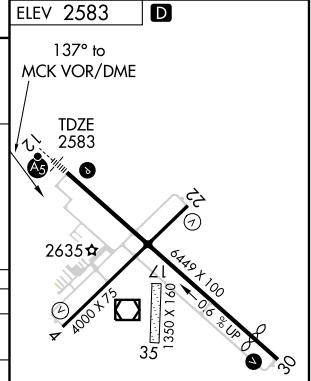
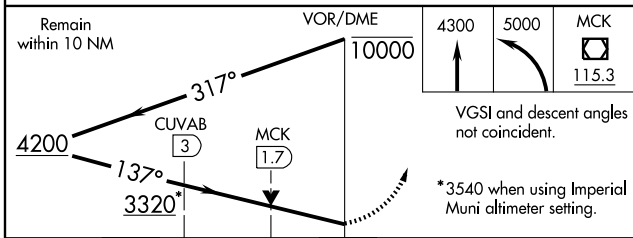
MALSR
MISSED APPROACH: Climb to 4300 then climbing left turn to 5000 direct MCK VOR/DME and hold.

ASOS 119.025	DENVER CENTER 132.7 397.85	UNICOM 122.8 (CTAF)
------------------------	--------------------------------------	-------------------------------



NC-2, 22 OCT 2009 to 19 NOV 2009

NC-2, 22 OCT 2009 to 19 NOV 2009



CATEGORY	A	B	C	D
S-12	3320-½	737 (800-½)	3320-1½ 737 (800-1½)	NA
CIRCLING	3320-1	737 (800-1)	3320-2 737 (800-2)	NA
CUVAB FIX MINIMUMS				
S-12	3000-½	417 (500-½)	3000-¾ 417 (500-¾)	NA
CIRCLING	3020-1 437 (500-1)	3040-1 457 (500-1)	3040-1½ 457 (500-1½)	NA

REIL Rwy 30
MIRL Rwy 4-22 and 12-30