

ILS or LOC/DME RWY 12

MC COOK RGNL (MCK)

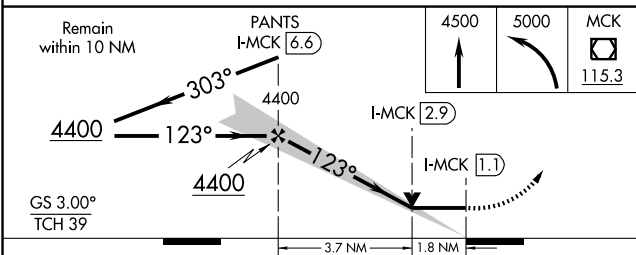
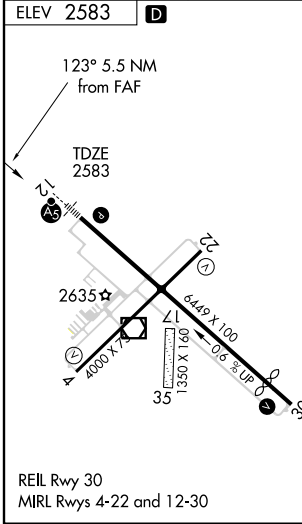
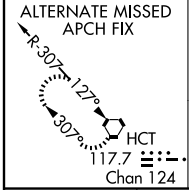
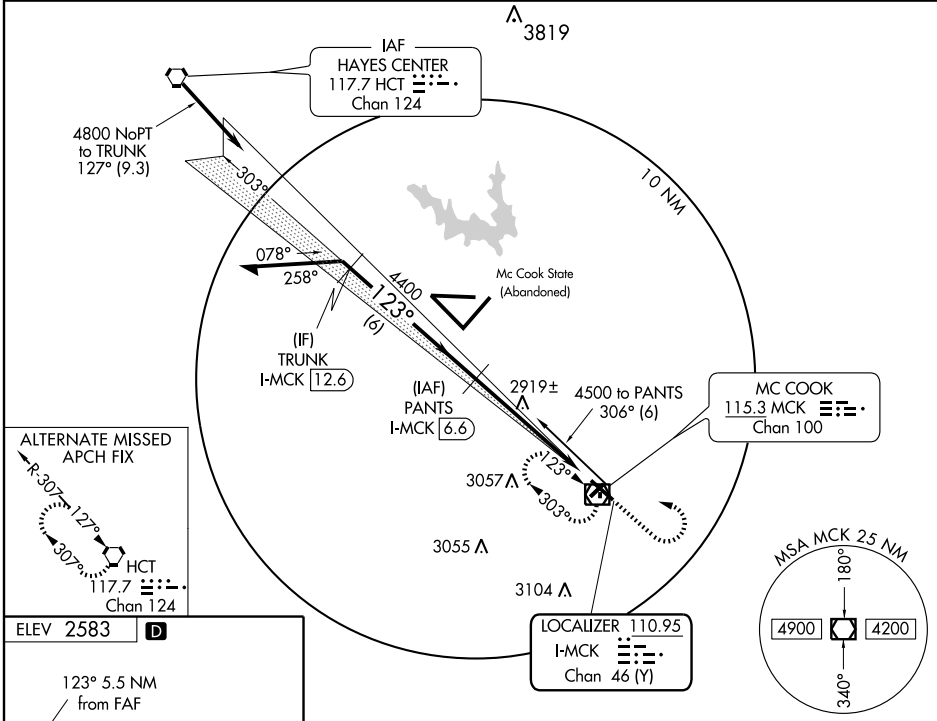
LOC/DME I-MCK 110.95 Chan 46 (Y)	APP CRS 123°	Rwy Idg 6449 TDZE 2583 Apt Elev 2583
--	------------------------	---

⚠ Circling to Rwy 22 NA at night. When local altimeter setting not received, use Imperial Muni altimeter setting and increase DA 213 feet and S-ILS 12 all visibilities ½ mile; increase all MDAs 220 feet and S-LOC 12 and circling visibilities Cats A and B ¼ mile, Cat C 1 mile. VDP NA when using Imperial Muni altimeter setting. For inoperative MALSR, when using Imperial Muni altimeter setting increase S-ILS 12 all visibilities to 1½, and S-LOC 12 Cat A visibility to 1.

MALSR
A5

MISSED APPROACH: Climb to 4500 then climbing left turn to 5000 direct MCK VOR/DME and hold.

ASOS 119.025	DENVER CENTER 132.7 397.85	UNICOM 122.8 (CTAF)
------------------------	--------------------------------------	-------------------------------



CATEGORY	A	B	C	D
S-ILS 12	2783-½ 200 (200-½)			NA
S-LOC 12	3180-½	597 (600-½)	3180-1 597 (600-1)	NA
CIRCLING	3180-1	597 (600-1)	3180-1½ 597 (600-1½)	NA

NC-2, 22 OCT 2009 to 19 NOV 2009

NC-2, 22 OCT 2009 to 19 NOV 2009