

SHELBYVILLE, TENNESSEE

AL-5299 (FAA)

VOR/DME SYI 109.0 Chan 27	APP CRS 160°	Rwy Idg 5503 TDZE 799 Apt Elev 800
---	------------------------	---

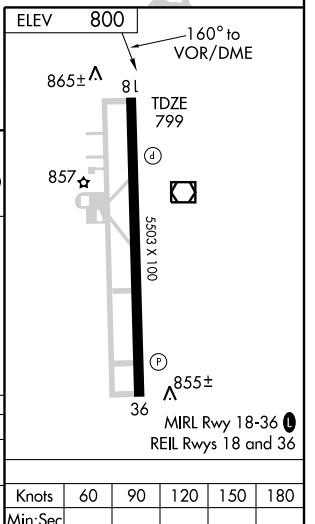
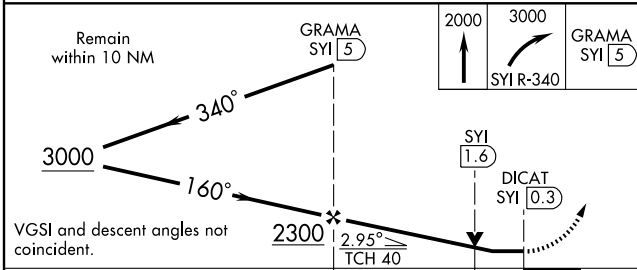
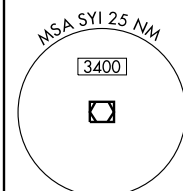
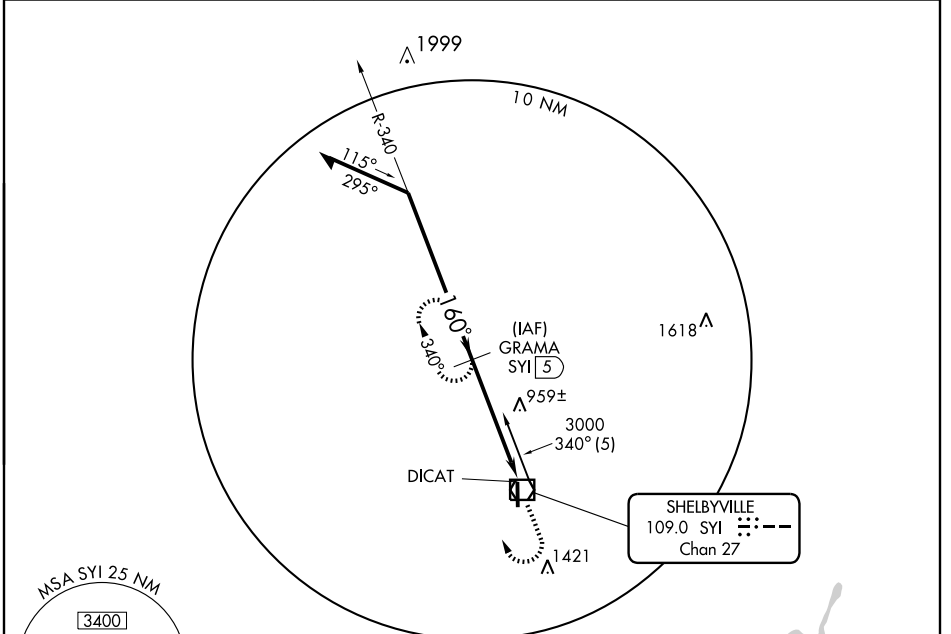
VOR/DME RWY 18

SHELBYVILLE/BOMAR FIELD-SHELBYVILLE MUNI (SYI)

⚠ If local altimeter setting not received, use Nashville Intl altimeter setting and increase all MDAs 120 feet, and increase Cat C visibility 1/4 mile, Cat D 1/2 mile.
⚠ **NA** VDP NA when using Nashville Intl altimeter setting.

MISSED APPROACH: Climb to 2000 then climbing right turn to 3000 via SYI R-340 to GRAMA/5 DME and hold.

AWOS-3 119.275	MEMPHIS CENTER 126.75 353.5	UNICOM 122.8 (CTAF) 0
--------------------------	---------------------------------------	---------------------------------



CATEGORY	A		B		C		D	
	1220-1	421 (500-1)	1220-1/4	421 (500-1/4)	1260-1	1420-1	1420-1 3/4	1440-2
S-18	1220-1	421 (500-1)	1220-1/4	421 (500-1/4)	1260-1	1420-1	1420-1 3/4	1440-2
CIRCLING	460 (500-1)	620 (700-1)	620 (700-3/4)	640 (700-2)				

Knots	60	90	120	150	180
Min:Sec					

SHELBYVILLE, TENNESSEE
Amdt 5 08045

SHELBYVILLE/BOMAR FIELD-SHELBYVILLE MUNI (SYI)
35°34'N-86°27'W

VOR/DME RWY 18

SE-1, 22 OCT 2009 to 19 NOV 2009

SE-1, 22 OCT 2009 to 19 NOV 2009