

# VOR RWY 36

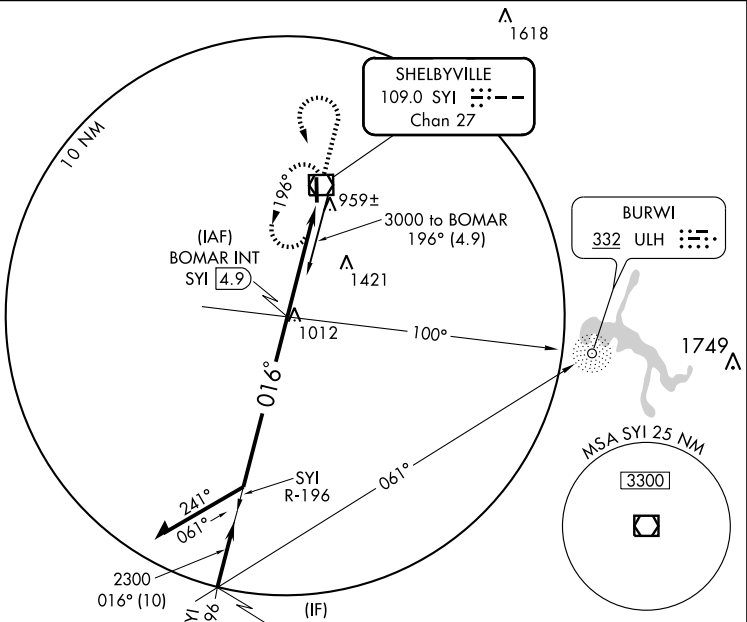
SHELBYVILLE/ BOMAR FIELD-SHELBYVILLE MUNI (SYI)

VOR/DME SYI <b>109.0</b> Chan <b>27</b>	APP CRS <b>016°</b>	Rwy Idg <b>5503</b> TDZE <b>801</b> Apt Elev <b>801</b>
---	------------------------	---

When local altimeter setting not received, use Tullohoma altimeter setting and increase all MDA 80 feet, S-36 Cat. D visibility  $\frac{1}{4}$ , and Circling Cat. C and D visibility  $\frac{1}{2}$ . VDP NA when using Tullohoma altimeter setting.  
ADF or DME Required.

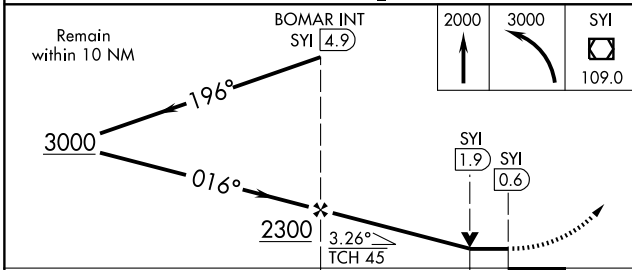
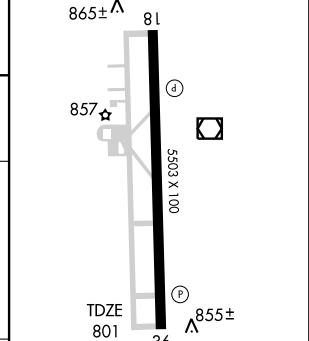
MISSED APPROACH: Climb to 2000 then climbing left turn to 3000 direct SYI VOR/DME and hold.

AWOS-3 <b>119.275</b>	MEMPHIS CENTER <b>126.75 353.5</b>	UNICOM <b>122.8 (CTAF)</b>
--------------------------	---------------------------------------	-------------------------------



IAF  
ROCKET  
**112.2** RQZ  
Chan 59

ELEV 801 MIRL Rwy 18-36  
REIL Rwy 18 and 36



CATEGORY	A	B	C	D
S-36	1220-1	419 (500-1)	1220-1 $\frac{1}{4}$	419 (500-1 $\frac{1}{4}$ )
CIRCLING	1260-1 459 (500-1)	1420-1 619 (700-1)	1420-1 $\frac{3}{4}$ 619 (700-1 $\frac{3}{4}$ )	1440-2 639 (700-2)

FAF to MAP 4.2 NM					
Knots	60	90	120	150	180
Min:Seq	4:12	2:48	2:06	1:41	1:24

# VOR RWY 36

SE-1, 22 OCT 2009 to 19 NOV 2009

SE-1, 22 OCT 2009 to 19 NOV 2009