

SHELBYVILLE, TENNESSEE

AL-5299 (FAA)

# RNAV (GPS) Y RWY 36

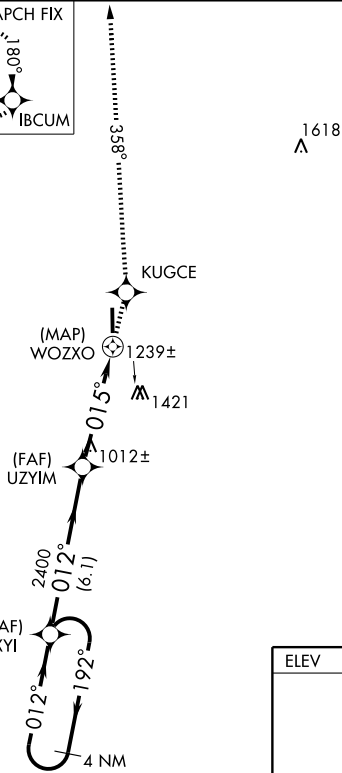
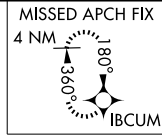
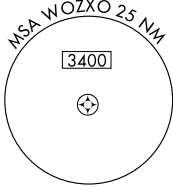
SHELBYVILLE/BOMAR FIELD-SHELBYVILLE MUNI (SYI)

APP CRS	Rwy Idg	<b>5503</b>
<b>015°</b>	TDZE	<b>801</b>
	Apt Elev	<b>801</b>

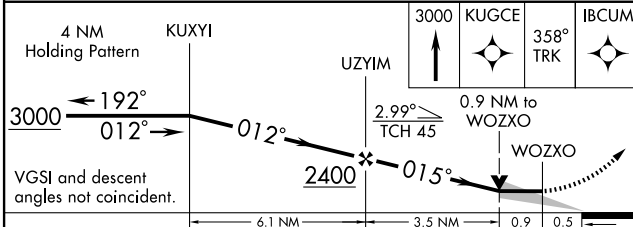
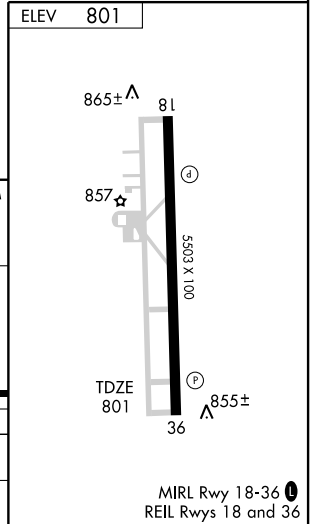
**⚠** When local altimeter setting not received, use Tullahoma altimeter setting and increase all MDA 80 feet, and increase LNAV Cat. C/D visibility and Circling Cat. C/D visibility ¼ mile. DME/DME RNP-0.3 NA.

**MISSED APPROACH:** Climb to 3000 direct KUGCE and via 358° track to IBCUM and hold.

AWOS-3 <b>119.275</b>	MEMPHIS CENTER <b>126.75 353.5</b>	UNICOM <b>122.8 (CTAF) 0</b>
--------------------------	---------------------------------------	---------------------------------



NoPT for arrival at KUXYI via V321 Northbound.



CATEGORY	A	B	C	D
LNAV MDA	1260-1	459 (500-1)	1260-1¼	459 (500-1¼)
CIRCLING	1260-1 459 (500-1)	1420-1 619 (700-1)	1420-1¾ 619 (700-1¾)	1440-2 639 (700-2)

MIRL Rwy 18-36 0  
REIL Rwy 18 and 36

SE-1, 22 OCT 2009 to 19 NOV 2009

SE-1, 22 OCT 2009 to 19 NOV 2009

SHELBYVILLE, TENNESSEE  
Orig-A 08297

SHELBYVILLE/BOMAR FIELD-SHELBYVILLE MUNI (SYI)  
35° 34'N-86° 27'W

# RNAV (GPS) Y RWY 36