

# RNAV (GPS) RWY 18

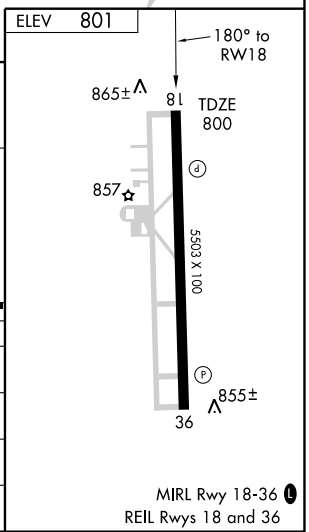
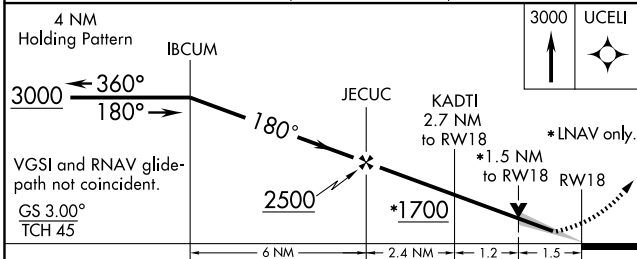
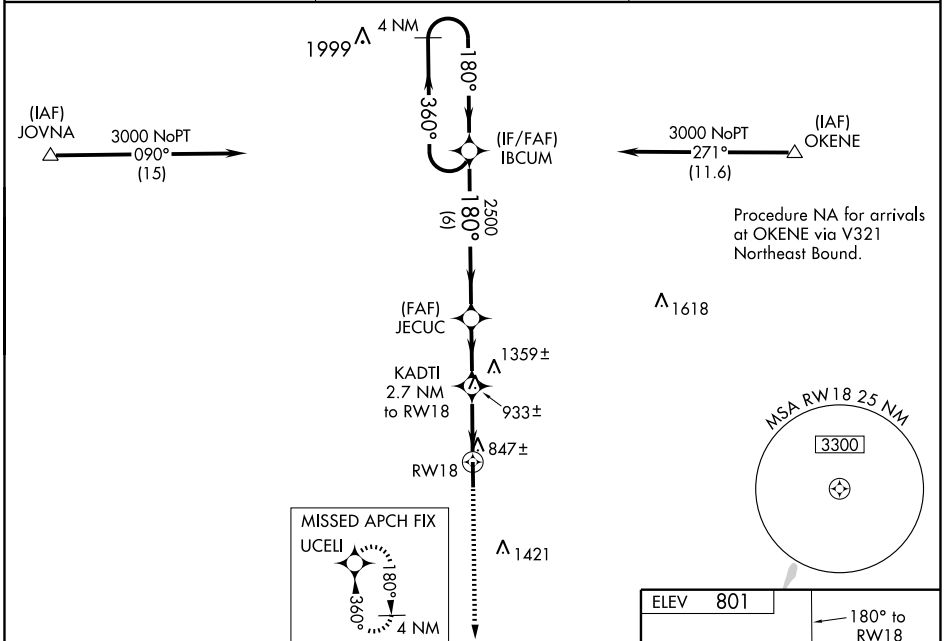
SHELBYVILLE/ BOMAR FIELD-SHELBYVILLE MUNI (SYI)

WAAS CH <b>50407</b> <b>W18A</b>	APP CRS <b>180°</b>	Rwy Idg TDZE Apt Elev	<b>5503</b> <b>800</b> <b>801</b>
--	------------------------	-----------------------------	---

When local altimeter setting not received, use Tullahoma altimeter setting and increase LPV DA to 1123, LNAV/VNAV DA to 1389, all MDA 80 feet, increase LPV all Cats. visibility 1/2 mile, LNAV/VNAV all Cats. visibility 1/4 mile, LNAV and Circling Cat. C and D visibility 1/4 mile. Baro-VNAV NA when using Tullahoma altimeter setting. For uncompensated Baro-VNAV systems, LNAV/VNAV NA below -16° C (4°F) or above 47° C (116° F). DME/DME RNP-0.3 NA. VDP NA when using Tullahoma altimeter setting.

**MISSED APPROACH:**  
Climb to 3000 direct UCELI and hold.

AWOS-3 <b>119.275</b>	MEMPHIS CENTER <b>126.75 353.5</b>	UNICOM <b>122.8 (CTAF) 0</b>
--------------------------	---------------------------------------	---------------------------------



CATEGORY	A	B	C	D
LPV DA	1050-3/4		250 (300-3/4)	
LNAV/VNAV DA	1316-13/4		516 (600-13/4)	
LNAV MDA	1280-1	480 (500-1)	1280-1 1/4 480 (500-1 1/4)	1280-1 1/2 480 (500-1 1/2)
CIRCLING	1280-1 479 (500-1)	1420-1 619 (700-1)	1420-1 3/4 619 (700-1 3/4)	1440-2 639 (700-2)

MIRL Rwy 18-36 0  
REIL Rwy 18 and 36

SE-1, 22 OCT 2009 to 19 NOV 2009

SE-1, 22 OCT 2009 to 19 NOV 2009