

PARK RAPIDS, MINNESOTA

AL-5298 (FAA)

VOR RWY 31

PARK RAPIDS MUNI-KONSHOK FIELD (PKD)

VOR/DME PKD 110.6 Chan 43	APP CRS 306°	Rwy Idg TDZE 1443 Apt Elev 1443
--	------------------------	---

For inoperative MALSR, increase Cat. D S-31. DME minimums visibility ¼ mile.

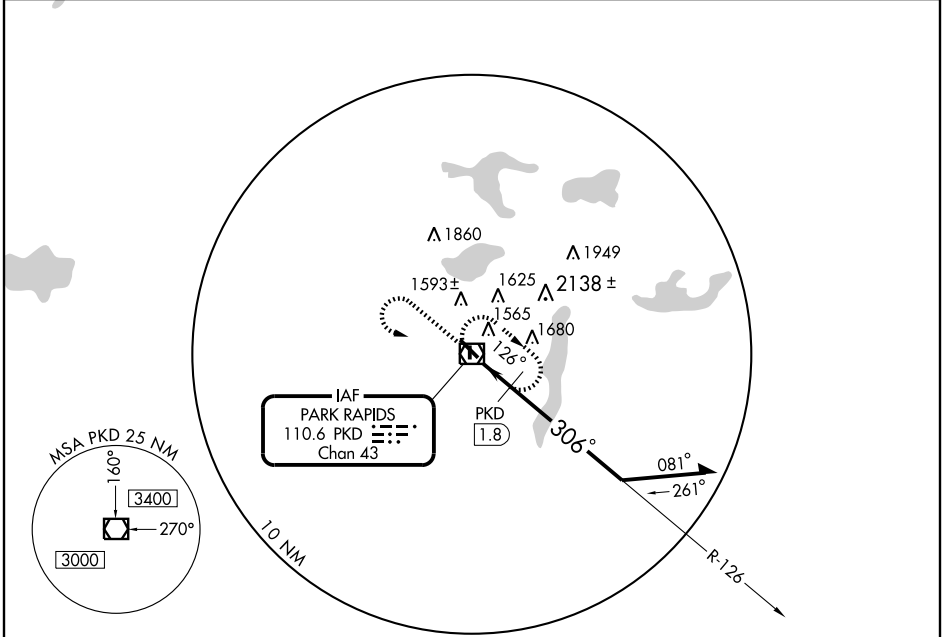


MISSED APPROACH: Climb to 3200, then left turn direct PKD VOR/DME and hold.

ASOS
110.6

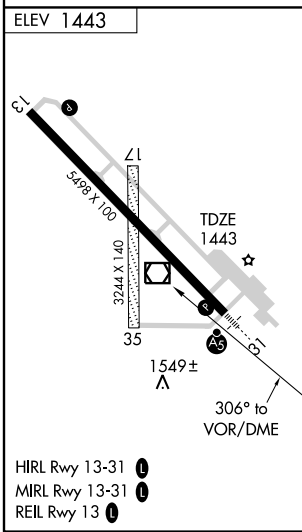
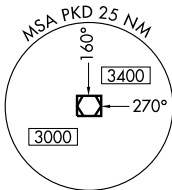
PRINCETON RADIO
122.1R

UNICOM
123.0 (CTAF) **1**

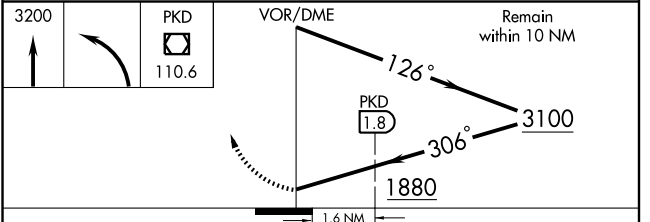


NC-1, 22 OCT 2009 to 19 NOV 2009

NC-1, 22 OCT 2009 to 19 NOV 2009



- HIRL Rwy 13-31 **1**
- MIRL Rwy 13-31 **1**
- REIL Rwy 13 **1**



CATEGORY	A	B	C	D
S-31	1880-½	437 (500-½)	1880-¾ 437 (500-¾)	1800-1 437 (500-1)
CIRCLING	1920-1	477 (500-1)	1920-1½ 477 (500-1½)	2000-2 557 (600-2)
DME MINIMUMS				
S-31	1820-½		377 (400-½)	1820-1 377 (400-1)
CIRCLING	1920-1	477 (500-1)	1920-1½ 477 (500-1½)	2000-2 557 (600-2)

PARK RAPIDS, MINNESOTA
Amdt 13A 09127

PARK RAPIDS MUNI-KONSHOK FIELD (PKD)

46°54'N - 95°04'W

VOR RWY 31