

PARK RAPIDS, MINNESOTA

AL-5298 (FAA)

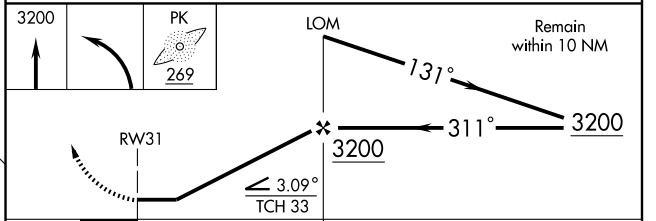
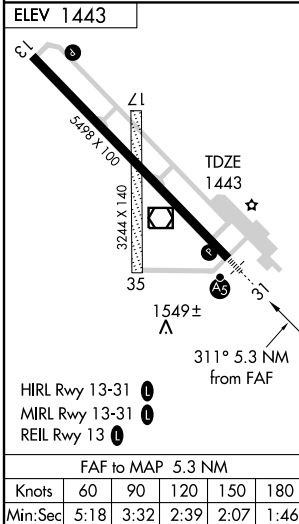
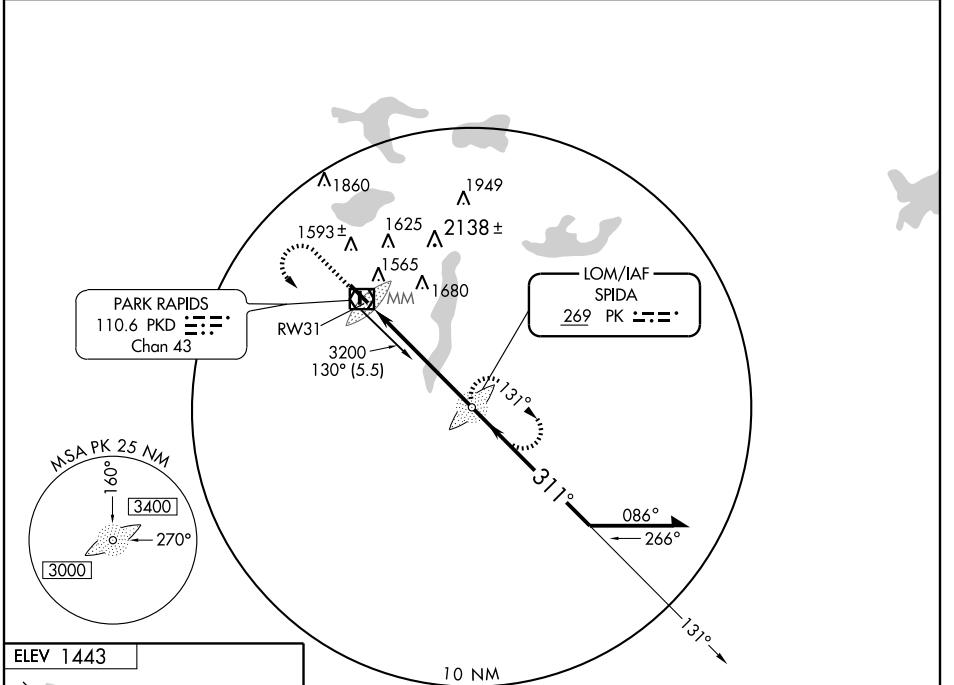
NDB or GPS RWY 31

PARK RAPIDS MUNI-KONSHOK FIELD (PKD)

LOM PK 269	APP CRS 311°	Rwy Idg TDZE Apt Elev	5498 1443 1443
----------------------	------------------------	-----------------------------	---

NA	MALSR AS5	MISSED APPROACH: Climb to 3200, then left turn direct PK LOM and hold.

ASOS 110.6	PRINCETON RADIO 122.1R	UNICOM 123.0 (CTAF)
----------------------	----------------------------------	-------------------------------



CATEGORY	A	B	C	D
S-31	1860-¾ 417 (500-¾)		1860-1 417 (500-1)	
CIRCLING	1920-1 477 (500-1)		1920-1½ 477 (500-1½) 2000-2 557 (600-2)	

PARK RAPIDS, MINNESOTA
Amdt 1B 09127

46°54'N - 95°04'W

PARK RAPIDS MUNI-KONSHOK FIELD (PKD)
NDB or GPS RWY 31

NC-1, 22 OCT 2009 to 19 NOV 2009

NC-1, 22 OCT 2009 to 19 NOV 2009