

PARK RAPIDS, MINNESOTA

AL-5298 (FAA)

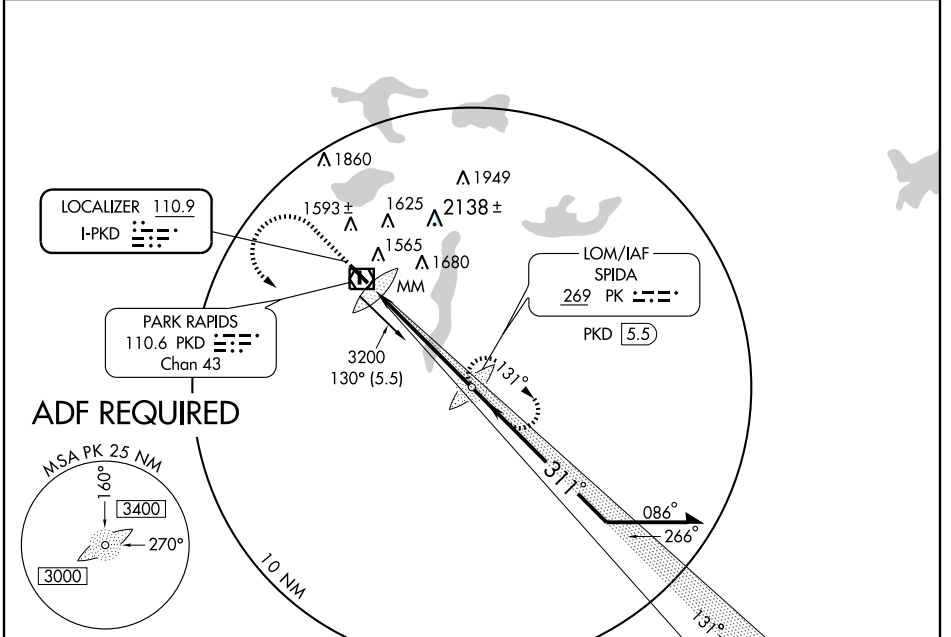
# ILS RWY 31

PARK RAPIDS MUNI-KONSHOK FIELD (PKD)

LOC I-PKD <b>110.9</b>	APP CRS <b>311°</b>	Rwy Idg TDZE Apt Elev	<b>5498</b> <b>1443</b> <b>1443</b>
---------------------------	------------------------	-----------------------------	---

▲ NA	MALSR 	MISSED APPROACH: Climb to 3200 then left turn direct Spida LOM and hold.

ASOS <b>110.6</b>	PRINCETON RADIO <b>122.1R</b>	UNICOM <b>123.0</b> (CTAF) <b>1</b>
----------------------	----------------------------------	--



NC-1, 22 OCT 2009 to 19 NOV 2009

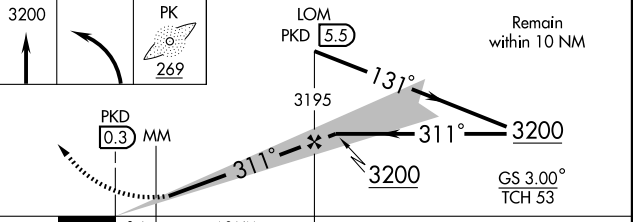
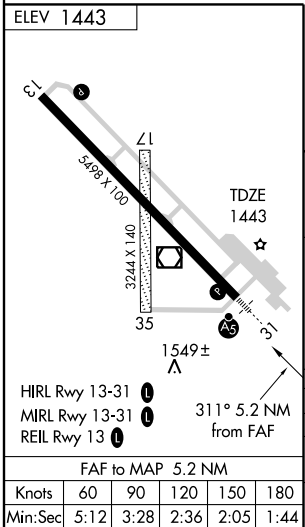
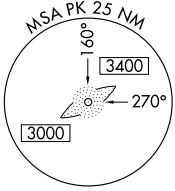
NC-1, 22 OCT 2009 to 19 NOV 2009

LOCALIZER 110.9  
I-PKD

PARK RAPIDS  
110.6 PKD   
Chan 43

LOM/IAF  
SPIDA  
269° PK   
PKD 5.5

**ADF REQUIRED**



CATEGORY	A	B	C	D
S-ILS 31	1643-1/2 200 (200-1/2)			
S-LOC 31	1800-1/2 357 (400-1/2)			1800-3/4 357 (400-3/4)
CIRCLING	1920-1 477 (500-1)		1920-1/2 477 (500-1/2) 2000-2 557 (600-2)	

PARK RAPIDS, MINNESOTA  
Amdt 1A 09127

46°54'N - 95°04'W

PARK RAPIDS MUNI-KONSHOK FIELD (PKD)

# ILS RWY 31