

# RNAV (GPS) RWY 30

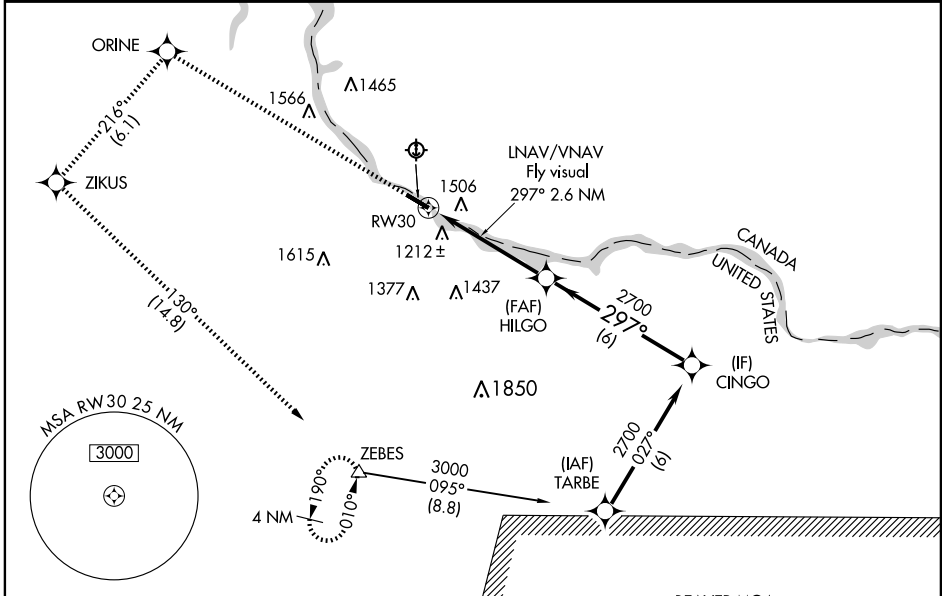
BAUDETTE INTL (BDE)

WAAS CH <b>81814</b> <b>W30A</b>	APP CRS <b>297°</b>	Rwy Idg TDZE Apt Elev	<b>5499</b> <b>1085</b> <b>1086</b>
--	------------------------	-----------------------------	---

**⚠** Circling NA northeast of Rwy 12-30.  
DME/DME RNP-0.3 NA.  
If local altimeter setting not received, use Warrroad altimeter setting and increase all DAs/MDAs 80 feet.  
Baro-VNAV NA below -17°C (2F°).  
Baro-VNAV and VDP NA when using Warrroad altimeter setting.

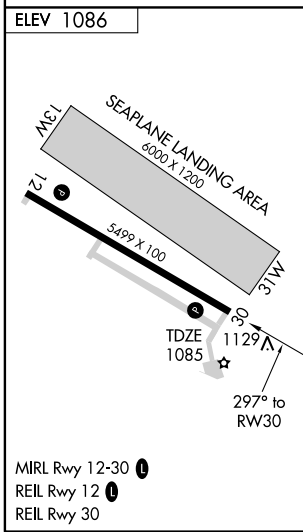
**MISSED APPROACH:** Climb to 3000 direct ORINE and via 216° track to ZIKUS and via 129° track to ZEBES and hold.

ASOS <b>126.775</b>	PRINCETON RADIO <b>122.4</b>	UNICOM <b>122.8 (CTAF) 0</b>
------------------------	---------------------------------	---------------------------------



NC-1, 22 OCT 2009 to 19 NOV 2009

NC-1, 22 OCT 2009 to 19 NOV 2009



3000	ORINE	216° track	ZIKUS	129° track	ZEBES	HILGO	Procedure Turn NA	CINGO
	LNNAV/VNAV Fly visual 297° 2.6 NM		*2.2 NM to RW30				297°	2700
	RW30		*LNNAV only				2700	GS 3.00° TCH 51
	-2.2 NM		-2.7 NM		-6 NM			
CATEGORY	A		B		C		D	
LPV DA			1360-1		275 (300-1)			
LNNAV/VNAV DA	1960-2	875 (900-2)		1960-2½ 875 (900-2½)		1960-2¾ 875 (900-2¾)		
LNNAV MDA	1820-1	735 (800-1)		1820-2 735 (800-2)		1820-2¼ 735 (800-2¼)		
CIRCLING			1960-3		874 (900-3)			