

COLUMBUS, NEBRASKA

AL-5291 (FAA)

VOR/DME OLU 111.8 Chan 55	APP CRS 330°	Rwy Idg TDZE Apt Elev	5850 1442 1447
--	------------------------	-----------------------------	---

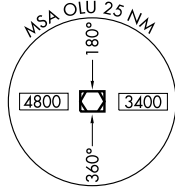
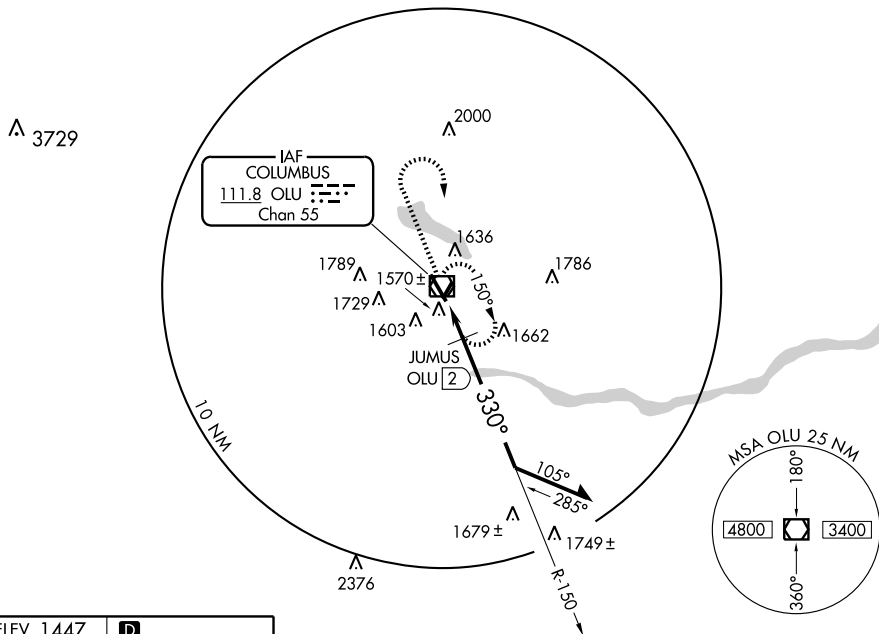
VOR RWY 32
COLUMBUS MUNI (OLU)

MISSED APPROACH: Climb to 3500 then right turn direct OLU VOR/DME and hold.

AWOS-3
125.525

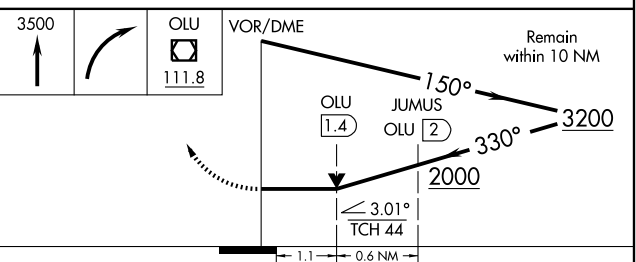
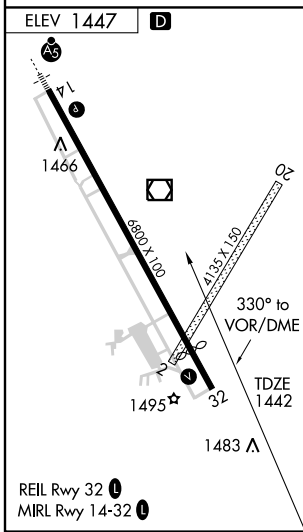
MINNEAPOLIS CENTER
128.75 346.3

UNICOM
123.05 (CTAF)



NC-2, 22 OCT 2009 to 19 NOV 2009

NC-2, 22 OCT 2009 to 19 NOV 2009



CATEGORY	A	B	C	D
S-32	2000-1	558 (600-1)	2000-1½ 558 (600-1½)	2000-1¾ 558 (600-1¾)
CIRCLING	2000-1	553 (600-1)	2000-1½ 553 (600-1½)	2040-2 593 (600-2)
JUMUS DME MINIMUMS				
S-32	1820-1 378 (400-1)			1820-1¼ 378 (400-1¼)
CIRCLING	1940-1	493 (500-1)	1940-1½ 493 (500-1½)	2040-2 593 (600-2)

COLUMBUS, NEBRASKA
Amdt 14 08325

41°27'N - 97°21' W

COLUMBUS MUNI (OLU)
VOR RWY 32