

COLUMBUS, NEBRASKA

AL-5291 (FAA)

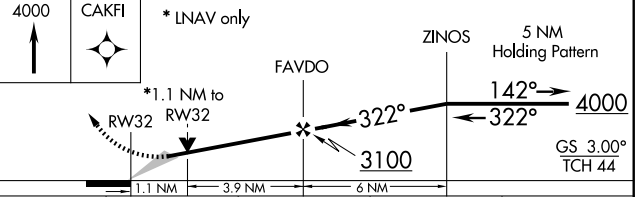
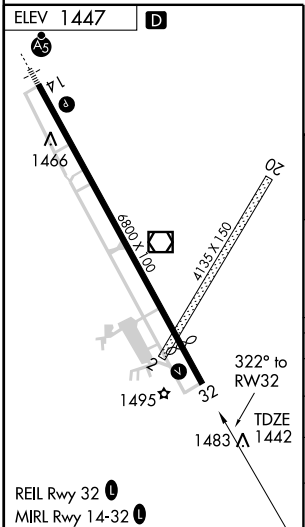
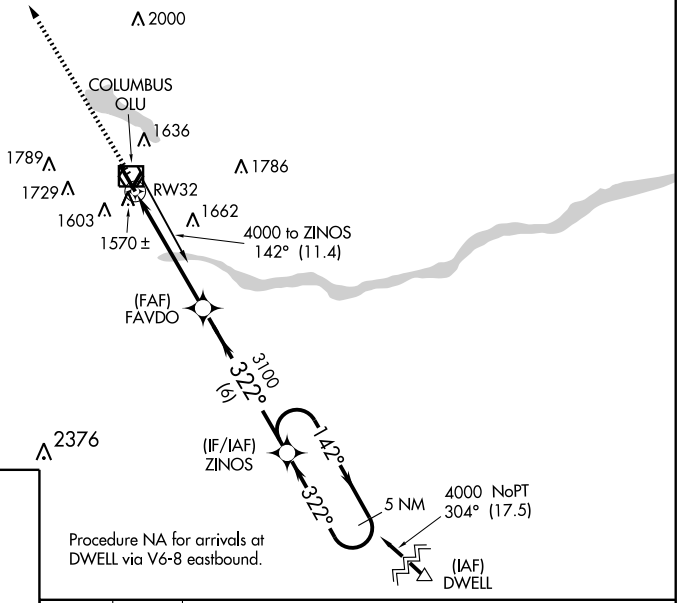
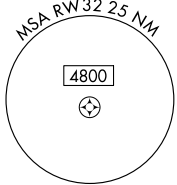
RNAV (GPS) RWY 32

COLUMBUS MUNI (OLU)

WAAS CH 81810 W32A	APP CRS 322°	Rwy Idg TDZE Apt Elev	5850 1442 1447
--	------------------------	-----------------------------	---

DME/DME RNP -0.3 NA Baro-VNAV NA below -1.5°C (5°F)	MISSED APPROACH: Climb to 4000 direct CAKFI and hold.
--	---

AWOS-3 125.525	MINNEAPOLIS CENTER 128.75 346.3	UNICOM 123.05 (CTAF) 0
--------------------------	---	----------------------------------



CATEGORY	A	B	C	D
LPV DA	1710-1		268 (300-1)	
LNAV/VNAV DA	1840-1½		398 (400-1½)	
LNAV MDA	1820-1		378 (400-1)	
CIRCLING	1940-1½		493 (500-1½)	

COLUMBUS, NEBRASKA
Orig-A 08325

41°27'N - 97°21'W

RNAV (GPS) RWY 32

NC-2, 22 OCT 2009 to 19 NOV 2009

NC-2, 22 OCT 2009 to 19 NOV 2009