

COLUMBUS, NEBRASKA

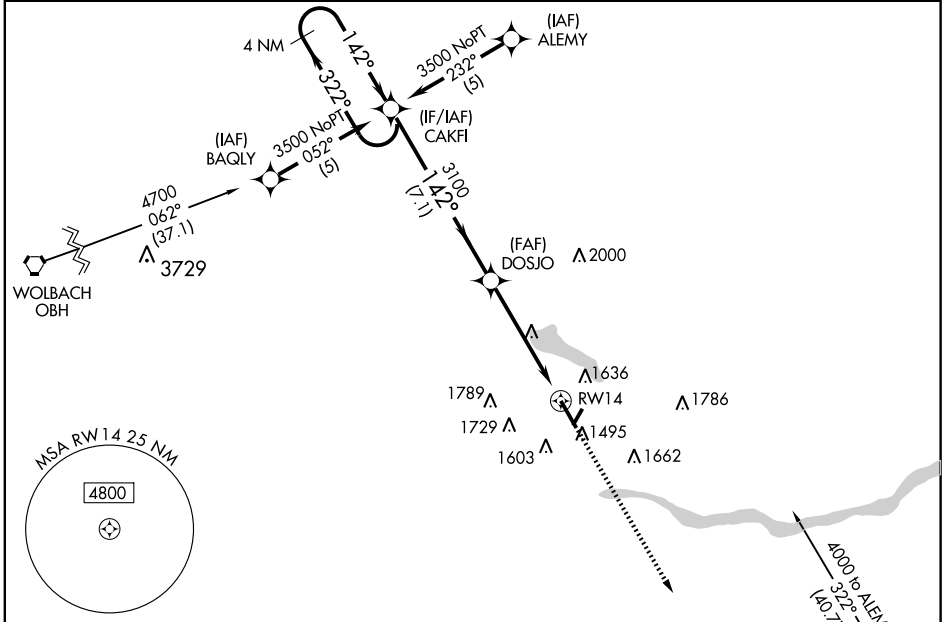
AL-5291 (FAA)

WAAS CH 60910 W14A	APP CRS 142°	Rwy Idg TDZE Apt Elev	6260 1447 1447
--	------------------------	-----------------------------	---

RNAV (GPS) RWY 14

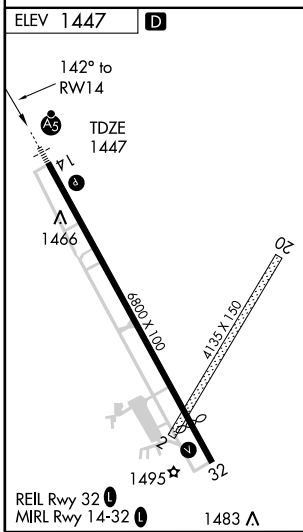
COLUMBUS MUNI (OLU)

▼ DME/DME RNP -0.3 NA. BARO-VNAV NA below -15°C (5°F). For inoperative MALSR increase LPV all Cats visibility to 1 mile.	MALSR 	MISSED APPROACH: Climb to 3200 direct ZINOS and hold.
	AWOS-3 125.525	MINNEAPOLIS CENTER 128.75 346.3



NC-2, 22 OCT 2009 to 19 NOV 2009

NC-2, 22 OCT 2009 to 19 NOV 2009



	4 NM Holding Pattern	CAKFI	* LNAV only	3200	ZINOS
		3500	DOSJO		
		3100			
		7.1 NM	3.6 NM	1.4	
CATEGORY	A	B	C	D	
LPV DA		1750-½	303 (400-½)		
LNAV/VNAV DA		1840-1	393 (400-1)		
LNAV MDA	1920-½	473 (500-½)	1920-¾ 473 (500-¾)	1920-1 473 (500-1)	
CIRCLING		1940-1½	493 (500-1½)	2040-2 593 (600-2)	

COLUMBUS, NEBRASKA
Orig-A 08325

41°27'N - 97°21'W

COLUMBUS MUNI (OLU) RNAV (GPS) RWY 14