

# RNAV (GPS) RWY 26

LAMAR MUNI (L.A.A)

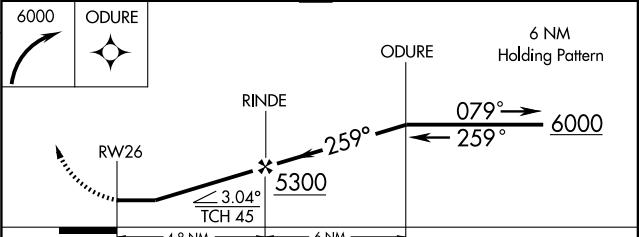
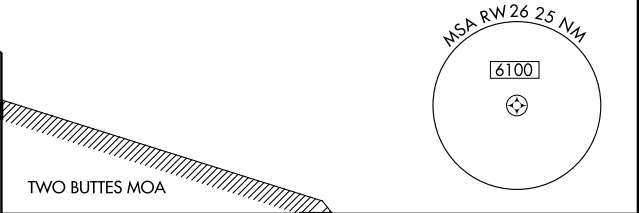
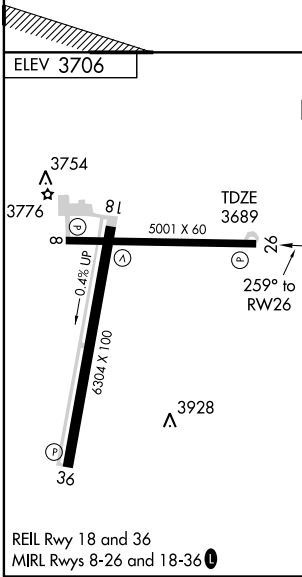
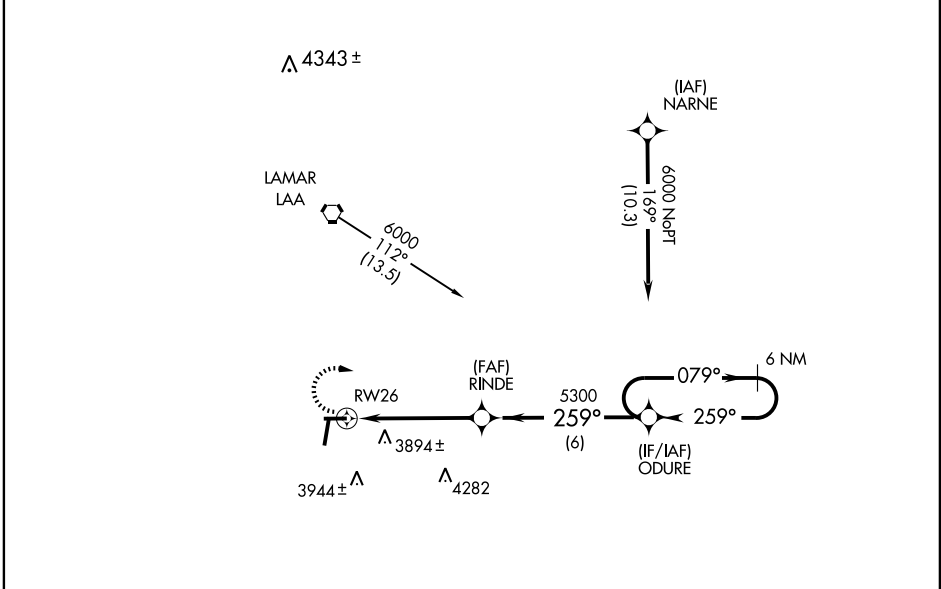
APP CRS <b>259°</b>	Rwy Idg <b>5001</b>
	TDZE <b>3689</b>
	Apt Elev <b>3706</b>

**⚠** Circling NA at night to Rwy 26, 8, and 36.  
Straight in NA at night to Rwy 26.

**⚠** NA GPS or RNP-0.3 required. DME/DME RNP-0.3 NA.

MISSED APPROACH: Climbing right turn to 6000 direct ODURE WP and hold.

ASOS <b>135.625</b>	DENVER CENTER <b>133.4 377.175</b>	UNICOM <b>122.8 (CTAF) 0</b>
------------------------	---------------------------------------	---------------------------------



CATEGORY	A	B	C	D
LNAV MDA	4180-1	491 (500-1)	4180-1¼ 491 (500-1¼)	4180-1½ 491 (500-1½)
CIRCLING	4420-1	714 (800-1)	4420-2 714 (800-2)	4420-2¼ 714 (800-2¼)

SW-1, 22 OCT 2009 to 19 NOV 2009

SW-1, 22 OCT 2009 to 19 NOV 2009