

LEESBURG, VIRGINIA

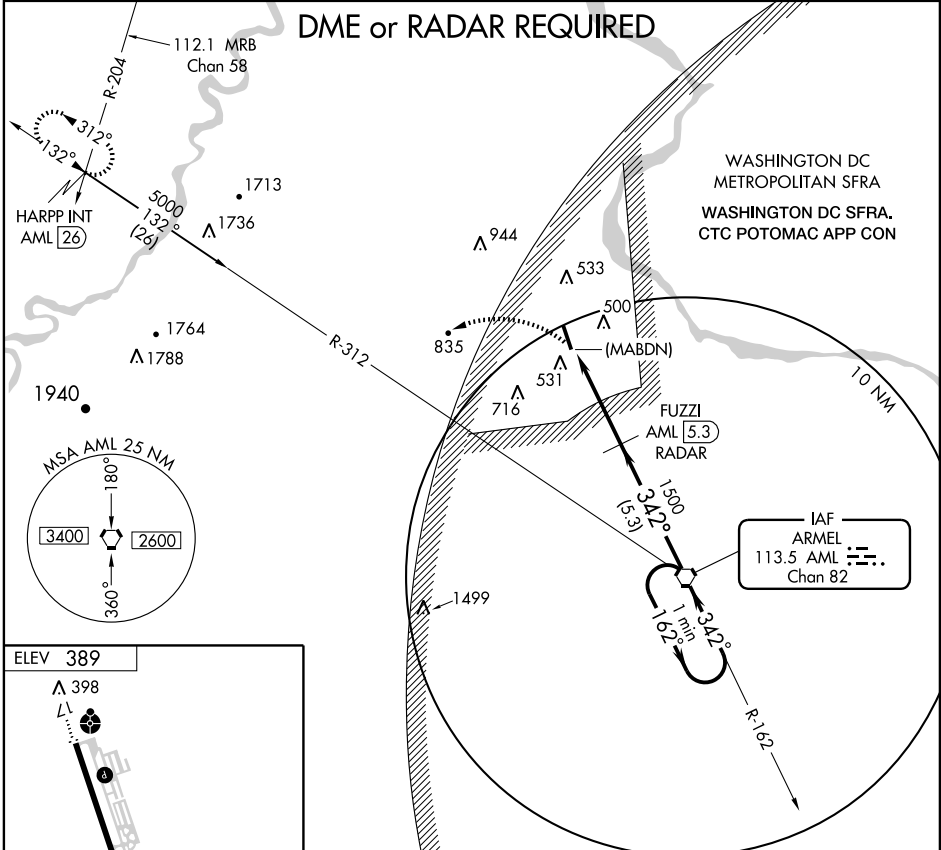
AL-5288 (FAA)

VORTAC AML 113.5 Chan 82	APP CRS 342°	Rwy Idg TDZE Apt Elev	N/A N/A 389
--	------------------------	-----------------------------	--

VOR or GPS-A
LEESBURG EXECUTIVE (JY0)

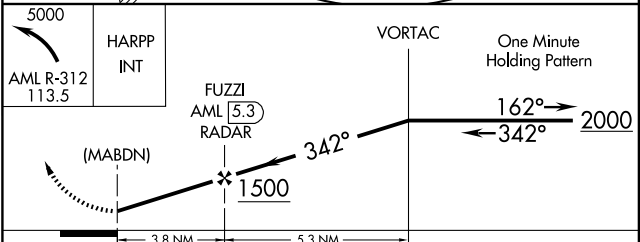
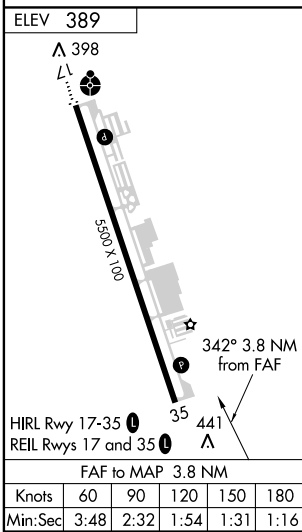
▼
MISSED APPROACH: Climbing left turn to 5000 via R-312 to HARPP Int/AML 26 DME and hold.

AWOS-3 125.225	POTOMAC APP CON 126.1 338.25	LEESBURG RADIO 122.6	CLNC DEL 118.55	UNICOM 122.975 (CTAF) 📻
--------------------------	--	--------------------------------	---------------------------	--



NE-3, 22 OCT 2009 to 19 NOV 2009

NE-3, 22 OCT 2009 to 19 NOV 2009



CATEGORY	A	B	C	D
CIRCLING	900-1	511 (600-1)	900-1½ 511 (600-1½)	1040-2 651 (700-2)

LEESBURG, VIRGINIA
Amdt 1B 09127

39°05'N - 77°33'W

LEESBURG EXECUTIVE (JY0)
VOR or GPS-A