

LEESBURG, VIRGINIA

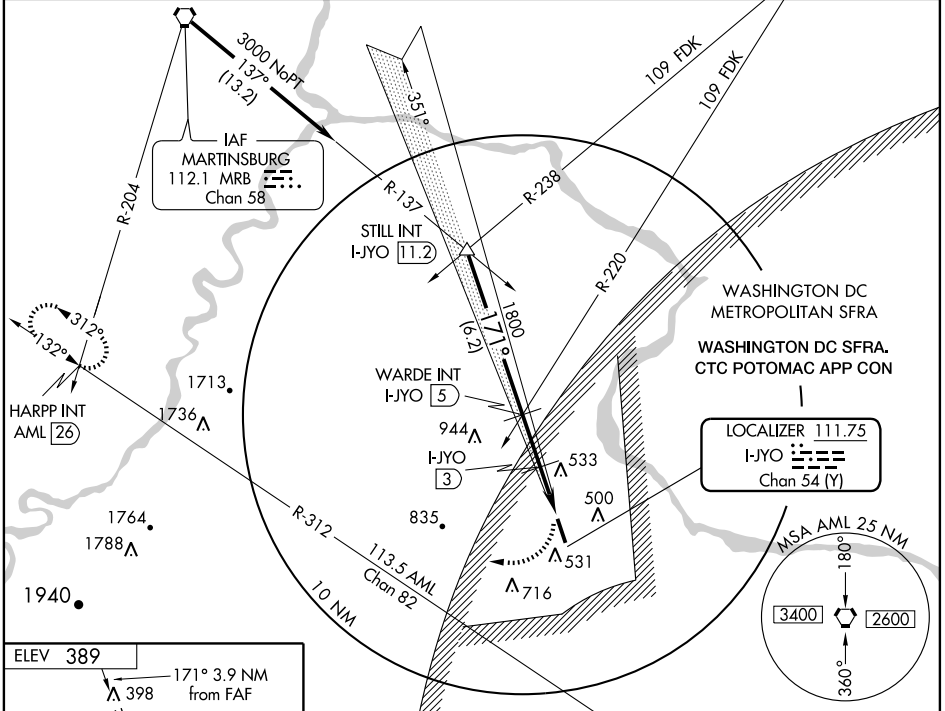
AL-5288 (FAA)

LOC I-JYO 111.75 Chan 54(Y)	APP CRS 171°	Rwy Idg TDZE Apt Elev	5500 382 389
---	------------------------	-----------------------------	---

LOC RWY 17
LEESBURG EXECUTIVE (JYO)

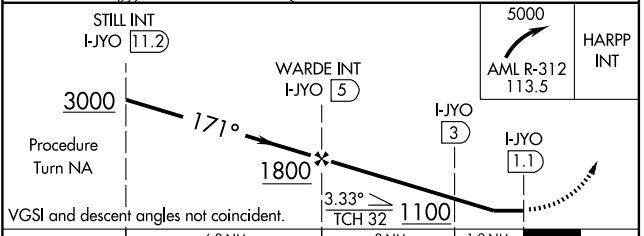
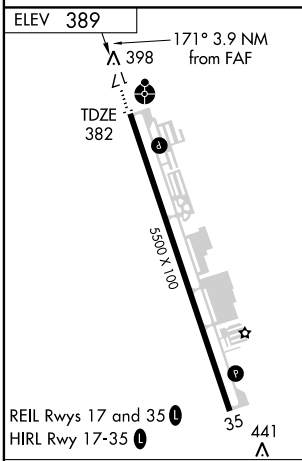
▼	ODALS ⬇	MISSED APPROACH: Climbing right turn to 5000 via AML R-312 to HARPP Int AML 26 DME and hold.

AWOS-3 125.225	POTOMAC APP CON 126.1 338.25	LEESBURG RADIO 122.6	CLNC DEL 118.55	UNICOM 122.975 (CTAF) ①
--------------------------	--	--------------------------------	---------------------------	-----------------------------------



NE-3, 22 OCT 2009 to 19 NOV 2009

NE-3, 22 OCT 2009 to 19 NOV 2009



CATEGORY	A	B	C	D
S-17	1100-1	718 (800-1)	1100-2 718 (800-2)	1100-2½ 718 (800-2½)
CIRCLING	1100-1	711 (800-1)	1100-2 711 (800-2)	1100-2½ 711 (800-2½)
DME MINIMUMS				
S-17	720-1 338 (400-1)			
CIRCLING	840-1	451 (500-1)	900-1½ 511 (600-1½)	1040-2 651 (700-2)

FAF to MAP 3.9 NM					
Knots	60	90	120	150	180
Min:Sec	3:54	2:36	1:57	1:34	1:18

LEESBURG, VIRGINIA
Amdt 2B 09127

39°05'N - 77°33'W

LEESBURG EXECUTIVE (JYO)
LOC RWY 17