

ELKHART, INDIANA

AL-5287 (FAA)

VORTAC GJ 115.4 Chan 101	APP CRS 281°	Rwy Idg TDZE 777 Apt Elev 778
--	------------------------	---

VOR RWY 27

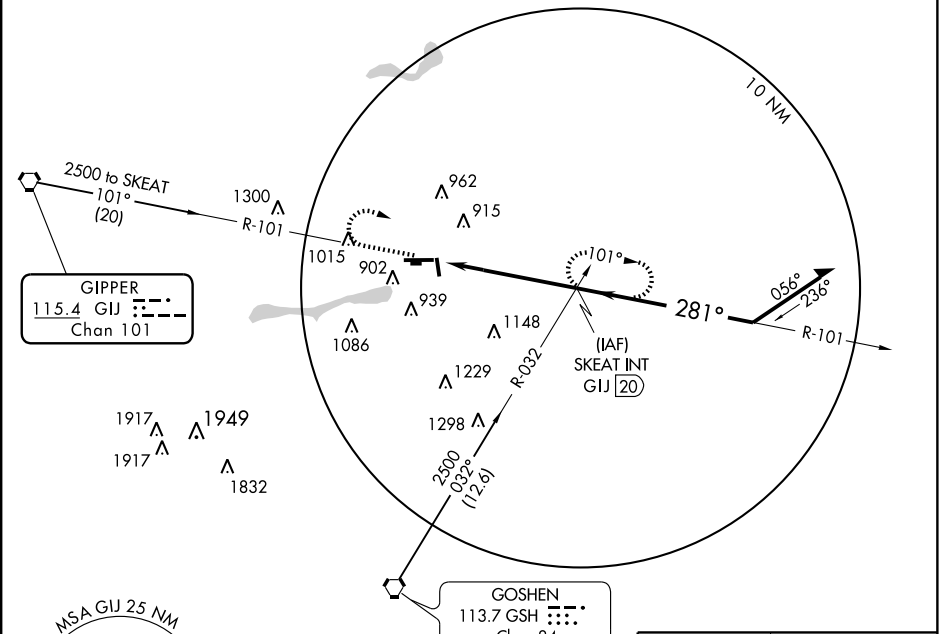
ELKHART MUNI (EKM)

▲ If local altimeter setting not received, use South Bend altimeter setting and increase all MDAs 40 feet. VDP NA with South Bend altimeter setting. Inoperative table does not apply.



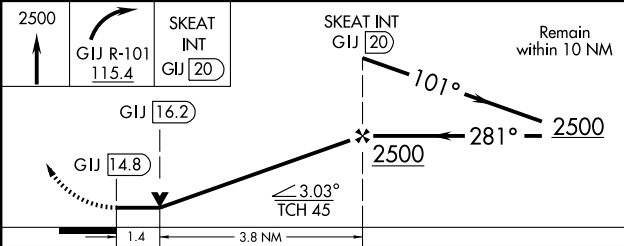
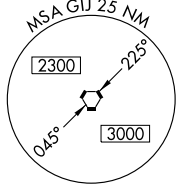
MISSED APPROACH: Climb to 2500 then right turn via GJ R-101 to SKEAT INT/GJ 20 DME and hold.

AWOS-3 124.475	SOUTH BEND APP CON ★ 118.55 257.8	ELKHART TOWER ★ 119.5 (CTAF) 0	GND CON 121.8	CLNC DEL 121.8	UNICOM 122.95
--------------------------	---	--	-------------------------	--------------------------	-------------------------



EC-2, 22 OCT 2009 to 19 NOV 2009

EC-2, 22 OCT 2009 to 19 NOV 2009



ELEV 778 **D**

MIRA Rwy 18-36
HIRL Rwy 9-27
REIL Rws 9, 18 and 36

FAF to MAP 5.2 NM

Knots	60	90	120	150	180
Min:Sec	5:12	3:28	2:36	2:05	1:44

CATEGORY	A	B	C	D
S-27	1280/50	503 (600-1)	1280-1 1/2	503 (600-1 1/2)
CIRCLING	1280-1 502 (600-1)	1300-1 522 (600-1)	1300-1 1/2 522 (600-1 1/2)	1340-2 562 (600-2)

ELKHART, INDIANA
Amdt 15A 09295

41°43'N - 86°00'W

ELKHART MUNI (EKM) VOR RWY 27