

RNAV (GPS) RWY 27

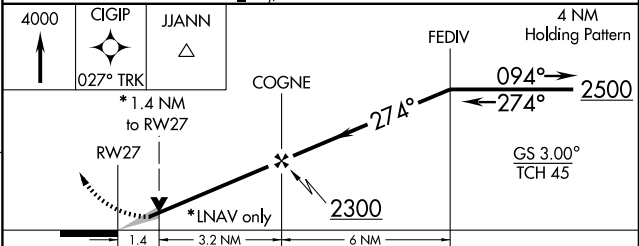
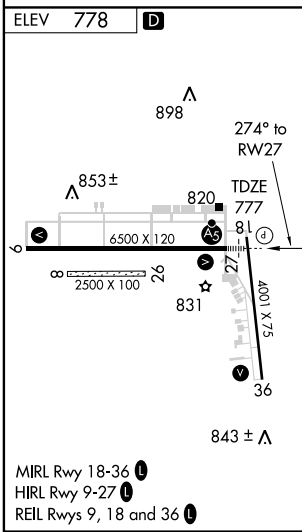
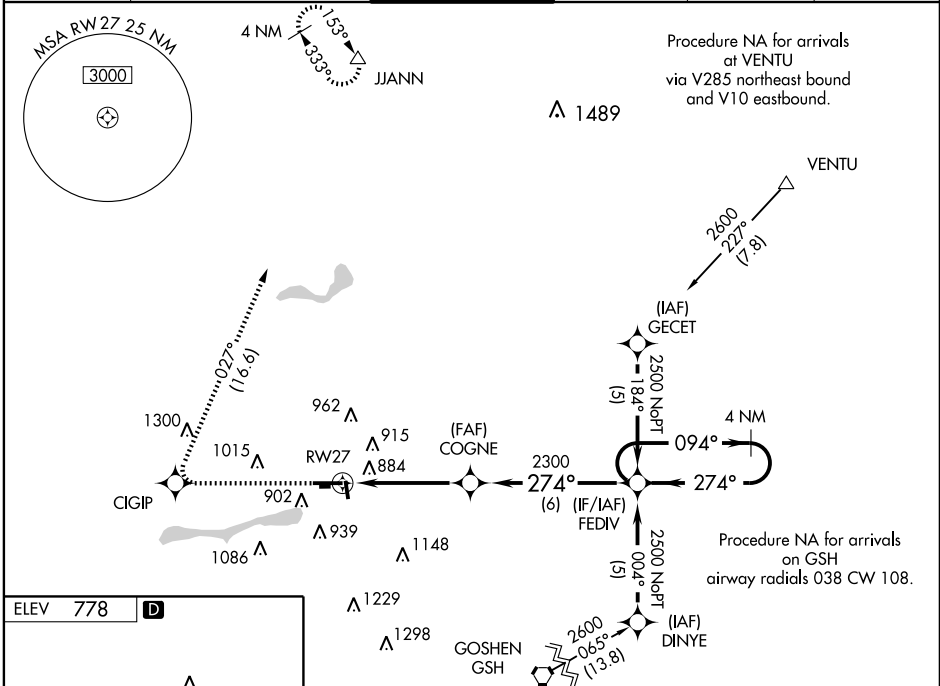
ELKHART MUNI (EKM)

WAAS CH 50107 W27A	APP CRS 274°	Rwy Idg TDZE 777 Apt Elev 778	6500
--	------------------------	---	-------------

⚠ DME/DME RNP-0.3 NA. Baro-VNAV NA below -16°C (4°F). If local altimeter setting not received, use South Bend altimeter setting and increase all DAs/MDAs 40 feet. VDP and Baro-VNAV NA with South Bend altimeter setting. For inoperative MALS, increase LPV visibility to RVR 5000 all Cats, increase LNAV Cat D visibility to RVR 6000.

MALS
 MISSED APPROACH: Climb to 4000 direct CIGIP and via 027° track to JJANN and hold.

AWOS-3 124.475	SOUTH BEND APP CON * 118.55 257.8	ELKHART TOWER * 119.5 (CTAF) 	GND CON 121.8	CLNC DEL 121.8	UNICOM 122.95
--------------------------	---	--	-------------------------	--------------------------	-------------------------



CATEGORY	A	B	C	D
LPV DA		1070/24	293 (300-1/2)	
LNAV/VNAV DA		1220/50	443 (500-1)	
LNAV MDA	1260/24	483 (500-1/2)	1260/40 483 (500-3/4)	1260/50 483 (500-1)
CIRCLING	1260-1 1/2 482 (500-1 1/2)	1300-1 1/2	522 (600-1 1/2)	1340-2 562 (600-2)

EC-2, 22 OCT 2009 to 19 NOV 2009

EC-2, 22 OCT 2009 to 19 NOV 2009