

# ILS or LOC RWY 27

ELKHART MUNI (EKM)

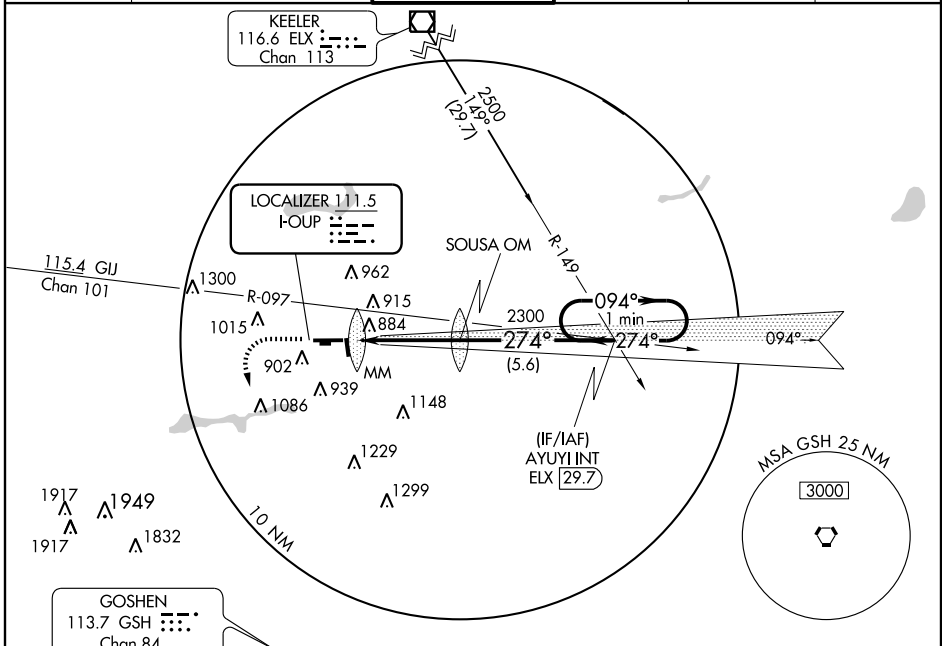
LOC I-OUF <b>111.5</b>	APP CRS <b>274°</b>	Rwy Idg TDZE Apt Elev	<b>6500</b> <b>777</b> <b>778</b>
---------------------------	------------------------	-----------------------------	---

**▲** If local altimeter setting not received use South Bend altimeter setting and increase all DAs/MDAs 40 feet.  
\* RVR 1800 authorized with the use of FD or AP or HUD to DA.



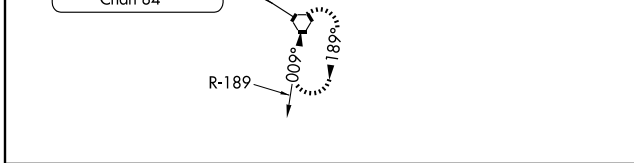
**MISSED APPROACH:** Climb to 1500 then climbing left turn to 2500 direct GSH VORTAC and hold.

AWOS-3 <b>124.475</b>	SOUTH BEND APP CON * <b>118.55 257.8</b>	ELKHART TOWER * <b>119.5 (CTAF) 0</b>	GND CON <b>121.8</b>	CLNC DEL <b>121.8</b>	UNICOM <b>122.95</b>
--------------------------	---	--	-------------------------	--------------------------	-------------------------



EC-2, 22 OCT 2009 to 19 NOV 2009

EC-2, 22 OCT 2009 to 19 NOV 2009



ELEV 778 **D**

898 274° 4.2 NM from FAF

853± 820 777 TDZE

6500 X 120

2500 X 100

831 27 4001 X 75

36

843±

MIRL Rwy 18-36

HIRL Rwy 9-27

REIL Rwys 9, 18 and 36

FAF to MAP 4.2 NM

Knots	60	90	120	150	180
Min:Sec	4:12	2:48	2:06	1:41	1:24

CATEGORY	A	B	C	D
S-ILS 27	* 977/24 200 (200-½)			
S-LOC 27	1180/24 403 (500-½)	1180/40 403 (500-¾)		
CIRCLING	1220-1 442 (500-1)	1300-1 522 (600-1)	1300-1½ 522 (600-1½)	1340-2 562 (600-2)