

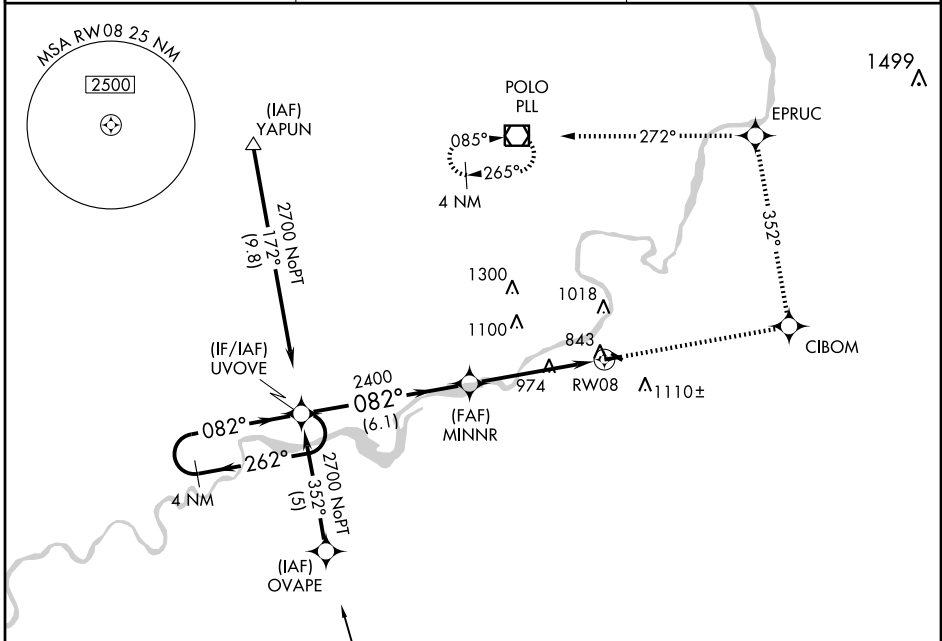
# RNAV (GPS) RWY 8

DIXON MUNI-CHARLES R. WALGREEN FIELD (C73)

APP CRS	Rwy Idg	<b>3899</b>
<b>082°</b>	TDZE	<b>782</b>
	Apt Elev	<b>785</b>

<p><b>▼</b> DME/DME RNP-0.3 NA. Visibility reduction by helicopters NA.  <b>▲</b> NA Use Rochelle altimeter setting, when not received use Sterling-Rockfalls altimeter setting.</p>	<p>MISSED APPROACH: Climb to 2700 direct CIBOM and via track 352° to EPRUC and via track 272° to PLL VOR/DME and hold.</p>
--	--

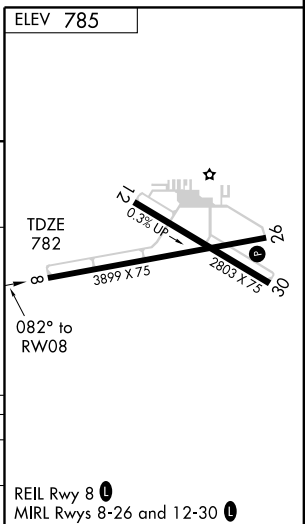
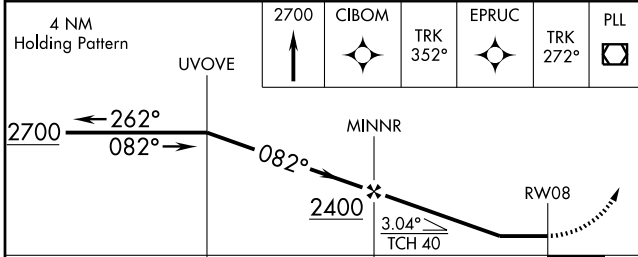
<p>ROCHELLE AWOS-3 <b>119.675</b></p>	<p>ROCKFORD APP CON <b>126.0 327.0</b></p>	<p>UNICOM <b>123.05 (CTAF) 0</b></p>
---	--	--



EC-3, 22 OCT 2009 to 19 NOV 2009

EC-3, 22 OCT 2009 to 19 NOV 2009

Procedure NA for arrivals at WYNET via V127 Southbound.



CATEGORY	A	B	C	D
LNVA MDA	1280-1	498 (500-1)	1280-1¼ 498 (500-1¼)	NA
CIRCLING	1500-1 715 (800-1)	1520-1 735 (800-1)	1520-2 735 (800-2)	NA

REIL Rwy 8 **0**  
MIRL Rwy 8-26 and 12-30 **0**