

DIXON, ILLINOIS

AL-5285 (FAA)

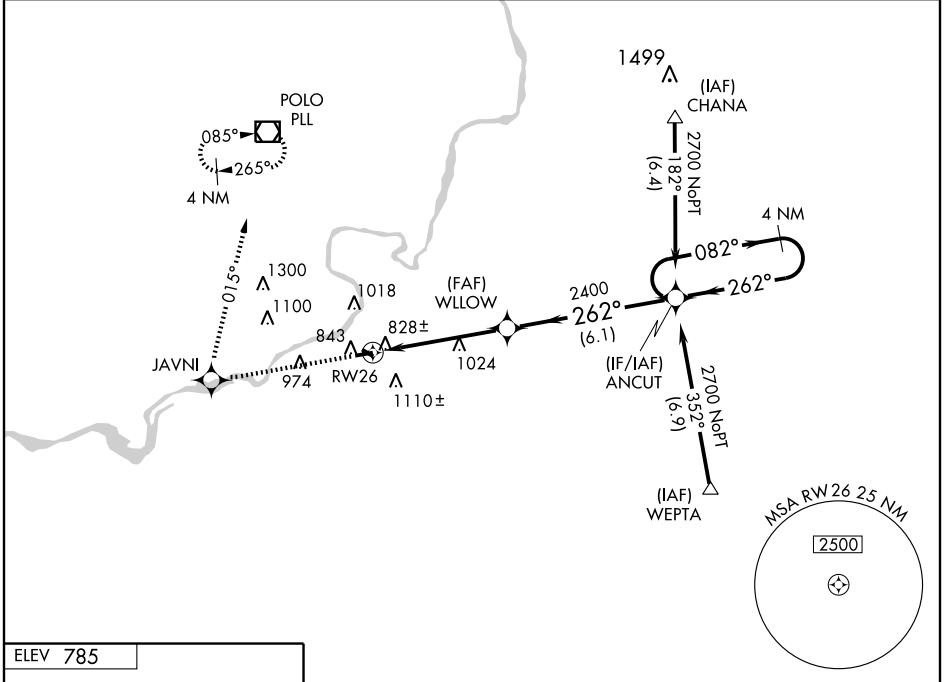
WAAS CH 65712 W26A	APP CRS 262°	Rwy Idg TDZE Apt Elev	3899 784 785
--	------------------------	-----------------------------	---

RNAV (GPS) RWY 26

DIXON MUNI-CHARLES R. WALGREEN FIELD (C73)

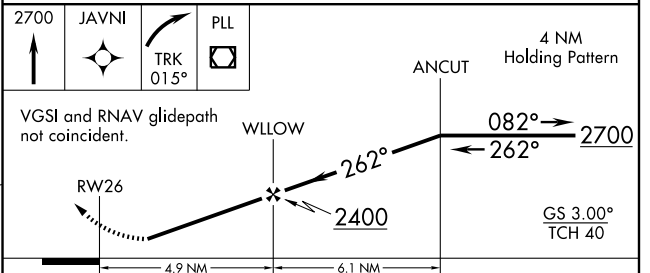
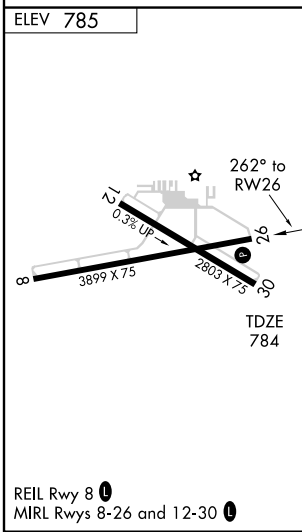
<p>▼ Baro-VNAV NA. DME/DME RNP-0.3 NA. Visibility reduction by helicopters NA. Use Rochelle altimeter setting, when not received use Sterling-Rockfalls altimeter setting.</p> <p>▲ NA</p>	<p>MISSED APPROACH: Climb to 2700 direct JAVNI and right turn via track 015° to PLL VOR/DME and hold.</p>
--	---

ROCHELLE AWOS-3 119.675	ROCKFORD APP CON 126.0 327.0	UNICOM 123.05 (CTAF) 0
-----------------------------------	--	----------------------------------



EC-3, 22 OCT 2009 to 19 NOV 2009

EC-3, 22 OCT 2009 to 19 NOV 2009



CATEGORY	A	B	C	D
LPV DA	1107-1¼	323 (400-1¼)		NA
LNAV/VNAV DA	1377-2	593 (600-2)		NA
LNAV MDA	1340-1	556 (600-1)	1340-1½ 556 (600-1½)	NA
CIRCLING	1500-1 715 (800-1)	1520-1 735 (800-1)	1520-2 735 (800-2)	NA

DIXON, ILLINOIS
Orig-A 09267

DIXON MUNI-CHARLES R. WALGREEN FIELD (C73)
41° 50'N - 89° 27'W
RNAV (GPS) RWY 26