

RNAV (GPS) RWY 32

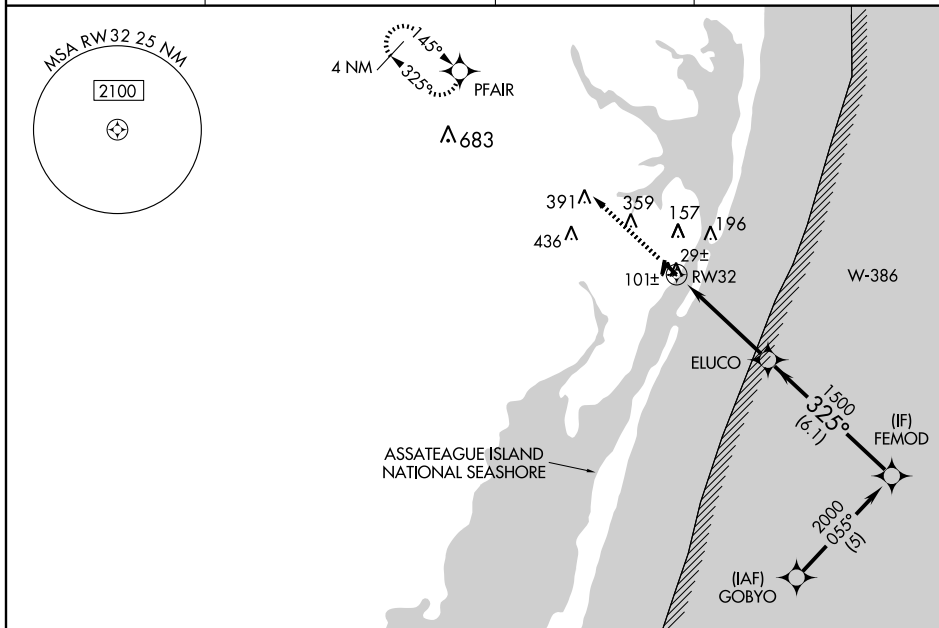
OCEAN CITY MUNI (OXB)

WAAS CH 40413 W 32A	APP CRS 325°	Rwy Idg 4072 TDZE 11 Apt Elev 11
---	------------------------	---

⚠ For uncompensated Baro-VNAV systems, LNAV/VNAV NA below -15°C (5°F) or above 48°C (118°F).
 ⚠ DME/DME RNP -0.3 NA. Baro-VNAV and VDP NA when using Salisbury altimeter setting. When local altimeter setting not received, use Salisbury altimeter setting and increase all DA 48 feet and all MDA 60 feet, increase LNAV/VNAV all Cats, LNAV Cats C/D and Circling Cats C/D visibilities ¼ mile.

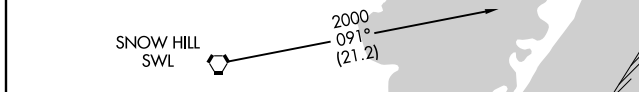
MISSED APPROACH: Climb to 2000 direct PFAIR and hold.

ASOS 119.025	PATUXENT APP CON * 127.95 314.0	CLNC DEL 121.75	UNICOM 123.05 (CTAF) 0
------------------------	---	---------------------------	----------------------------------



NE-3, 22 OCT 2009 to 19 NOV 2009

NE-3, 22 OCT 2009 to 19 NOV 2009



2000 PFAIR	VGSI and RNAV glidepath not coincident.				Procedure Turn NA
*LNAV only	*1.1 NM to RWY32	ELUCO 1500	FEMOD 2000	325°	GS 3.00° TCH 40
CATEGORY	A	B	C	D	
LPV DA	261-1		250 (300-1)		
LNAV/VNAV DA	289-1		278 (300-1)		
LNAV MDA	380-1 369 (400-1)		380-1½ 369 (400-1½)		
CIRCLING	480-1 469 (500-1)		660-1¾ 649 (700-1¾) 720-2½ 709 (800-2½)		

