

# RNAV (GPS) RWY 2

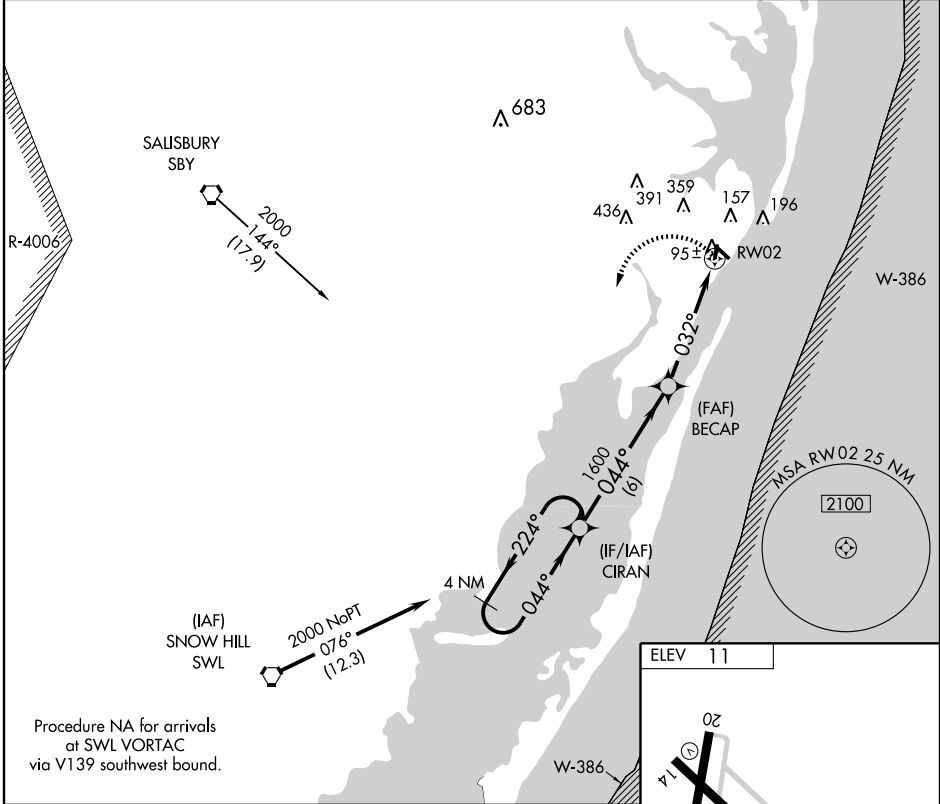
OCEAN CITY MUNI (OXB)

APP CRS	Rwy Idg	<b>3201</b>
<b>032°</b>	TDZE	<b>11</b>
	Apt Elev	<b>11</b>

**⚠** If local altimeter setting not received, use Salisbury altimeter setting and increase all MDAs 60 feet.  
**⚠** DME/DME RNP-0.3 NA. Procedure NA at night.

MISSED APPROACH: Climbing left turn to 2000 direct CIRAN and hold.

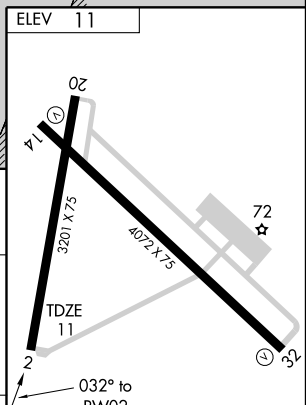
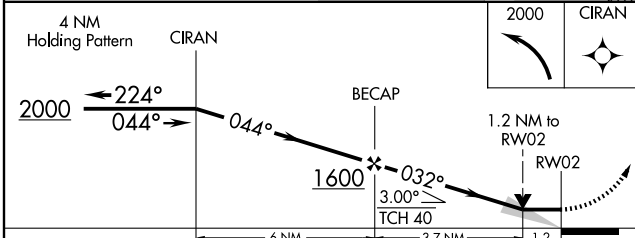
ASOS <b>119.025</b>	PATUXENT APP CON * <b>127.95 314.0</b>	CLNC DEL <b>121.75</b>	UNICOM <b>123.05 (CTAF) 0</b>
------------------------	---	---------------------------	----------------------------------



NE-3, 22 OCT 2009 to 19 NOV 2009

NE-3, 22 OCT 2009 to 19 NOV 2009

Procedure NA for arrivals at SWL VORTAC via V139 southwest bound.



CATEGORY	A	B	C	D
LNVA MDA	420 - 1	409 (500-1)	420 - 1¼ 409 (500-1¼)	NA
CIRCLING	480 - 1	469 (500-1)	660 - 1¾ 649 (700-1¾)	NA

MIRL Rwy's 2-20 and 14-32 0