

MOUNT PLEASANT, MICHIGAN

AL-5283 (FAA)

VOR/DME MOP 110.6 Chan 43	APP CRS 284°	Rwy Idg TDZE 753 Apt Elev 755	5001
---	------------------------	---	-------------

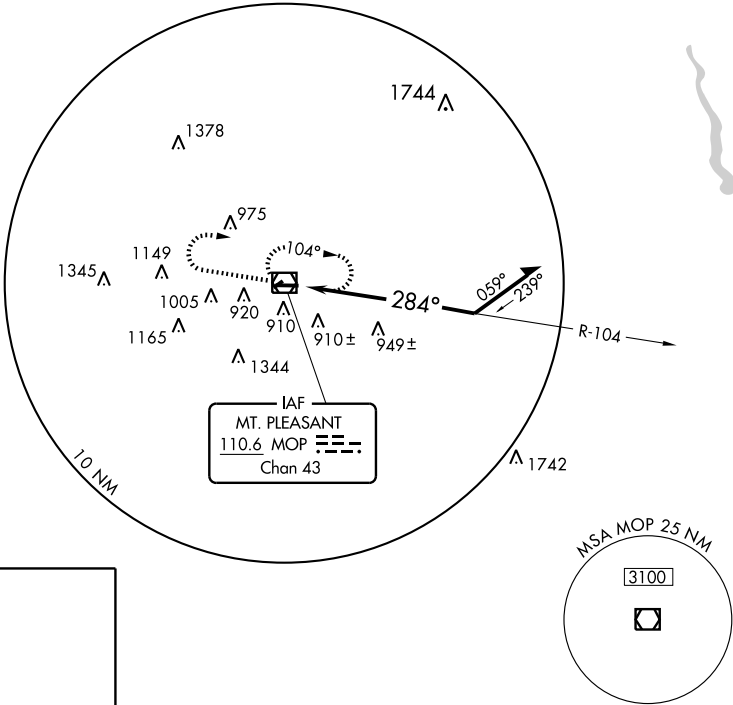
VOR RWY 27

MOUNT PLEASANT MUNI (MOP)

⚠ Visibility reduction by helicopters NA. When local altimeter setting not received, use Alma altimeter setting and increase all MDA 60 feet, S-27 Cat D and Circling Cat C visibilities ¼ mile. VDP NA when using Alma altimeter setting.

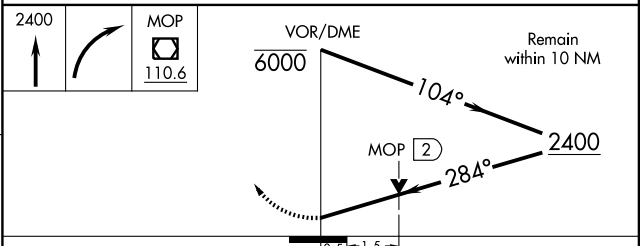
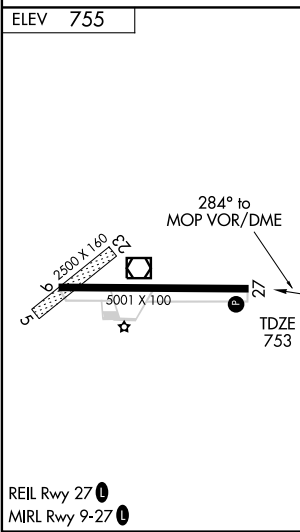
⚠ MISSED APPROACH: Climb to 2400 then right turn direct MOP VOR/DME and hold.

AWOS-3 110.6	SAGINAW APP CON ★ 126.45 235.625	UNICOM 123.0 (CTAF) ①
------------------------	--	---------------------------------



EC-1, 22 OCT 2009 to 19 NOV 2009

EC-1, 22 OCT 2009 to 19 NOV 2009



CATEGORY	A	B	C	D
S-27	1260-1	507 (600-1)	1260-1½	507 (600-1½)
CIRCLING	1260-1	505 (600-1)	1320-1½ 565 (600-1½)	1360-2 605 (700-2)

MOUNT PLEASANT, MICHIGAN
Amdt 1 09239

43°37'N - 84°44'W

MOUNT PLEASANT MUNI (MOP) VOR RWY 27