

WARSAW, INDIANA

AL-5282 (FAA)

ILS or LOC/DME RWY 27

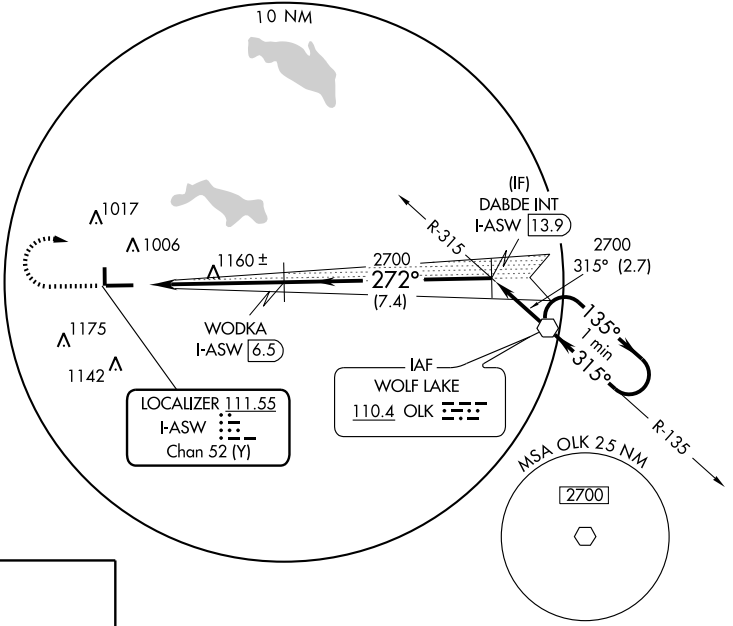
WARSAW MUNI (ASW)

LOC/DME I-ASW 111.55 Chan 52(Y)	APP CRS 272°	Rwy Idg 5101	TDZE 848
		Apt Elev 850	

MISSED APPROACH: Climb to 1500 then climbing right turn to 2700 direct OLK VOR and hold.

AWOS-3 121.125	FORT WAYNE APP CON 127.2 284.6	CINC DEL 134.05	UNICOM 122.7 (CTAF)
--------------------------	--	---------------------------	-------------------------------

△1357



EC-2, 22 OCT 2009 to 19 NOV 2009

EC-2, 22 OCT 2009 to 19 NOV 2009

ELEV 850 **D**

△ 940±

81

4012 X 75

☆ 893

6

6002 X 100

36

272° 5.5 NM from FAF

27

TDZE 848

HIRL Rwy 9-27 **1**

MIRL Rwy 18-36 **1**

REIL Rwy 9 and 27 **1**



CATEGORY	A	B	C	D
S-ILS 27	1048-¾ 200 (200-¾)			
S-LOC 27	1460-1	612 (700-1)	1460-1¾ 612 (700-1¾)	1460-2 612 (700-2)
CIRCLING	1460-1	610 (700-1)	1460-1¾ 610 (700-1¾)	1460-2 610 (700-2)

WARSAW, INDIANA
Orig-C 09295

WARSAW MUNI (ASW)
41°16'N - 85°50'W **ILS or LOC/DME RWY 27**