

VOR/DME MTW 111.0 Chan 47	APP CRS 357°	Rwy Idg 5001 TDZE 651 Apt Elev 651
---	------------------------	---

VOR/DME RWY 35

MANITOWOC COUNTY(MTW)

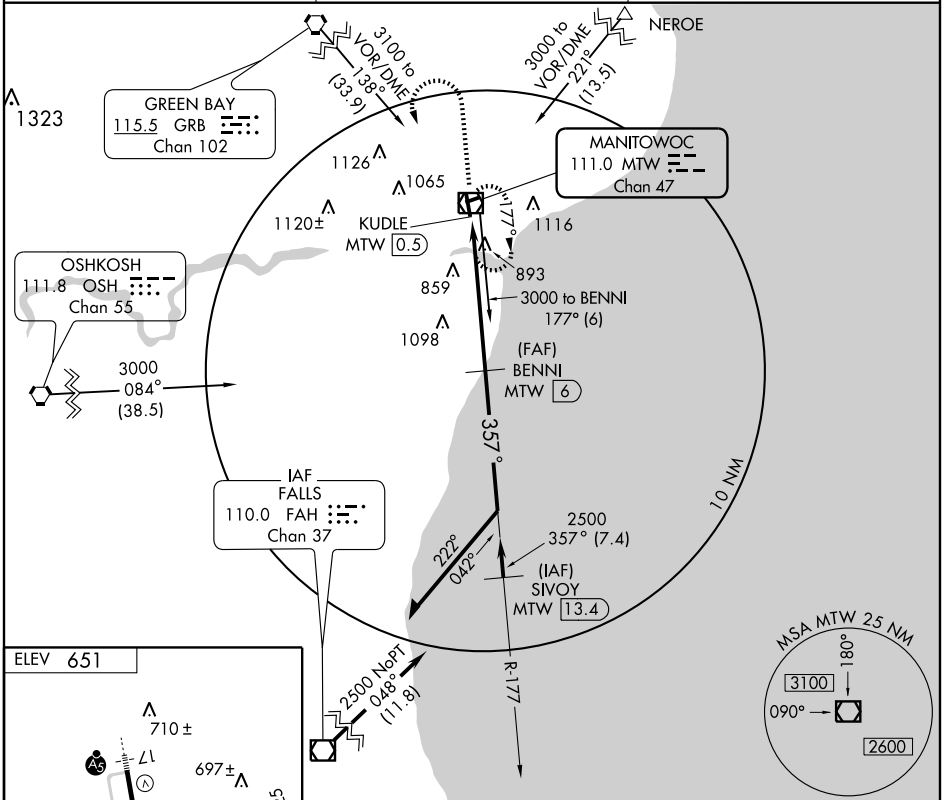
⚠ Visibility reduction by helicopters NA. VDP NA when using Sheboygan altimeter setting. When local altimeter setting not received, use Sheboygan altimeter setting and increase all MDA 80 feet, increase S-35 Cat. D and Circling Cats. C and D visibility ¼ mile.

MISSED APPROACH: Climb to 2000 then climbing left turn to 3000 direct MTW VOR/DME and hold.

AWOS-3
111.0

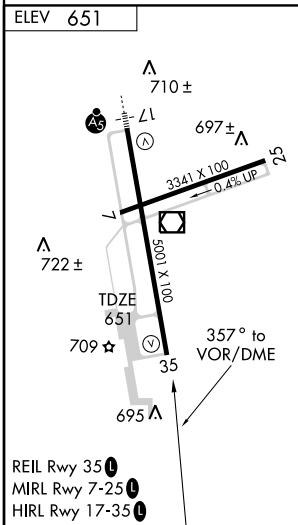
GREEN BAY APP CON ★
120.2 338.2

UNICOM
122.8 (CTAF) 0



EC-3, 22 OCT 2009 to 19 NOV 2009

EC-3, 22 OCT 2009 to 19 NOV 2009



2000	3000	MTW	BENNI	Remain within 10 NM
↑	↪	☐	MTW 6	
		111.0		
VOR/DME	KUDLE	MTW	3000	
	MTW 0.5	1.9	177°	
			357°	
			2500	
			≤ 3.07°	
			TCH 43	
	1.5 NM	4.1 NM		
CATEGORY	A	B	C	D
S-35	1160-1 509 (600-1)		1160-1½ 509 (600-1½)	
CIRCLING	1200-1 549 (600-1)		1200-1½ 549 (600-1½)	1420-2½ 769 (800-2½)