

RNAV (GPS) RWY 35

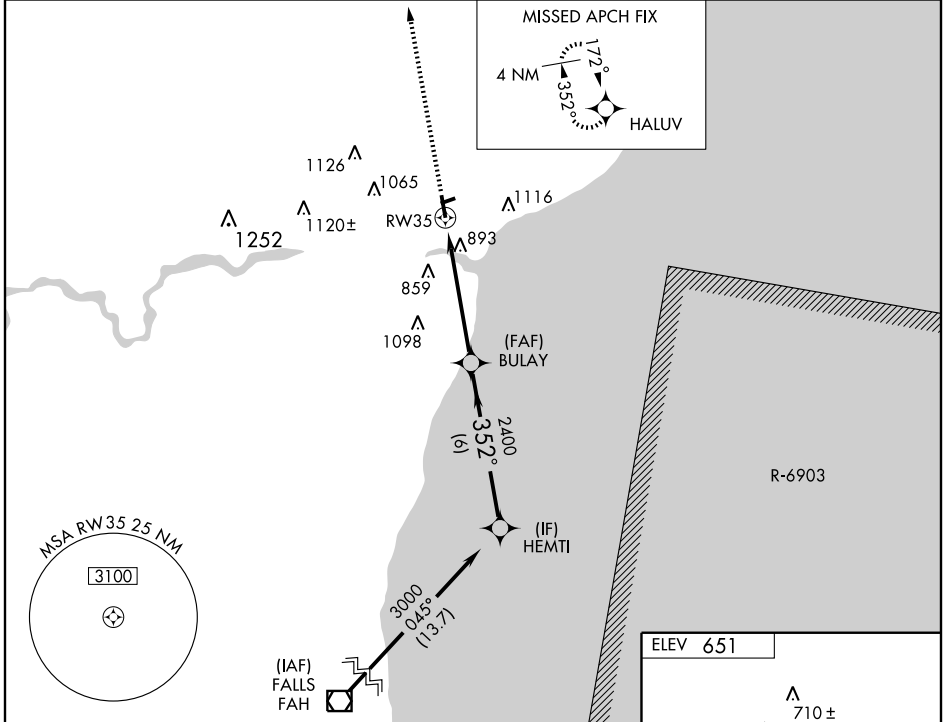
MANITOWOC COUNTY (MTW)

WAAS CH 82611 W35A	APP CRS 352°	Rwy Idg TDZE Apt Elev	5001 651 651
--	------------------------	-----------------------------	---

⚠ For uncompensated Baro-VNAV systems, LNAV/VNAV NA below -16°C (4°F) or above 47°C (116°F). DME/DME RNP-0.3 NA. Visibility reduction by helicopters NA. VDP and Baro-VNAV NA when using Sheboygan altimeter setting. When local altimeter setting not received, use Sheboygan altimeter setting and increase all DA 67 feet and all MDA 80 feet, increase LPV all Cats., LNAV/VNAV all Cats., LNAV Cat. D, and Circling Cat. C and D visibility ¼ mile.

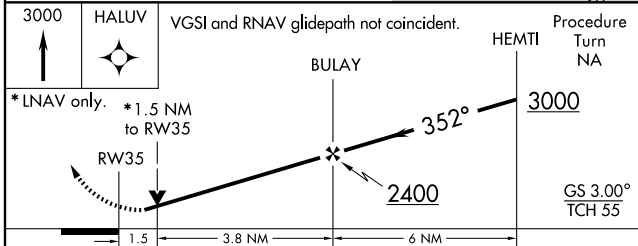
MISSED APPROACH: Climb to 3000 direct HALUV and hold.

AWOS-3 111.0	GREEN BAY APP CON ★ 120.2 338.2	UNICOM 122.8 (CTAF)
------------------------	---	-------------------------------



EC-3, 22 OCT 2009 to 19 NOV 2009

EC-3, 22 OCT 2009 to 19 NOV 2009



3000	↑	HALUV	VGSI and RNAV glidepath not coincident.		Procedure Turn NA
*RNAV only.		*1.5 NM to RWY35			
CATEGORY	A	B	C	D	
LPV DA	1006-1¼		355 (400-1¼)		
LNAV/VNAV DA	1199-2		548 (600-2)		GS 3.00° TCH 55
LNAV MDA	1160-1	509 (600-1)	1160-1½	509 (600-1½)	
CIRCLING	1200-1	549 (600-1)	1200-1½	1420-2½	769 (800-2½)

