


# RNAV (GPS) RWY 17

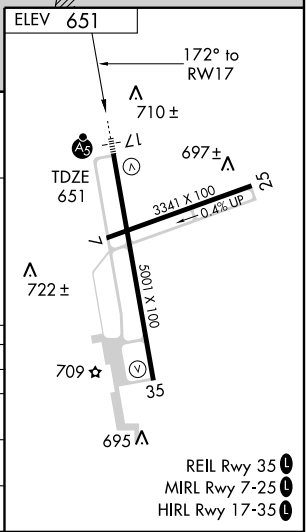
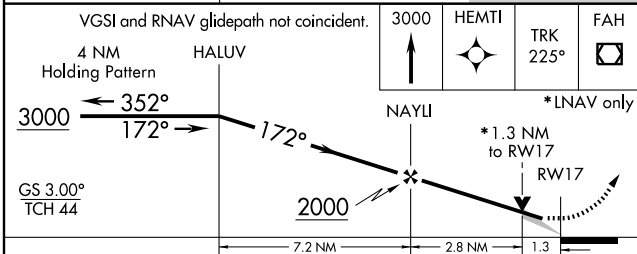
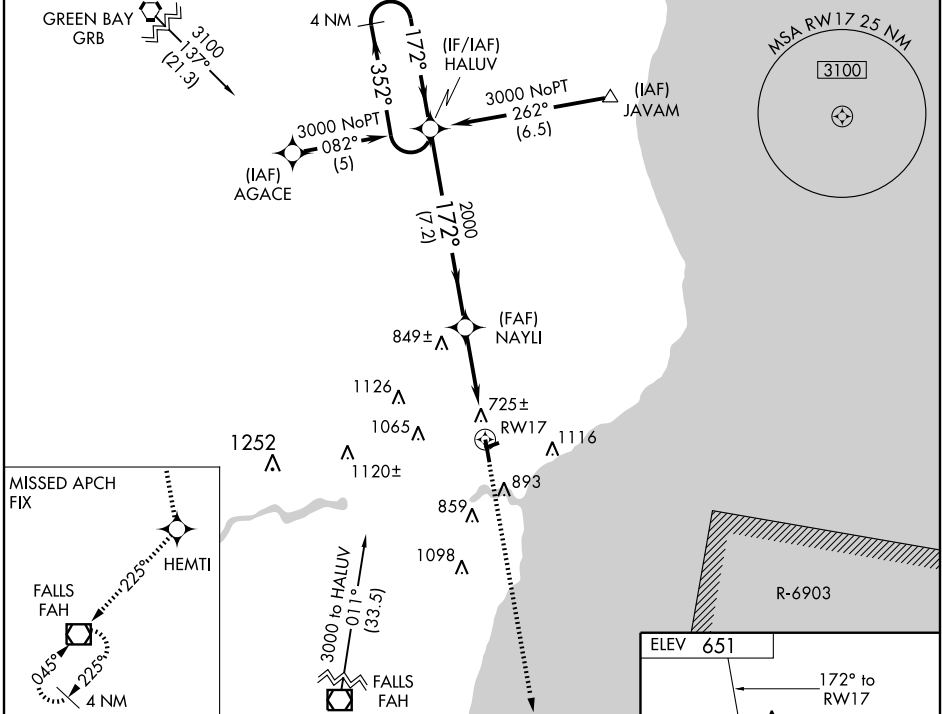
MANITOWOC COUNTY (MTW)

WAAS CH <b>63111</b> <b>W17A</b>	APP CRS <b>172°</b>	Rwy Idg TDZE Apt Elev	<b>5001</b> <b>651</b> <b>651</b>
--	------------------------	-----------------------------	---

**▼** For inoperative MALSR when using Sheboygan altimeter setting, increase LPV all Cats. visibility to 1 mile. For uncompensated Baro-VNAV systems, procedure NA below -16°C (4°F) or above 47°C (116°F). DME/DME RNP-0.3 NA. VDP and Baro-VNAV NA when using Sheboygan altimeter setting. When local altimeter setting not received, use Sheboygan altimeter setting and increase all DA 67 feet and all MDA 80 feet, increase LNAV/VNAV all Cats., LNAV Cat. C and D, and Circling Cat. C and D visibility ¼ mile.

**MALSR**  
 ...  
**MISSED APPROACH:**  
 Climb to 3000 direct HEMTI and via 225° track to FAH VOR/DME and hold.

AWOS-3 <b>111.0</b>	GREEN BAY APP CON * <b>120.2 338.2</b>	UNICOM <b>122.8 (CTAF)</b>
------------------------	---	-------------------------------



CATEGORY	A	B	C	D
LPV DA		851-½	200 (200-½)	
LNAV/VNAV DA		993-¾	342 (400-¾)	
LNAV MDA	1100-½	449 (500-½)	1100-¾ 449 (500-¾)	1100-1 449 (500-1)
CIRCLING	1200-1	549 (600-1)	1200-1½ 549 (600-1½)	1420-2½ 769 (800-2½)

REIL Rwy 35  
MIRL Rwy 7-25  
HIRL Rwy 17-35

EC-3, 22 OCT 2009 to 19 NOV 2009

EC-3, 22 OCT 2009 to 19 NOV 2009