

ILS or LOC RWY 17

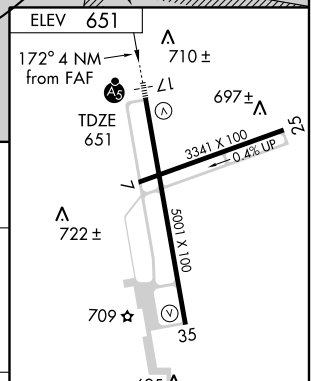
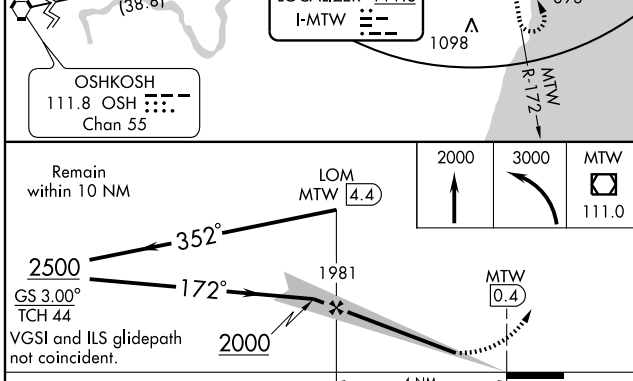
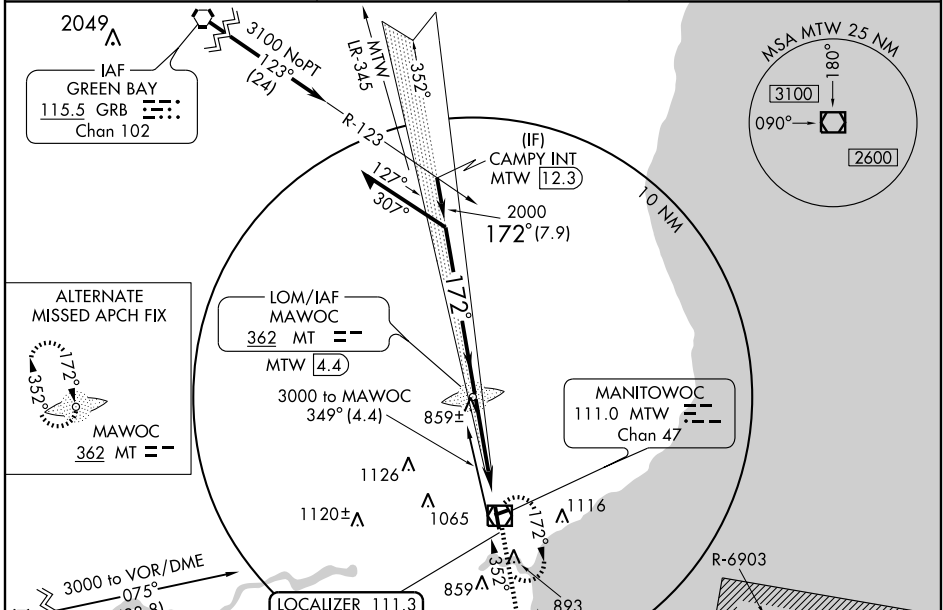
MANITOWOC COUNTY (MTW)

LOC I-MTW 111.3	APP CRS 172°	Rwy ldg 5001
		TDZE 651
		Apt Elev 651

When local altimeter setting not received, use Sheboygan altimeter setting and increase all DA 67 feet and all MDA 80 feet, increase S-LOC 17 Cats. C and D and Circling Cats. C and D visibility ¼ mile.
 When using Sheboygan altimeter setting: For inoperative MALSR, increase S-ILS 17 all Cats. visibility to 1.

MALSR
 MISSED APPROACH: Climb to 2000 then climbing left turn to 3000 direct MTW VOR/DME and hold.

AWOS-3 111.0	GREEN BAY APP CON★ 120.2 338.2	UNICOM 122.8 (CTAF)
------------------------	--	-------------------------------



CATEGORY	A	B	C	D
S-ILS 17	851-½ 200 (200-½)			
S-LOC 17	1120-½ 469 (500-½)	1120-¾ 469 (500-¾)	1120-1 469 (500-1)	1120-1 469 (500-1)
CIRCLING	1200-1 549 (600-1)	1200-1½ 549 (600-1½)	1420-2½ 769 (800-2½)	1420-2½ 769 (800-2½)

REIL Rwy 35	MIRL Rwy 7-25	HIRL Rwy 17-35			
FAF to MAP 4 NM					
Knots	60	90	120	150	180
Min:Sec	4:00	2:40	2:00	1:36	1:20

EC-3, 22 OCT 2009 to 19 NOV 2009

EC-3, 22 OCT 2009 to 19 NOV 2009