

KANKAKEE, ILLINOIS

AL-5278 (FAA)

VOR/DME IKK 111.6 Chan 53	APP CRS 231°	Rwy Idg 5979 TDZE 630 Apt Elev 630
---	------------------------	---

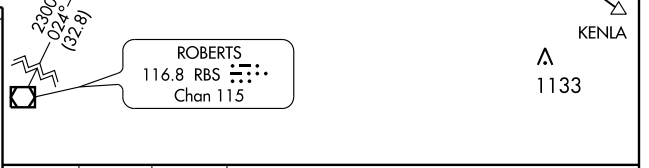
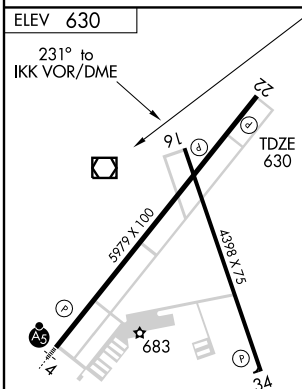
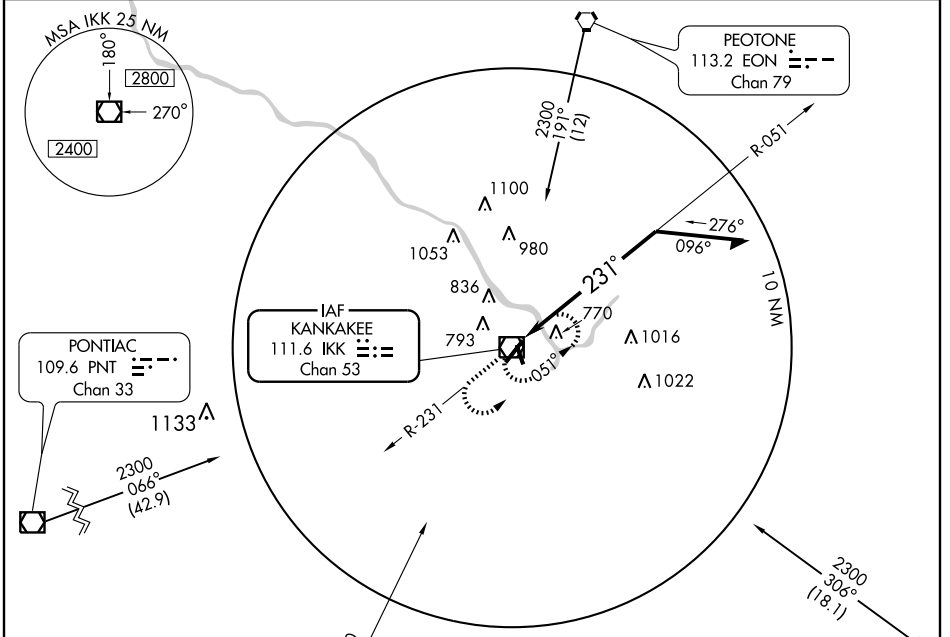
VOR RWY 22

KANKAKEE/ GREATER KANKAKEE (IKK)

⚠ If local altimeter setting not received, use Pontiac Muni altimeter setting and increase all MDAs 100 feet.
 ⚠ VDP NA when using Pontiac Muni altimeter setting.

MISSED APPROACH: Climb to 2300 via IKK R-231, then left turn direct IKK VOR/DME and hold.

AWOS-3 111.6	CHICAGO CENTER 132.5 258.1	KANKAKEE RADIO 122.2 255.4	CTAF 123.0
------------------------	--------------------------------------	--------------------------------------	----------------------



Knots	60	90	120	150	180
Min:Sec					

CATEGORY	A	B	C	D
S-22	1080-1	450 (500-1)	1080-1¼ 450 (500-1¼)	1080-1½ 450 (500-1½)
CIRCLING	1080-1 450 (500-1)	1100-1 470 (500-1)	1100-1½ 470 (500-1½)	1180-2 550 (600-2)

KANKAKEE, ILLINOIS
Amdt 7 07074

41°04'N - 87°51'W

KANKAKEE/ GREATER KANKAKEE (IKK)
VOR RWY 22

EC-3, 22 OCT 2009 to 19 NOV 2009

EC-3, 22 OCT 2009 to 19 NOV 2009