

KANKAKEE, ILLINOIS

AL-5278 (FAA)

ILS or LOC RWY 4

KANKAKEE/GREATER KANKAKEE (IKK)

LOC I- IKK 108.7	APP CRS 038°	Rwy ldg TDZE Apt Elev	5979 625 630
-----------------------------------	------------------------	-----------------------------	---

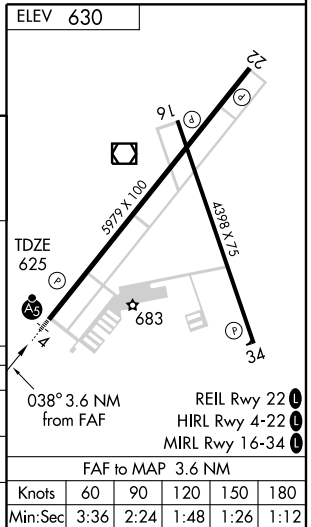
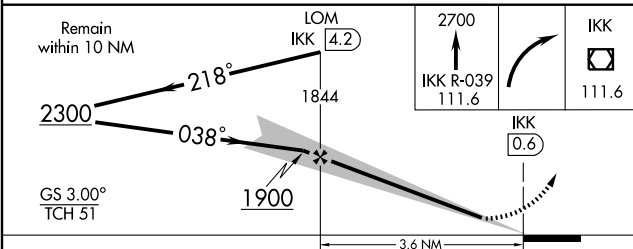
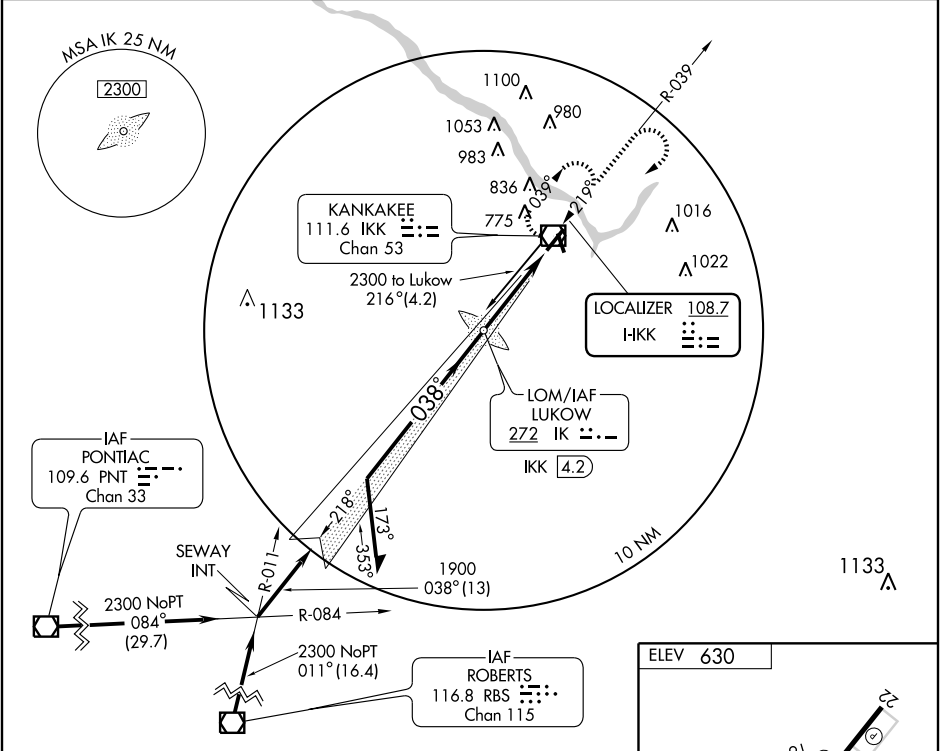
▽ If local altimeter setting not received, use Pontiac altimeter setting and increase and all DAs/MDAs 100 feet.

▲ NA

MALSR

MISSED APPROACH: Climb to 2700 via IKK R-039 then right turn direct IKK VOR/DME and hold.

AWOS-3 111.6	CHICAGO CENTER 132.5 258.1	KANKAKEE RADIO 122.2 255.4	CTAF 123.0 0
------------------------	--------------------------------------	--------------------------------------	-------------------------------



CATEGORY	A	B	C	D
S-ILS 4	825-1/2 200 (200-1/2)			
S-LOC 4	1060-1/2	435 (500-1/2)	1060-3/4 435 (500-3/4)	1060-1 435 (500-1)
CIRCLING	1080-1 450 (500-1)	1100-1 470 (500-1)	1100-1 1/2 470 (500-1 1/2)	1180-2 550 (600-2)

FAF to MAP 3.6 NM					
Knots	60	90	120	150	180
Min:Sec	3:36	2:24	1:48	1:26	1:12

KANKAKEE, ILLINOIS
Amdt 6A 07074

KANKAKEE/GREATER KANKAKEE (IKK)
ILS or LOC RWY 4

41° 04' N - 87° 51' W

EC-3, 22 OCT 2009 to 19 NOV 2009

EC-3, 22 OCT 2009 to 19 NOV 2009