

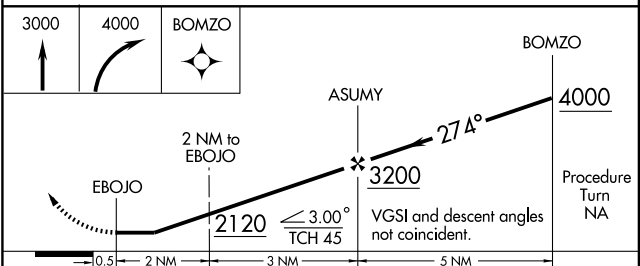
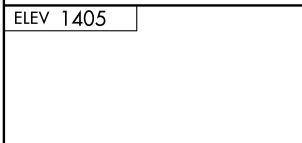
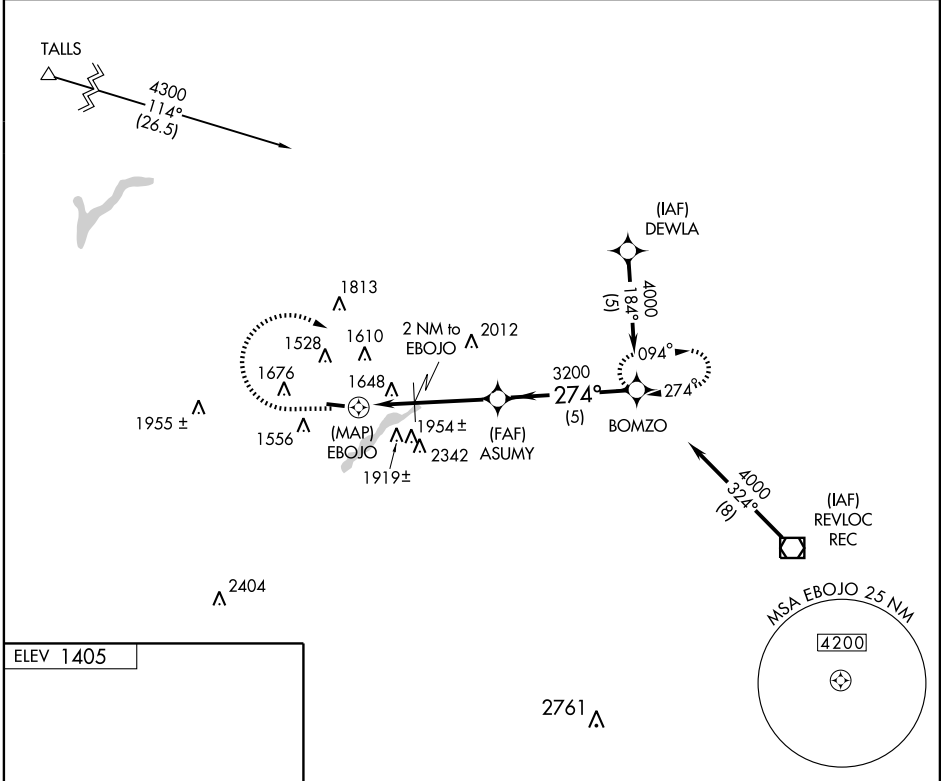
GPS RWY 28

INDIANA COUNTY/JIMMY STEWART FIELD (IDI)

APP CRS 274°	Rwy Idg 4000
	TDZE 1405
	Apt Elev 1405

MISSED APPROACH: Climb to 3000, then climbing right turn to 4000 direct BOMZO WP and hold.

AWOS-3 126.625	CLEVELAND CENTER 121.2 299.2	UNICOM 122.8 (CTAF)
--------------------------	--	-------------------------------



CATEGORY	A	B	C	D
S-28	1940-1	535 (600-1)	1940-1½ 535 (600-1½)	1940-1¾ 535 (600-1¾)
CIRCLING	1960-1 555 (600-1)	1980-1 575 (600-1)	2100-2 695 (700-2)	2220-2¾ 815 (900-2¾)

MIRL Rwy 10-28
REIL Rwy 10 and 28

GPS RWY 28

NE-4, 22 OCT 2009 to 19 NOV 2009

NE-4, 22 OCT 2009 to 19 NOV 2009