

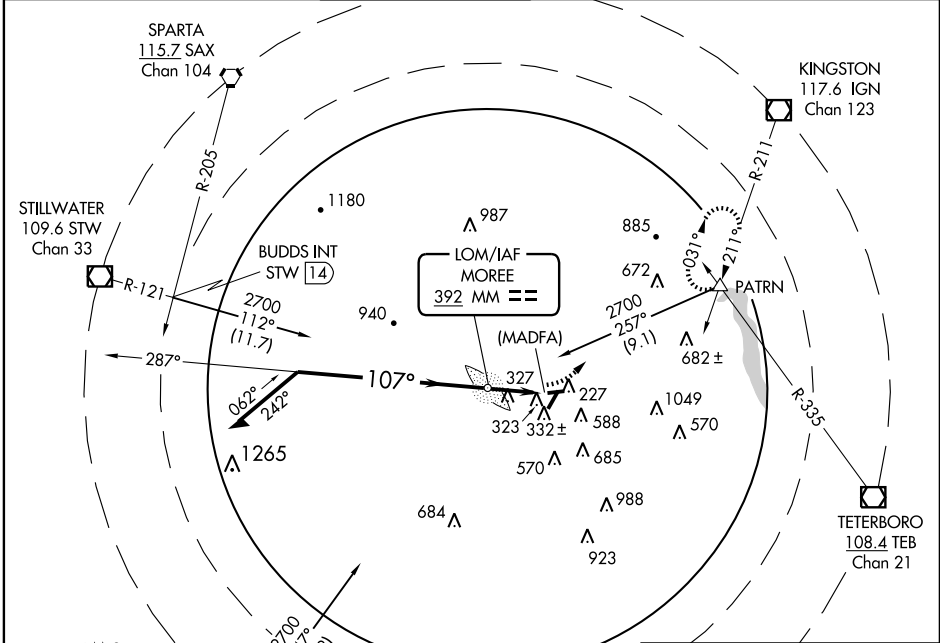
NDB or GPS-A
CALDWELL / ESSEX COUNTY (CDW)

LOM MM 392	APP CRS 107°	Rwy Idg TDZE Apt Elev	N/A N/A 173
----------------------	------------------------	-----------------------------	--

▽
▲ NA

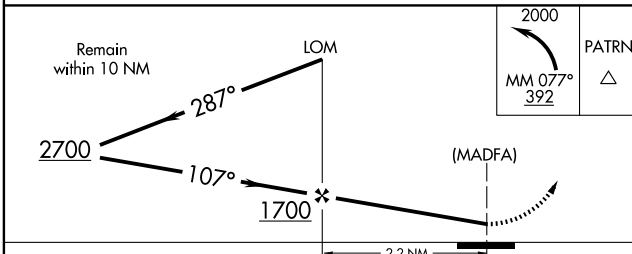
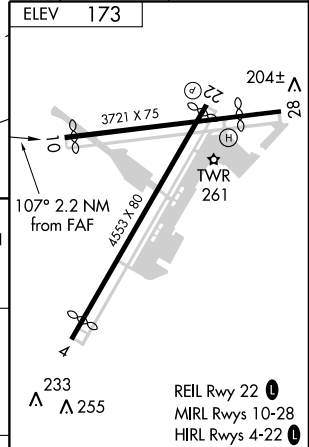
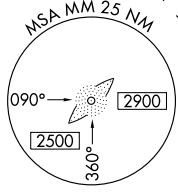
MISSED APPROACH: Climbing left turn to 2000 via 077° bearing from MM LOM to PATRN Int and hold.

ATIS 135.5	NEW YORK APP CON 127.6 379.9	CALDWELL TOWER ★ 119.8 (CTAF) 0	GND CON 121.9	CLNC DEL 121.1	UNICOM 122.95
----------------------	--	--	-------------------------	--------------------------	-------------------------



NE-2, 22 OCT 2009 to 19 NOV 2009

NE-2, 22 OCT 2009 to 19 NOV 2009



CATEGORY	A	B	C	D	FAF to MAP 2.2 NM					
CIRCLING	940-1	980-1¼	980-2¼	1080-3	Knots	60	90	120	150	180
	767 (800-1)	807 (900-1¼)	807 (900-2¼)	907 (1000-3)	Min:Sec	2:12	1:28	1:06	0:53	0:44