

LOC RWY 22

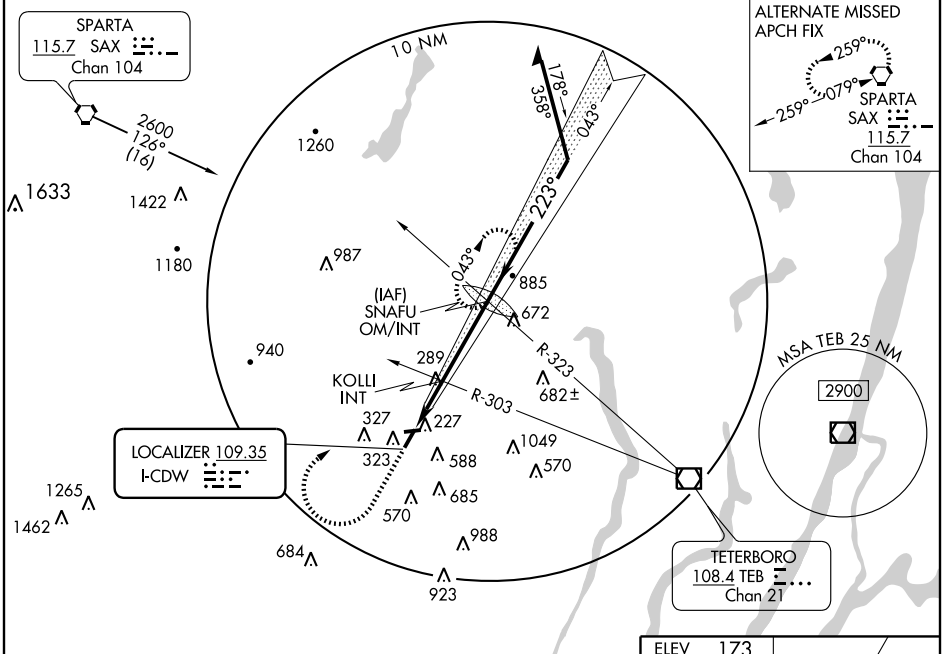
CALDWELL / ESSEX COUNTY (CDW)

LOC I-CDW 109.35	APP CRS 223°	Rwy Idg 4418
		TDZE 173
		Apt Elev 173

When local altimeter setting not received, use Newark altimeter setting and increase all MDA 60 feet. Increase S-22 Cat B, C and D and Circling Cat C visibility ¼ mile; and, for KOLLI INT minimums increase S-22 Cat C and D visibility ¼ mile, and Circling Cat C visibility ½ mile. Visibility reduction by helicopters NA.

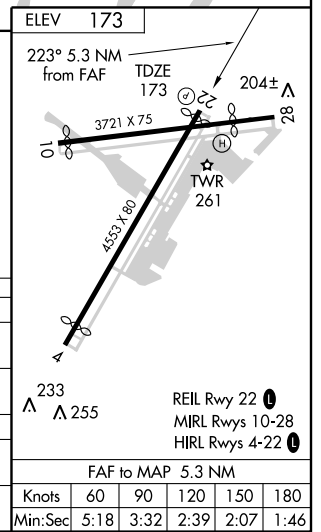
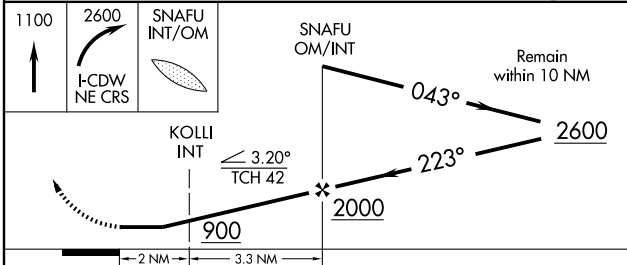
MISSED APPROACH: Climb to 1100 then climbing right turn to 2600 via I-CDW NE course to SNAFU OM/INT and hold, continue climb-in-hold to 2600.

ATIS 135.5	NEW YORK APP CON 127.6 379.9	CALDWELL TOWER ★ 119.8 (CTAF) 0	GND CON 121.9	CLNC DEL 121.1	UNICOM 122.95
----------------------	--	---	-------------------------	--------------------------	-------------------------



NE-2, 22 OCT 2009 to 19 NOV 2009

NE-2, 22 OCT 2009 to 19 NOV 2009



CATEGORY	A	B	C	D
S-22	900-1 727 (800-1)		900-2 727 (800-2)	900-2½ 727 (800-2½)
CIRCLING	940-1 767 (800-1)	980-1¼ 807 (900-1¼)	1020-2½ 847 (900-2½)	1080-3 907 (1000-3)
KOLLI INT MINIMUMS				
S-22	540-1 367 (400-1)		540-1¼ 367 (400-1¼)	
CIRCLING	940-1 767 (800-1)	980-1¼ 807 (900-1¼)	1020-2½ 847 (900-2½)	1080-3 907 (1000-3)

ELEV	173
223° 5.3 NM from FAF	TDZE 173
3721 X 75	204±
4531 X 80	28
TWR	261
REIL Rwy 22	0
MIRL Rwys 10-28	0
HIRL Rwys 4-22	0
FAF to MAP 5.3 NM	
Knots	60 90 120 150 180
Min:Sec	5:18 3:32 2:39 2:07 1:46