

SINTON, TEXAS

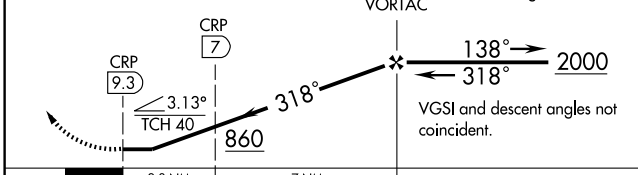
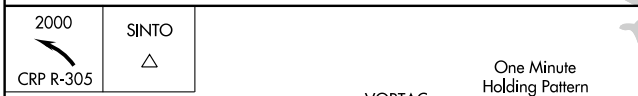
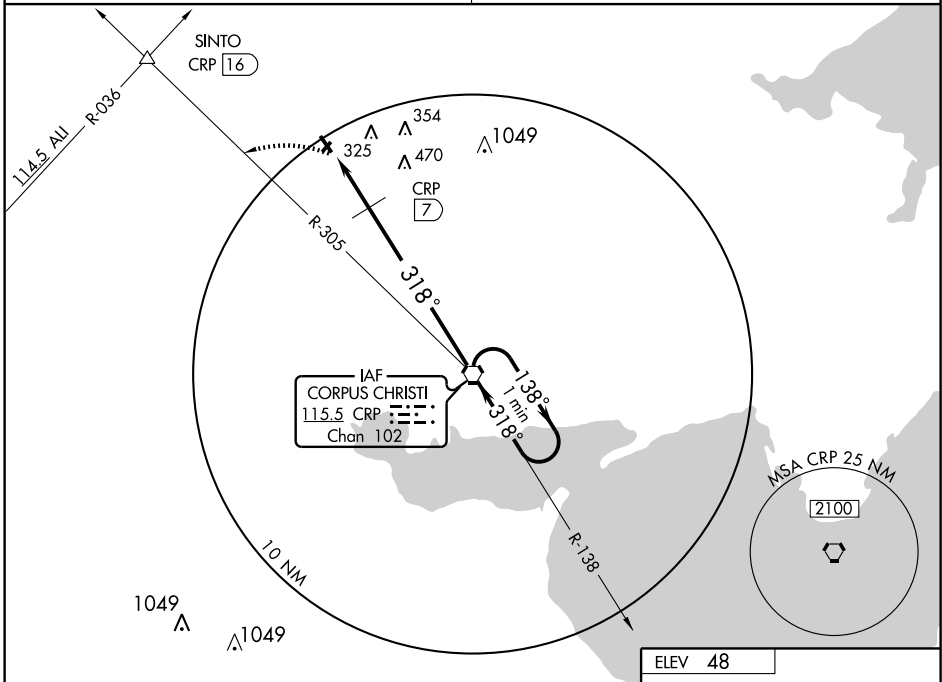
AL-5274 (FAA)

VOR RWY 32

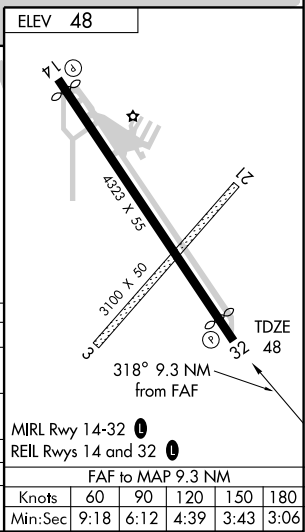
SINTON/ALFRED C 'BUBBA' THOMAS (T69)

VORTAC CRP 115.5 Chan 102	APP CRS 318°	Rwy Idg 3995 TDZE 48 Apt Elev 48
---	------------------------	---

<p>▼ Use Corpus Christi Intl altimeter setting.</p> <p>▲ NA</p>	<p>MISSED APPROACH: Climbing left turn to 2000 via CRP R-305 to SINTO Int.</p>
<p>CORPUS APP CON 120.9 348.725</p>	<p>UNICOM 122.8 (CTAF) 0</p>



CATEGORY	A	B	C	D
S-32	860-1 812 (900-1)	860-1 1/4 812 (900-1 1/4)		NA
CIRCLING	860-1 812 (900-1)	860-1 1/4 812 (900-1 1/4)		NA
DME MINIMUMS				
S-32	640-1	592 (600-1)		NA
CIRCLING	640-1 592 (600-1)	680-1 632 (700-1)		NA



MIRL Rwy 14-32 0					
REIL Rwys 14 and 32 0					
FAF to MAP 9.3 NM					
Knots	60	90	120	150	180
Min:Sec	9:18	6:12	4:39	3:43	3:06

SINTON, TEXAS
Amdt 8B 09015

28°02' N-97°33' W

SINTON/ALFRED C 'BUBBA' THOMAS (T69)

VOR RWY 32

SC-3, 22 OCT 2009 to 19 NOV 2009

SC-3, 22 OCT 2009 to 19 NOV 2009