

LOC RWY 8

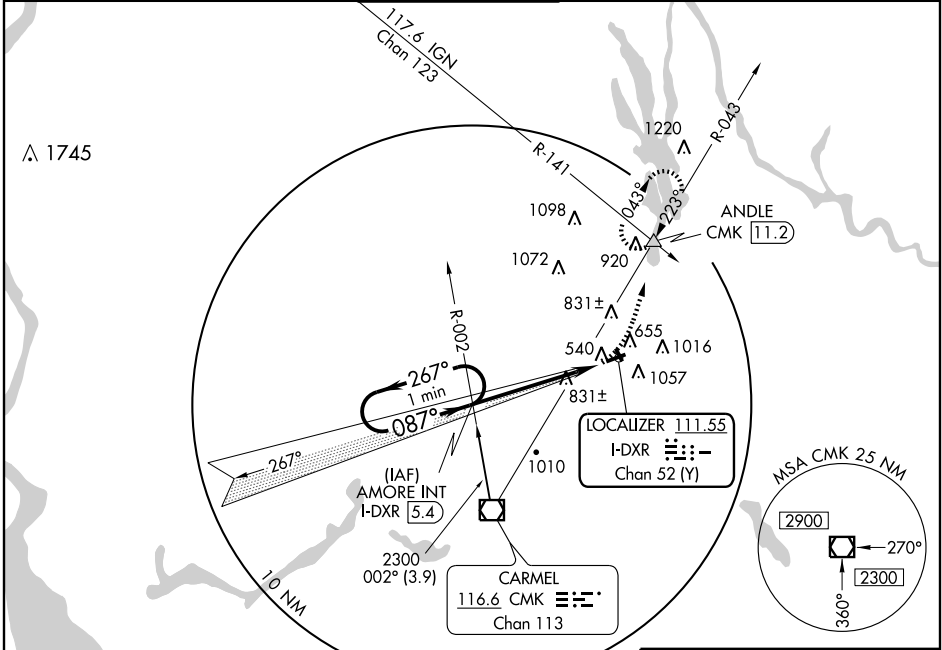
DANBURY MUNI (DXR)

LOC/DME I-DXR 111.55 Chan 52 (Y)	APP CRS 087°	Rwy Idg TDZE 457 Apt Elev 458	4054
--	------------------------	---	-------------

⚠ Circling NA south of Rwy 8-26.
⚠ If local altimeter setting not received, use Waterbury-Oxford altimeter setting and increase all MDAs 80 feet.

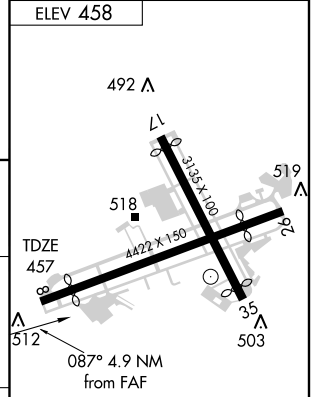
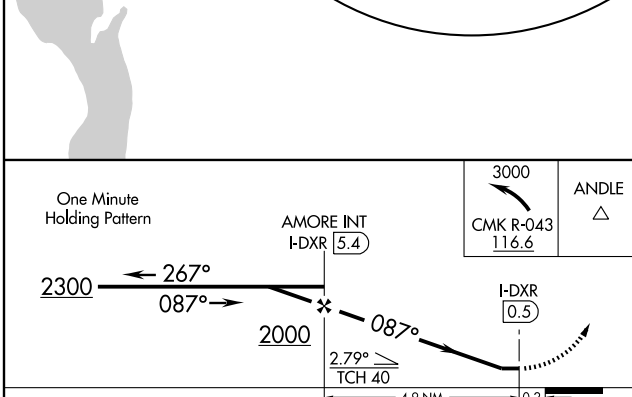
MISSED APPROACH: Climbing left turn to 3000 via CMK R-043 to ANDLE Int/CMK 11.2 DME and hold, continue climb-in-hold to 3000.

ATIS 127.75	NEW YORK APP CON 126.4 257.65	DANBURY TOWER * 119.4 0 (CTAF)	GND CON 121.6	CLNC DEL 128.6	UNICOM 122.95
-----------------------	---	--	-------------------------	--------------------------	-------------------------



NE-1, 22 OCT 2009 to 19 NOV 2009

NE-1, 22 OCT 2009 to 19 NOV 2009



CATEGORY	A	B	C	D
S-8	1100-1	643 (700-1)	1100-1¼ 643 (700-1¼)	1100-2 643 (700-2)
CIRCLING	1140-1	682 (700-1)	1 220-2¼ 762 (800-2¼)	1 220-2½ 762 (800-2½)

REIL Rwy 8 and 26					
MIRL Rwy 8-26					
FAF to MAP 4.9 NM					
Knots	60	90	120	150	180
Min:Sec	4:54	3:16	2:27	1:58	1:38