

DEL RIO, TEXAS

AL-5268 (FAA)

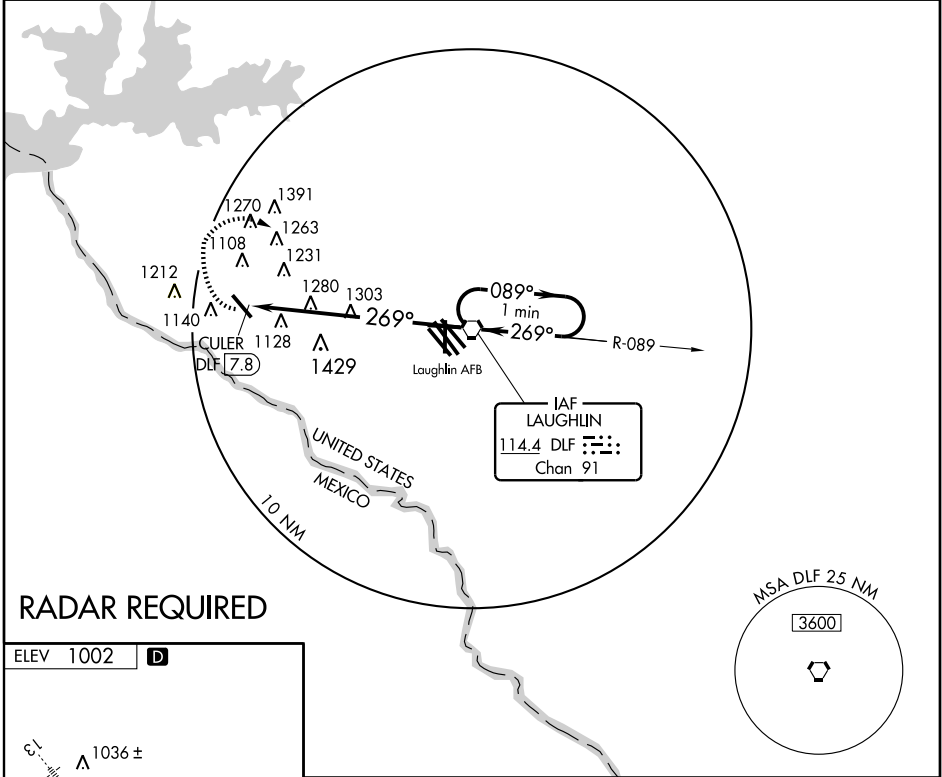
VORTAC DLF 114.4 Chan 91	APP CRS 269°	Rwy Idg TDZE Apt Elev	N/A N/A 1002
--	------------------------	-----------------------------	---------------------------

VOR-A
DEL RIO INTL (DRT)

▼ Circling NA for Cat D SW of Rwy 13-31. If local altimeter setting not received, use Laughlin AFB altimeter setting and increase all MDAs 40 feet.

▲ MISSED APPROACH: Climbing right turn to 4000 via heading 340° then right turn direct DLF VORTAC and hold.

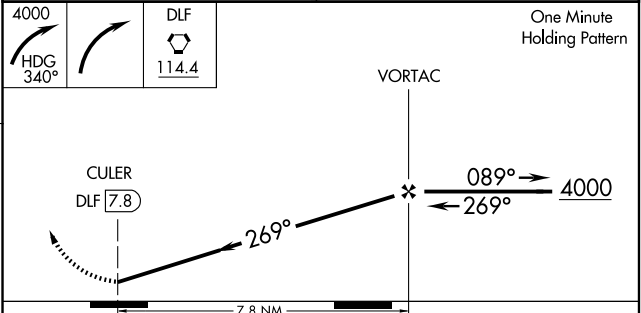
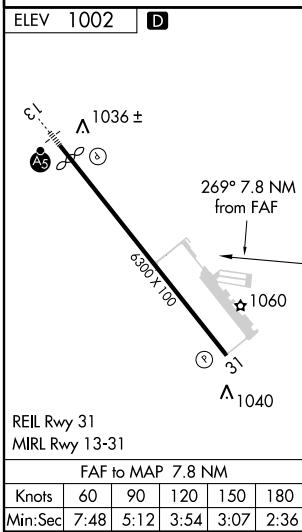
ASOS 118.525	DEL RIO APP CON* 119.6 259.1	CLNC DEL 120.5	UNICOM 122.8 (CTAF) 0
------------------------	--	--------------------------	--



SC-3, 22 OCT 2009 to 19 NOV 2009

SC-3, 22 OCT 2009 to 19 NOV 2009

RADAR REQUIRED



FAF to MAP 7.8 NM		CATEGORY	A	B	C	D
Knots	60 90 120 150 180	CIRCLING	1780-1 778 (800-1)	1780-1¼ 778 (800-1¼)	1780-2¼ 778 (800-2¼)	1780-2½ 778 (800-2½)
Min:Sec	7:48 5:12 3:54 3:07 2:36					

DEL RIO, TEXAS
Amdt 1 09015

29°22' N- 100°56' W

DEL RIO INTL (DRT)
VOR-A