

LOC RWY 13

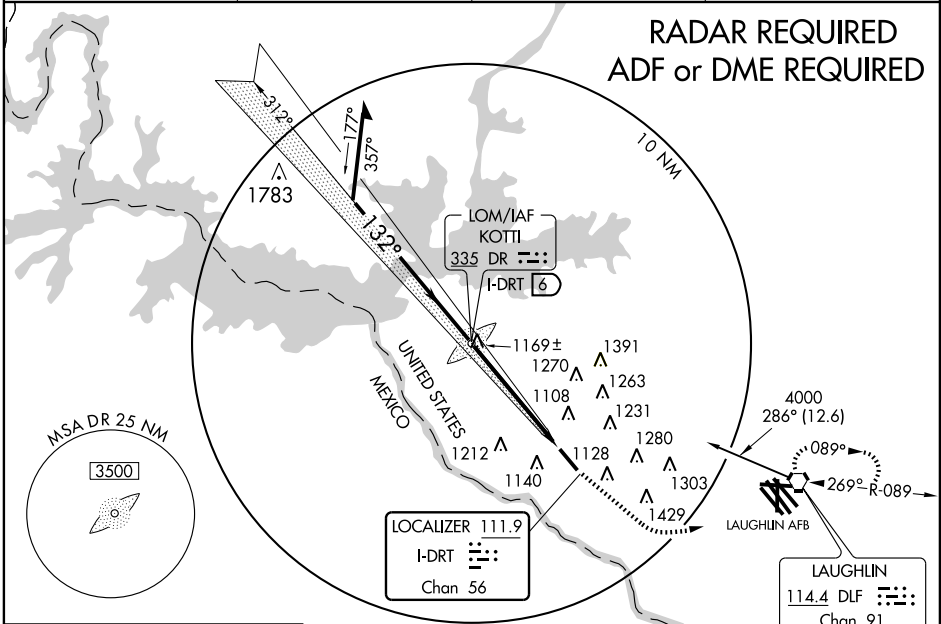
DEL RIO INTL (DRT)

LOC I-DRT 111.9 Chan 56	APP CRS 132°	Rwy Idg TDZE Apt Elev	6000 1002 1002
---	------------------------	-----------------------------	---

⚠ Circling NA for Cat D SW of Rwy 13-31. If local altimeter setting not received, use Laughlin AFB altimeter setting and increase all MDAs 40 feet. VDP NA when using Laughlin AFB altimeter setting. Inoperative table does not apply to S-13 Cat C.

MALSR
⚠ MISSED APPROACH: Climb to 4000 via heading 122° then left turn direct DLF VORTAC and hold.

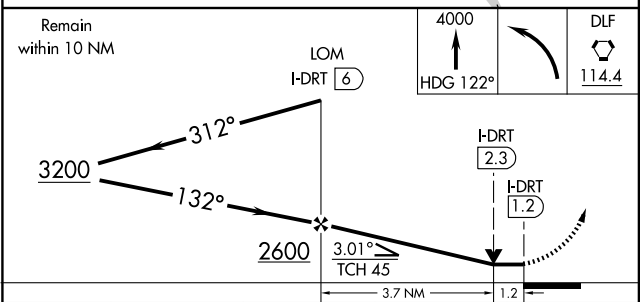
ASOS 118.525	DEL RIO APP CON ★ 119.6 259.1	CLNC DEL 120.5	UNICOM 122.8 (CTAF) 0
------------------------	---	--------------------------	---------------------------------



SC-3, 22 OCT 2009 to 19 NOV 2009

SC-3, 22 OCT 2009 to 19 NOV 2009

ELEV 1002	D
132° 4.9 NM from FAF	TDZE 1002
1036 ±	1060
REIL Rwy 31	MIRL Rwy 13-31
FAF to MAP 4.9 NM	



Knots	60	90	120	150	180
Min:Sec	4:54	3:16	2:27	1:58	1:38

CATEGORY	A	B	C	D
S-13	1420-¾	418 (500-¾)	1420-1¼	418 (500-1¼)
CIRCLING	1440-1 438 (500-1)	1460-1 458 (500-1)	1560-1½ 558 (600-1½)	1640-2 638 (700-2)