

AUBURN, INDIANA

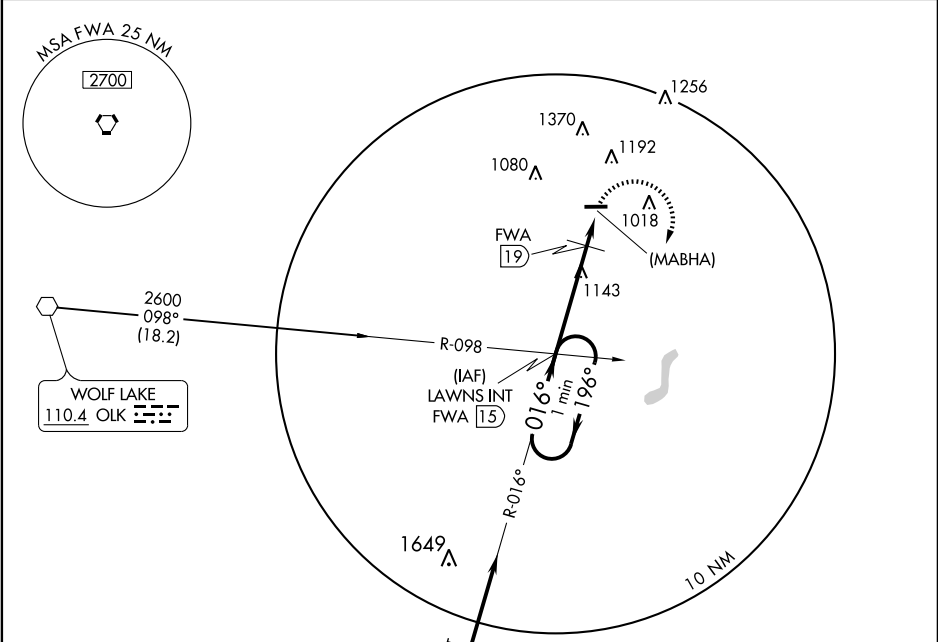
AL-5266 (FAA)

VORTAC FWA <b>117.8</b> Chan 125	APP CRS <b>016°</b>	Rwy Idg TDZE Apt Elev <b>N/A</b> <b>N/A</b> <b>881</b>
--	------------------------	---

VOR or GPS-A  
AUBURN / DE KALB COUNTY (GWB)

<b>▼</b> <b>▲</b> NA	Use Fort Wayne altimeter setting.	MISSED APPROACH: Climbing right turn to 2600 via FWA R-016 to LAWNS Int and hold.
-------------------------	-----------------------------------	---

AWOS-3 <b>124.15</b>	FORT WAYNE APP CON <b>127.2 284.6</b>	CLNC DEL <b>126.6</b>	UNICOM <b>123.0 (CTAF)</b>
-------------------------	--	--------------------------	-------------------------------

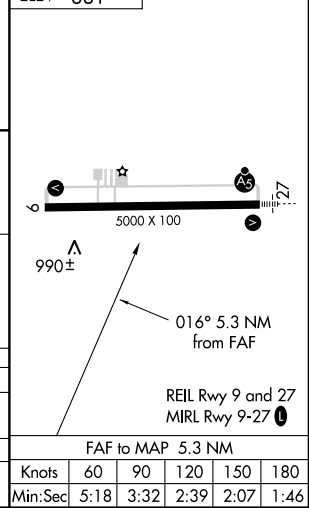
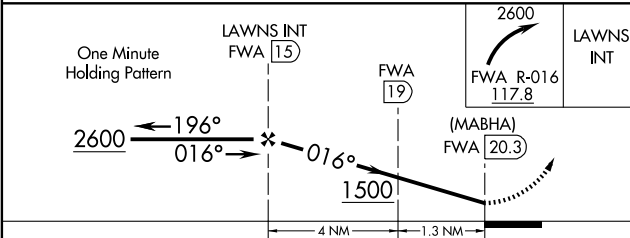


EC-2, 22 OCT 2009 to 19 NOV 2009

EC-2, 22 OCT 2009 to 19 NOV 2009

IAF  
FORT WAYNE  
117.8 FWA  
Chan 125

ELEV 881



CATEGORY	A	B	C	D
CIRCLING	1500-1 619 (700-1)	1500-1¼ 619 (700-1¼)	1600-2 719 (800-2)	1600-2¼ 719 (800-2¼)
DME MINIMUMS				
CIRCLING	1360-1 479 (500-1)	1360-1¼ 479 (500-1¼)	1600-2 719 (800-2)	1600-2¼ 719 (800-2¼)

FAF to MAP 5.3 NM					
Knots	60	90	120	150	180
Min:Sec	5:18	3:32	2:39	2:07	1:46

AUBURN, INDIANA  
Amdt 9 08213

41°18'N - 85°04'W

AUBURN / DE KALB COUNTY (GWB)  
VOR or GPS-A