

VOR RWY 9

AUBURN / DE KALB COUNTY (GWB)

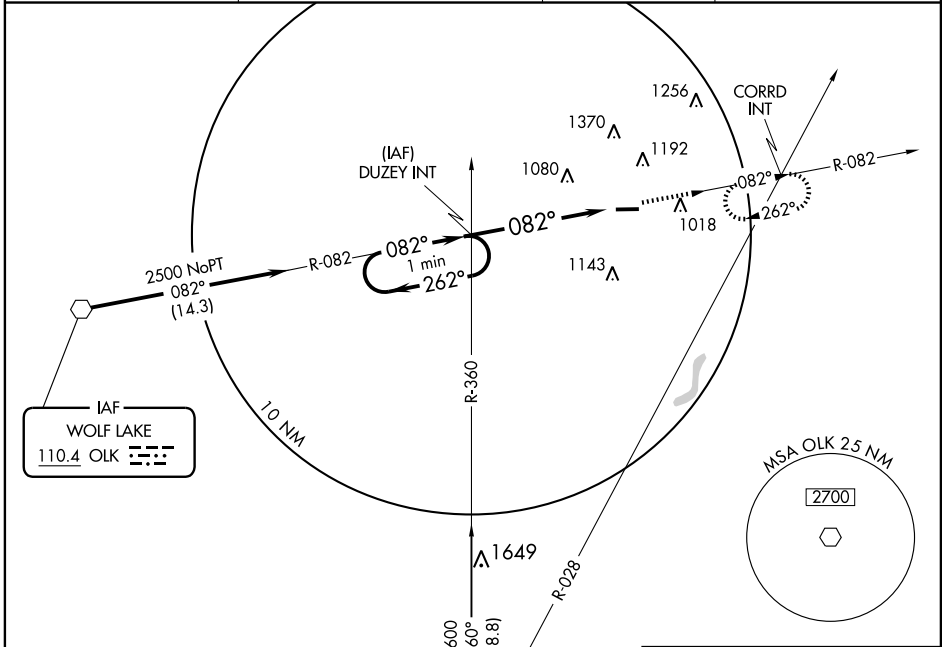
VOR OLK 110.4	APP CRS 082°	Rwy Idg TDZE Apt Elev	5000 881 881
-------------------------	------------------------	-----------------------------	---

▽ Use Fort Wayne altimeter setting.

▲ NA

MISSED APPROACH: Climb to 2500 via OLK R-082 to CORR INT and hold.

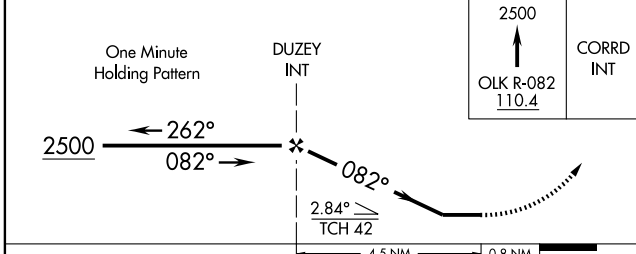
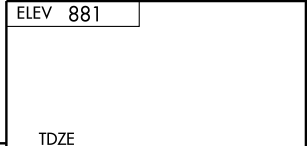
AWOS-3 124.15	FORT WAYNE APP CON 127.2 284.6	CLNC DEL 126.6	UNICOM 123.0 (CTAF)
-------------------------	--	--------------------------	-------------------------------



EC-2, 22 OCT 2009 to 19 NOV 2009

EC-2, 22 OCT 2009 to 19 NOV 2009

FORT WAYNE
117.8 FWA
Chan 125



CATEGORY	A	B	C	D
S-9	1360-1 479 (500-1)		1360-1¼ 479 (500-1¼)	1360-1½ 479 (500-1½)
CIRCLING	1360-1 479 (500-1)		1600-2 719 (800-2)	1600-2¼ 719 (800-2¼)

ELEV 881

TDZE 881

5000 X 100

082° 5.3 NM from FAF

REIL Rwy 9 and 27
MIRL Rwy 9-27

FAF to MAP 4.5 NM

Knots	60	90	120	150	180
Min:Sec	4:30	3:00	2:15	1:48	1:30

VOR RWY 9