

WAAS CH <b>40201</b> <b>W09A</b>	APP CRS <b>094°</b>	Rwy Idg <b>5000</b> TDZE <b>880</b> Apt Elev <b>880</b>
--	------------------------	---

# RNAV (GPS) RWY 9

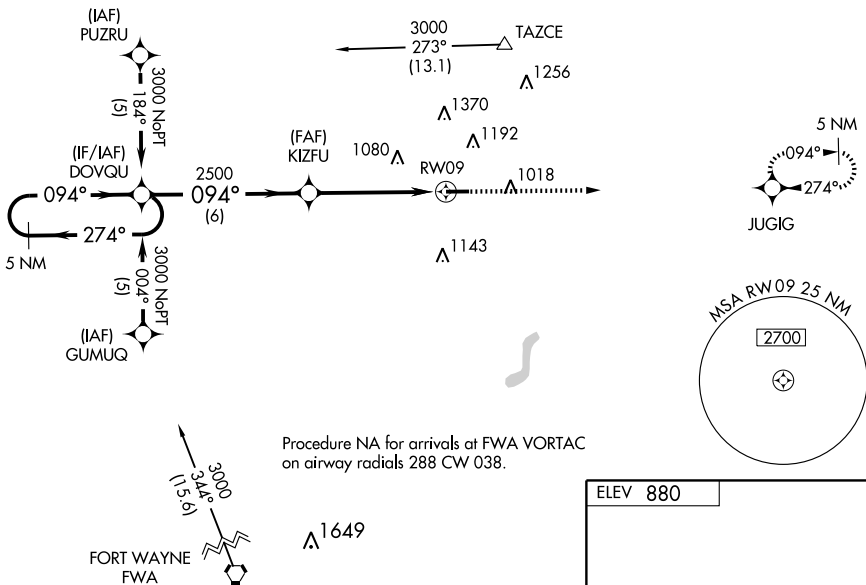
AUBURN / DE KALB COUNTY (GWB)

**NA** If local altimeter setting at received, use Fort Wayne Intl altimeter setting and increase all DAs/MDAs 60 feet. Baro-VNAV NA when using Fort Wayne Intl altimeter setting. For uncompensated Baro-VNAV systems, LNAV/VNAV NA below -16°C (4°F) or above 47°C (116°F). Visibility reductions by helicopters NA. DME/DME RNP-0.3 NA.

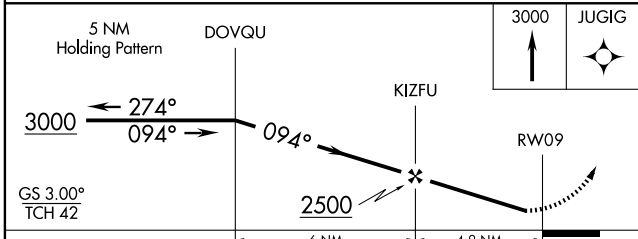
**MISSED APPROACH:**  
Climb to 3000 direct  
JUGIG and hold.

AWOS-3 <b>124.15</b>	FORT WAYNE APP CON <b>127.2 284.6</b>	CLNC DEL <b>126.6</b>	UNICOM <b>123.0 (CTAF) 0</b>
-------------------------	--	--------------------------	---------------------------------

EC-2, 22 OCT 2009 to 19 NOV 2009



EC-2, 22 OCT 2009 to 19 NOV 2009



ELEV 880
----------

CATEGORY	A	B	C	D
LPV DA		1182-1	302 (400-1)	
LNAV/VNAV DA		1237-1 ¼	357 (400-1 ¼)	
LNAV MDA		1220-1	340 (400-1)	
CIRCLING	1280-1 400 (400-1)	1340-1 460 (500-1)	1560-2 680 (700-2)	1560-2 ¼ 680 (700-2 ¼)