

WAAS CH <b>86401</b> <b>W27A</b>	APP CRS <b>274°</b>	Rwy Idg <b>5000</b> TDZE <b>880</b> Apt Elev <b>880</b>
--	------------------------	---

# RNAV (GPS) RWY 27

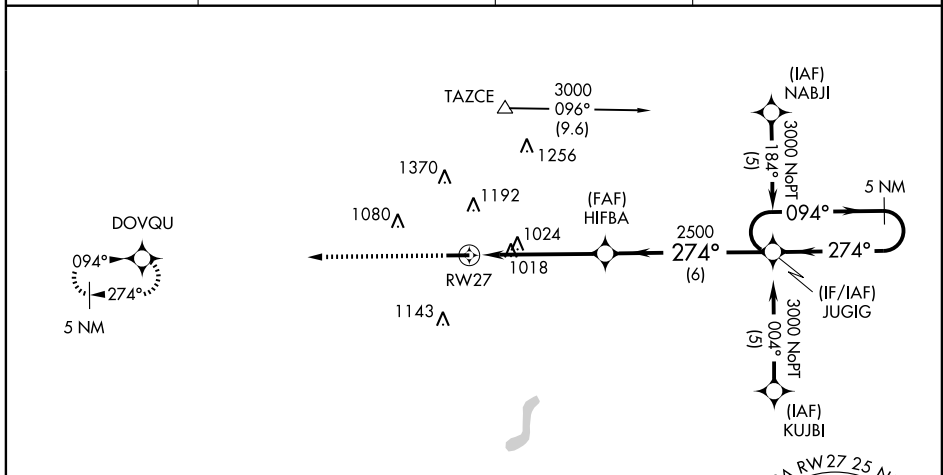
AUBURN / DE KALB COUNTY (GWB)

**NA** If local altimeter setting not received, use Fort Wayne Intl altimeter setting and increase LPV DA 60 feet, LNAV/VNAV DA 180 feet, and all MDAs 60 feet. VDP and Baro-VNAV NA when using Fort Wayne Intl altimeter setting. For uncompensated Baro-VNAV systems, LNAV/VNAV NA below -16°C (4°F) or above 47°C (116°F). For inoperative MALSR, increase LNAV Cats A, B and C visibility to 1, and Cat D visibility to 1¼. Inoperative table does not apply to LPV. DME/DME RNP-0.3 NA.

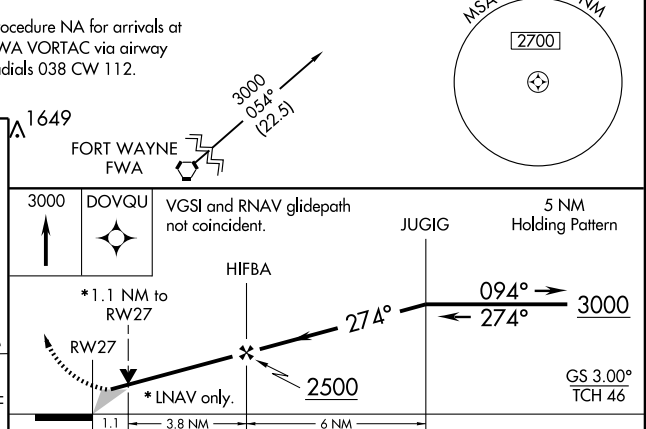
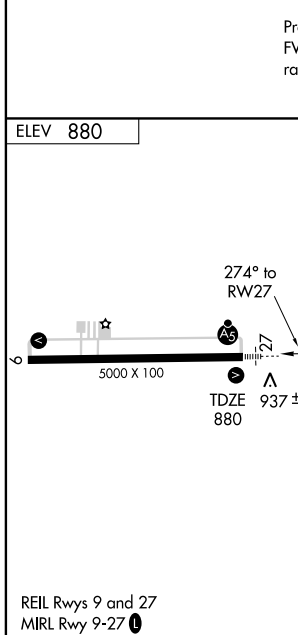
MALSR

MISSED APPROACH:  
Climb to 3000 direct DOVQU and hold.

AWOS-3 <b>124.15</b>	FORT WAYNE APP CON <b>127.2 284.6</b>	CLNC DEL <b>126.6</b>	UNICOM <b>123.0 (CTAF) 0</b>
-------------------------	--	--------------------------	---------------------------------



Procedure NA for arrivals at FWA VORTAC via airway radials 038 CW 112.



CATEGORY	A	B	C	D
LPV DA		1130-¾	250 (300-¾)	
LNAV/VNAV DA		1207-¾	327 (400-¾)	
LNAV MDA		1280-¾	400 (400-¾)	1280-1 400 (400-1)
CIRCLING	1280-1 400 (400-1)	1340-1 460 (500-1)	1560-2 680 (700-2)	1560-2 ¼ 680 (700-2 ¼)

EC-2, 22 OCT 2009 to 19 NOV 2009

EC-2, 22 OCT 2009 to 19 NOV 2009