

LOC DME I-GWB <b>108.75</b> Chan 24 (Y)	APP CRS <b>274°</b>	Rwy Idg <b>5000</b> TDZE <b>880</b> Apt Elev <b>880</b>
---	------------------------	---

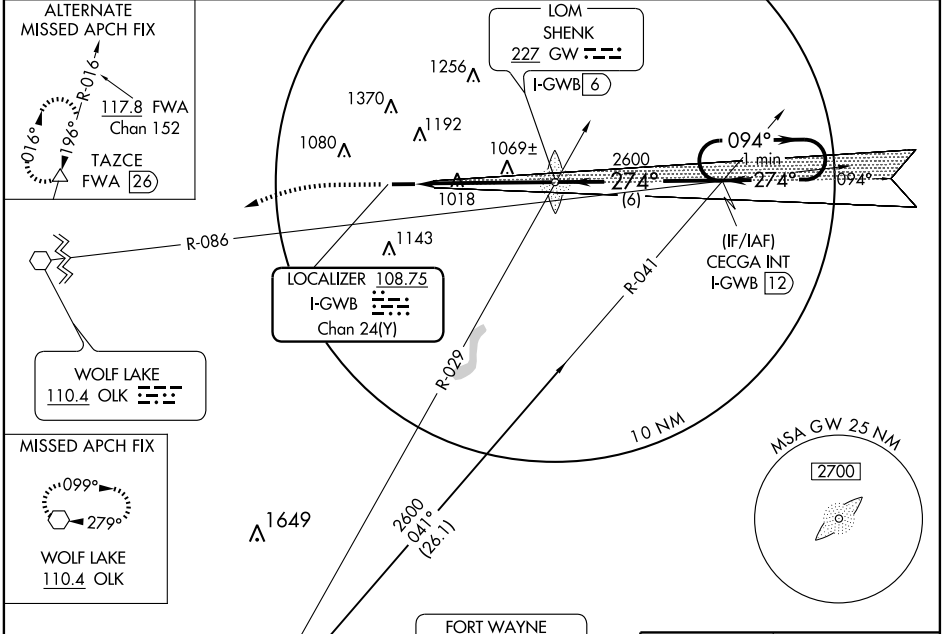
# ILS or LOC RWY 27

AUBURN / DE KALB COUNTY (GWB)

**NA** When local altimeter setting not received, use Fort Wayne Intl altimeter setting and increase all DAs/MDAs 60 feet. For inoperative MALSR, when using Fort Wayne Intl altimeter setting increase S-ILS 27 all Cats visibility to 1. VDP NA when using Fort Wayne Intl altimeter setting.

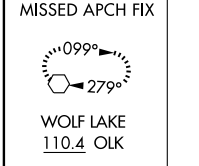
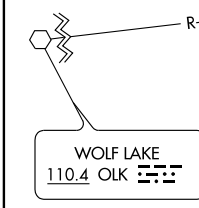
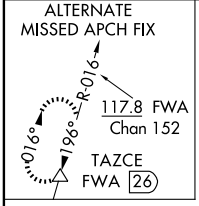
**MALSR** MISSED APPROACH: Climb to 1400 then climbing left turn to 3000 direct OLK VOR and hold.

AWOS-3 <b>124.15</b>	FORT WAYNE APP CON <b>127.2 284.6</b>	CLNC DEL <b>126.6</b>	UNICOM <b>123.0 (CTAF) 0</b>
-------------------------	--	--------------------------	---------------------------------



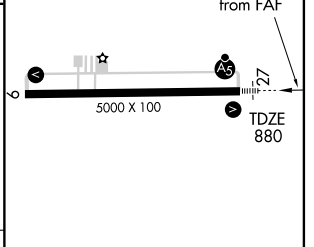
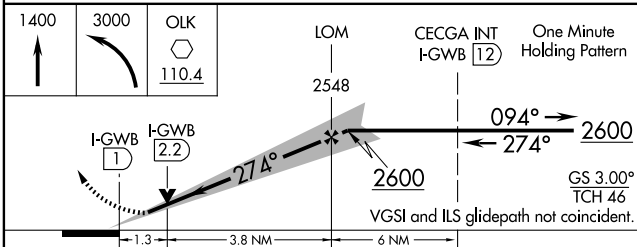
EC-2, 22 OCT 2009 to 19 NOV 2009

EC-2, 22 OCT 2009 to 19 NOV 2009



FWA VORTAC R-041 and OLK VOR R-086 should be used to identify CECGA intersection.

**FORT WAYNE 117.8 FWA** Chan 125



CATEGORY	A	B	C	D
S-ILS 27	1080-½		200 (200-½)	
S-LOC 27	1320-½	440 (500-½)	1320-¾ 440 (500-¾)	1320-1 440 (500-1)
CIRCLING	1320-1 440 (500-1)	1340-1 460 (500-1)	1560-2 680 (700-2)	1560-2¼ 680 (700-2¼)

REIL Rwy 9 and 27  
MIRL Rwy 9-27 0

FAF to MAP 5 NM

Knots	60	90	120	150	180
Min:Sec	5:00	3:20	2:30	2:00	1:40