


RNAV (GPS) RWY 23

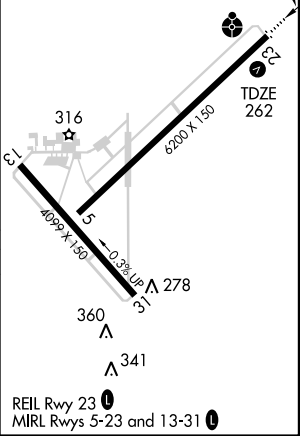
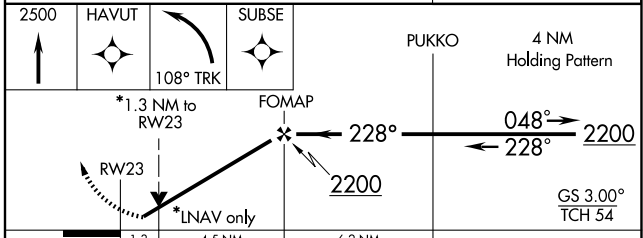
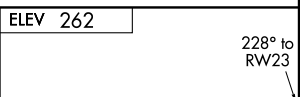
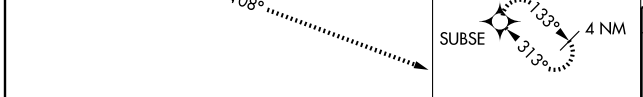
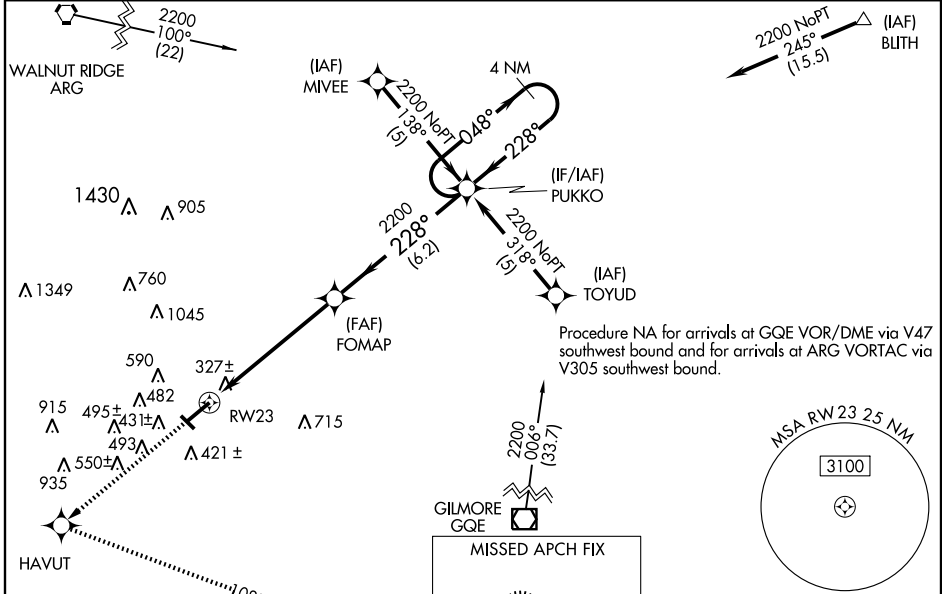
JONESBORO MUNI (JBR)

WAAS Chan 65806 W23A	APP CRS 228°	Rwy Idg TDZE 262 Apt Elev 262	6200
--	------------------------	---	-------------

▼ Inoperative table does not apply to LNAV Cat C. Circling NA north of Rwy 5-23.
▲ BARO-VNAV NA when using Walnut Ridge altimeter setting. For uncompensated BARO-VNAV systems, LNAV/VNAV NA below -1.5°C (5°F) or above 48°C (118°F).
 DME/DME RNP-0.3 NA. Visibility reduction by helicopters NA. VDP NA when using Walnut Ridge altimeter setting. When local altimeter setting not received, use Walnut Ridge altimeter setting, increase all DAs 54 feet and all MDAs 60 feet. Increase LPV visibility ¼ mile all Cats and LNAV visibility Cats C and D ¼ mile.

ODALS

MISSED APPROACH: Climb to 2500 direct HAVUT and left turn via 108° track to SUBSE and hold.

ASOS 118.525	MEMPHIS CENTER 120.075 289.4	UNICOM 123.0	CTAF 123.6
------------------------	--	------------------------	----------------------



CATEGORY	A	B	C	D
LPV DA	545-1 283 (300-1)			
LNAV/VNAV DA	593-1¼ 331 (400-1¼)			
LNAV MDA	720-¾ 458 (500-¾)	720-1¼ 458 (500-1¼)	720-1½ 458 (500-1½)	
CIRCLING	760-1 498 (500-1)	760-1½ 498 (500-1½)	820-2 558 (600-2)	

SC-1, 22 OCT 2009 to 19 NOV 2009

SC-1, 22 OCT 2009 to 19 NOV 2009