

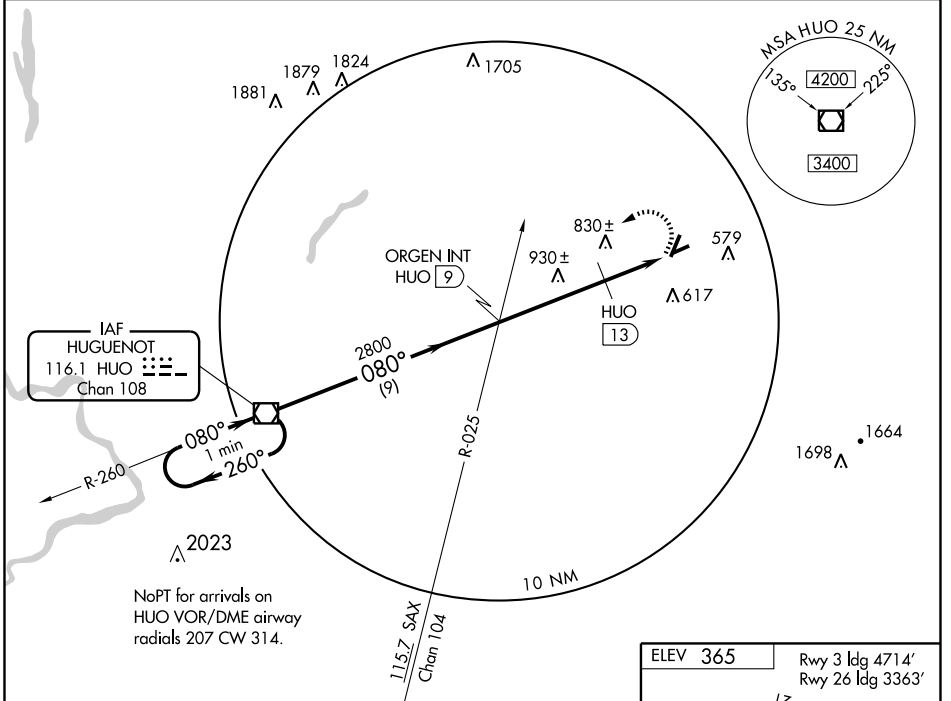
# VOR RWY 8

MONTGOMERY/ORANGE COUNTY (MGJ)

VOR/DME HUO <b>116.1</b> Chan <b>108</b>	APP CRS <b>080°</b>	Rwy ldg <b>3664</b> TDZE <b>360</b> Apt Elev <b>365</b>
--	------------------------	---

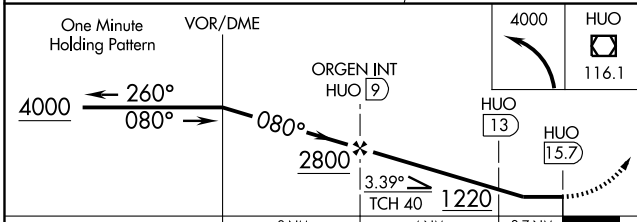
**▽** MISSED APPROACH: Climbing left turn to 4000 direct HUO VOR/DME and hold.

ASOS <b>119.275</b>	NEW YORK APP CON <b>132.75 363.1</b>	CLNC DEL <b>123.85</b>	UNICOM <b>122.725</b> (CTAF) <b>0</b>
------------------------	---	---------------------------	--

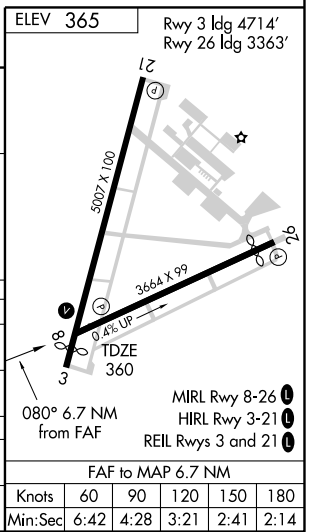


NE-2, 22 OCT 2009 to 19 NOV 2009

NE-2, 22 OCT 2009 to 19 NOV 2009



CATEGORY	A	B	C	D
S-8	1220-1 860 (900-1)	1220-1¼ 860 (900-1¼)	1220-2½ 860 (900-2½)	1220-2¾ 860 (900-2¾)
CIRCLING	1220-1 855 (900-1)	1220-1¼ 855 (900-1¼)	1220-2½ 855 (900-2½)	1220-2¾ 855 (900-2¾)
DME MINIMUMS				
S-8	1160-1 800 (800-1)	1160-1¼ 800 (800-1¼)	1160-2¼ 800 (800-2¼)	1160-2½ 800 (800-2½)
CIRCLING	1200-1 835 (900-1)	1200-1¼ 835 (900-1¼)	1200-2½ 835 900-2½)	1200-2¾ 835 900-2¾)



# VOR RWY 8