

NDB RWY 3

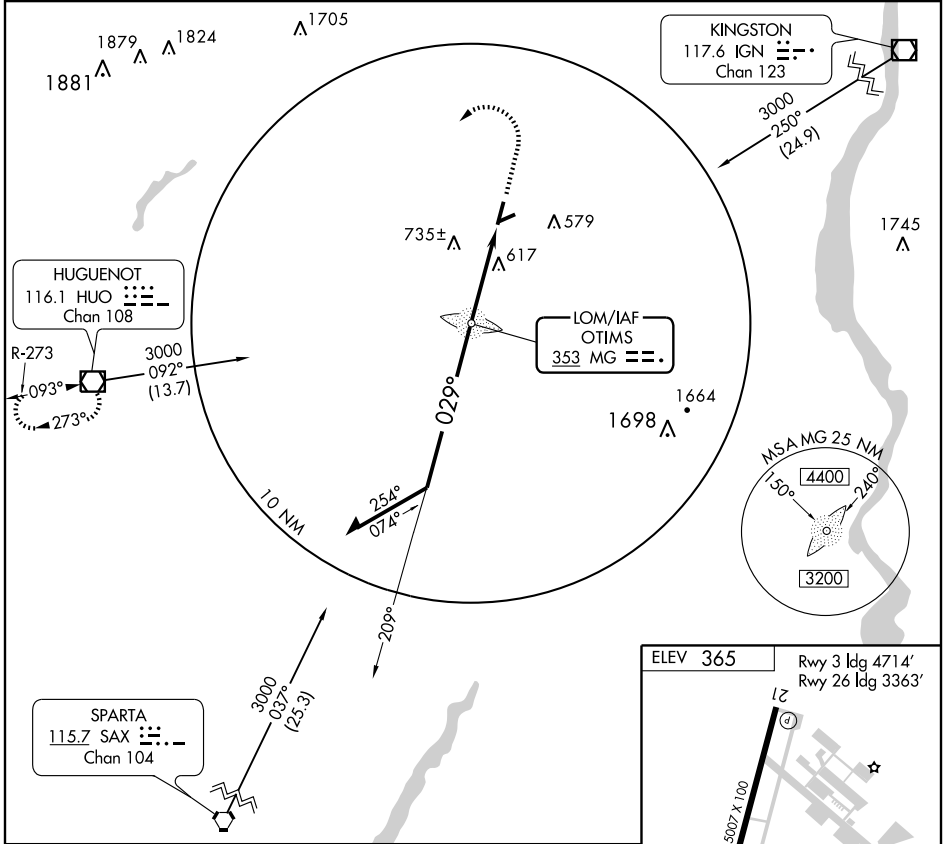
MONTGOMERY/ORANGE COUNTY (MGJ)

LOM MG 353	APP CRS 029°	Rwy ldg TDZE Apt Elev	4714 354 365
----------------------	------------------------	-----------------------------	---

▽
▲ NA

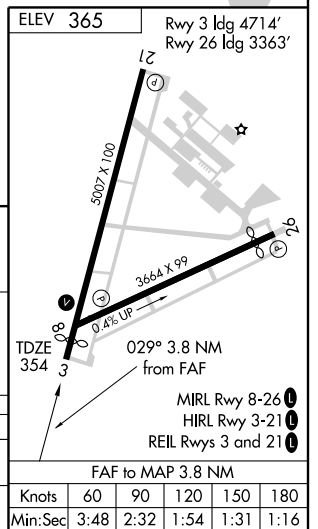
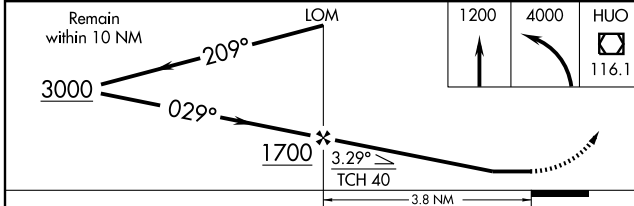
MISSED APPROACH: Climb to 1200, then climbing left turn to 4000 direct HUGO VOR/DME and hold.

ASOS 119.275	NEW YORK APP CON 132.75 363.1	CLNC DEL 123.85	UNICOM 122.725 (CTAF) 0
------------------------	---	---------------------------	--



NE-2, 22 OCT 2009 to 19 NOV 2009

NE-2, 22 OCT 2009 to 19 NOV 2009



CATEGORY	A	B	C	D
S-3	1040-1 835 (900-1)	686 (700-1)	1040-2 686 (700-2)	1040-2 1/4 686 (700-2 1/4)
CIRCLING	1200-1 835 (900-1)	1200-1 1/4 835 (900-1 1/4)	1200-2 1/2 835 (900-2 1/2)	1200-2 3/4 835 (900-2 3/4)

FAF to MAP 3.8 NM					
Knots	60	90	120	150	180
Min:Sec	3:48	2:32	1:54	1:31	1:16

NDB RWY 3